
TOP SCREEN BRACE KIT INSTALLATION INSTRUCTIONS

65757 SERVICE KIT
September 1995

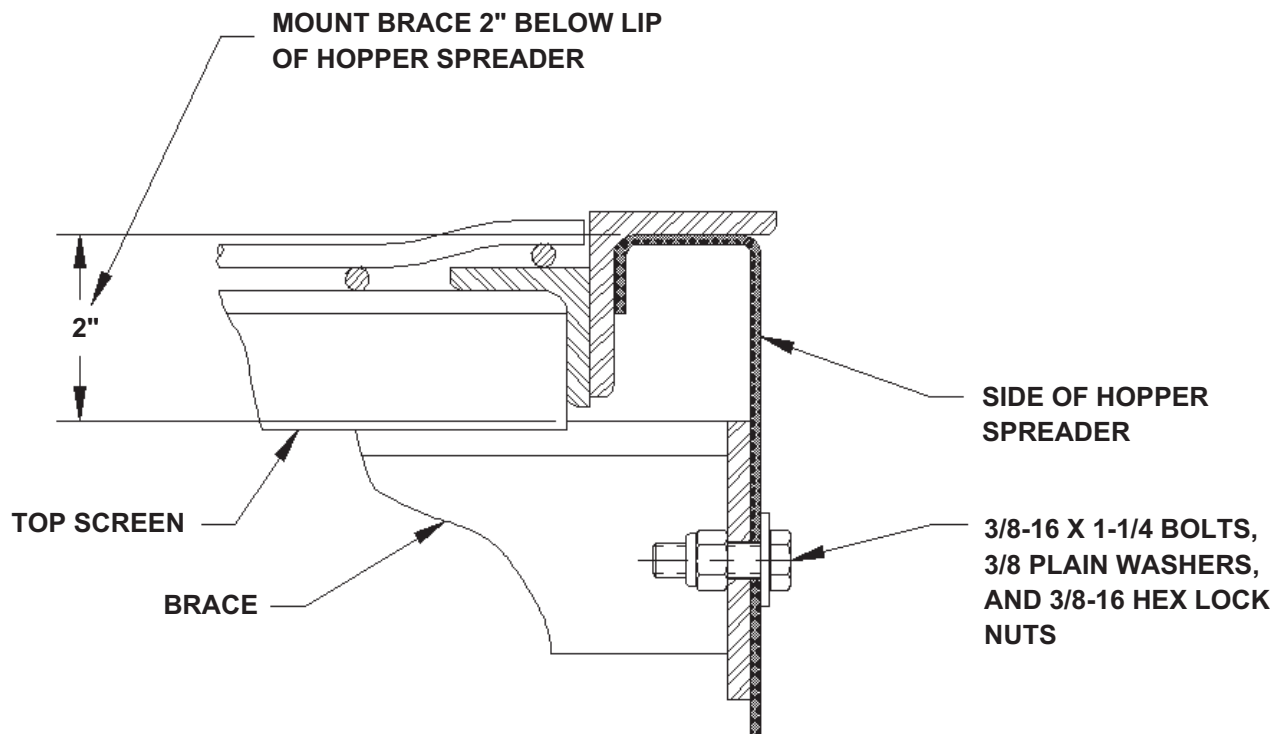
Brace Installation

1. Center brace in hopper spreader two inches below lip as illustrated in diagram shown below.
2. Clamp brace in position.
3. Mark center of four mounting holes on sides of hopper spreader.
4. Remove brace.

5. Drill four $13/32$ " diameter holes through hopper spreader sides at marked locations.

NOTE: An alternate method is to use the mounting holes of brace as pilot holes with brace clamped in position.

6. Secure brace in position with the $3/8$ "-16x1-1/4" bolts, $3/8$ " plain washers, and $3/8$ "-16 hex lock nuts provided in this kit. See diagram below.



Douglas Dynamics reserves the right under its product improvement procedures to change construction or design details and furnish equipment when so altered without reference to illustrations or specifications used herein.