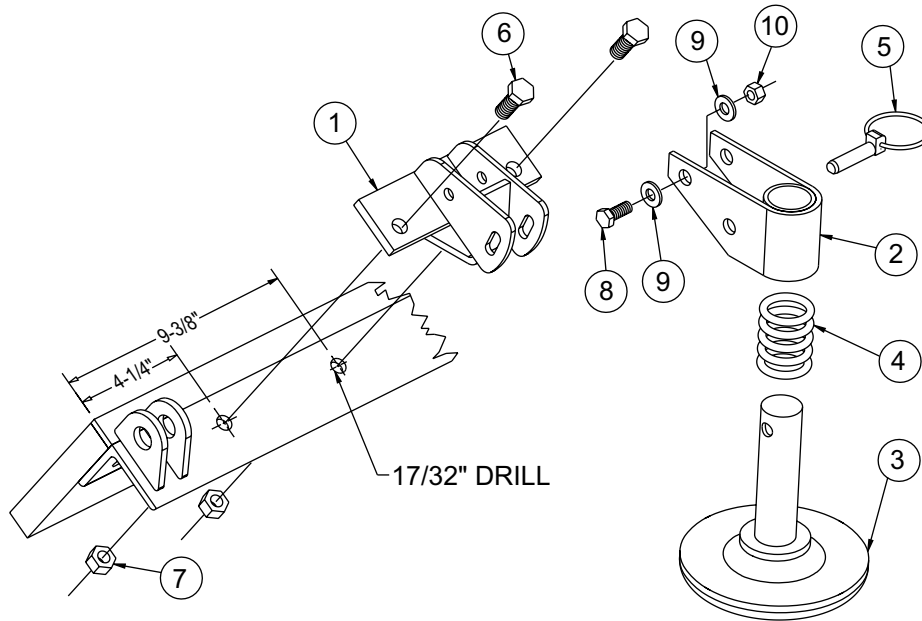




# Shoe Kit for HS Blades



20505 Blade Shoe Kit							
Parts list				26146 – Bolt Bag			
Ref #	Part #	Qty	Description	Ref #	Part #	Qty	Description
1	20507	2	Blade Bracket	6	*90210	4	1/2" -13 x 1-1/2 Gr. 5 Cap Screw
2	20508	2	Shoe Holder	7	*90355	4	1/2" – 13 Lock Nut
3	**26523	2	Shoe Assembly – 6" Solid Cast	8	*90103	8	3/8" – 16 x 1" Gr. 5 Cap Screw
4	*307	10	Shoe Spacer – 1/4" x 1-1/2"	9	*90315	16	3/8" Flat Washer
5	*308K	2	Shoe Pin	10	*90352	8	3/8" – 16 Lock Nut
* Part of 20509 Bolt Bag							
** Consists of (1) shoe, (1) 308K shoe pin, and (5) 307 shoe spacers							

### ⚠ WARNING

**Do not exceed GVWR or GAWR including blade and ballast. The rating label is found on the driver-side vehicle door cornerpost.**

**NOTE: See your FISHER® outlet for application recommendations. Shoe Kit weight information may be found in the Kit Selection Guide.**

## INSTALLATION INSTRUCTIONS

1. Position a blade bracket on the top of the "T" angle with the bent stiffener of the bracket against the "T" angle leg. Using the dimensions shown and the holes in the bracket as guide, mark and drill two, 17/32" holes through the top of the angle. Attach blade bracket to "T" angle with two, 1/2 x 1-1/2" cap screws and lock nuts. Repeat this step for the other side of the blade.
2. Install shoe holder with legs to the outside of bracket with four 3/8" x 1" cap screws, eight flat washers, and four lock nuts. Place flat washers next to cap screw head and next to nut.
3. Assemble five shoe spacers on each shoe. With snowplow attached to vehicle, install the shoes into shoe holders and secure them by inserting shoe pins into the holes at the top of the shoe pipe. Snap the ring on the pin over the shoe pipe. Use spacers and adjustment slot in brackets to adjust shoes so cutting edge is 1/4" to 1/2" from ground with shoes flat on ground.
4. As wear to the cutting edge occurs, shoe height can be adjusted by removing spacer rings as required to maintain the 1/4" difference between the cutting edge and the shoe. **To avoid blade mold board damage do not store removed rings on the shoe pipe above the shoe holder. This practice prevents the shoe from "dropping back" during a full trip of the cutting edge and may cause the ends of the shoes to strike the mold board.**

Copyright © 1999 Douglas Dynamics, L.L.C. All rights reserved. This material may not be reproduced or copied, in whole or in part, in any printed, mechanical, electronic, film or other distribution and storage media, without the written consent of Fisher Engineering. Authorization to photocopy items for internal or personal use by Fisher Engineering outlets is granted.

Fisher Engineering reserves the right under its product improvement policy to change construction or design details and furnish equipment when so altered without reference to illustrations or specifications used herein. Fisher Engineering and the vehicle manufacturer may require and/or recommend optional equipment for snow removal. Fisher Engineering offers a limited warranty for all snowplows and accessories. See separately printed page for this important information. The following are registered (®) and unregistered (™) trademarks of Douglas Dynamics, L.L.C.: FISHER®