



Fisher Engineering

P.O. Box 529 Rockland, Maine 04841

September 1, 2005
Lit. No. 22507, Rev. 02



Attachment Kit

Mitsubishi FG

1998 - 04

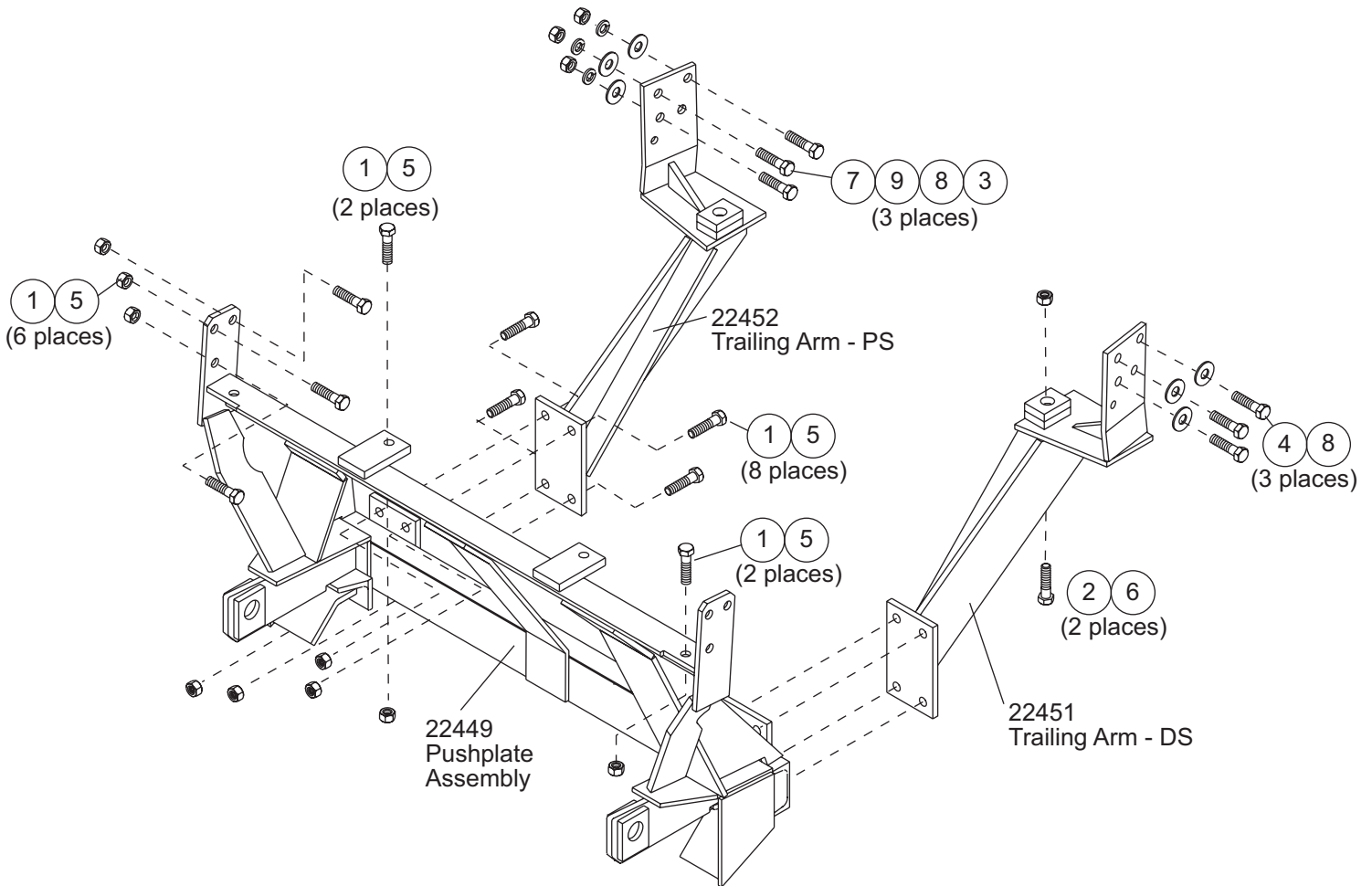
Table Of Contents

Attachment Kit Assembly	2
Bolt Bag Parts List	2
Installation Instructions	3

7162 Kit Parts List

7162 Attachment Kit					
Part #	Qty	Description	Part #	Qty	Description
22449	1	Pushplate Assembly	22452	1	Trailing Arm – PS
22451	1	Trailing Arm – DS	22506	1	Bolt Bag - 7162

Parts List and Diagram



22506 – Bolt Bag

Ref #	Part #	Qty	Description	Ref #	Part #	Qty	Description
1	90212	18	1/2-13 x 1-1/2" Cap Screw	6	5573	2	5/8-11 Locknut
2	90249	2	5/8-11 x 2-1/2" Cap Screw	7	90424	3	M10-1.25 Hex Nut
3	90389	3	M10-1.25 x 30 Cap Screw	8	90420	6	M10 Plain Washer
4	90590	3	M10-1.25 x 40 Cap Screw	9	90429	3	M10 Lock Washer
5	90355	18	1/2-13 Locknut				

⚠ WARNING

Indicates a potentially hazardous situation that, if not avoided, could result in death or serious personal injury.

⚠ CAUTION

Indicates a situation that, if not avoided, could result in minor personal injury and/or damage to product or property.

NOTE: Identifies tips, helpful hints and maintenance information the owner/operator should know.

Torque all fasteners according to the torque chart. For proper fit, do not tighten fasteners until instructed to do so.

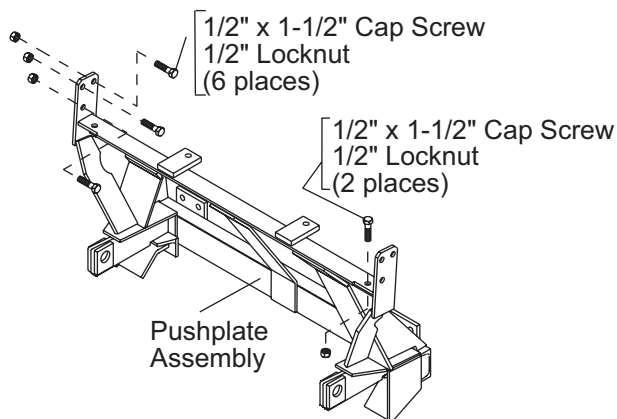
NC FASTENER TORQUE (FT-LB)			
DIAMETER- THREADS PER INCH	GRADE		
1/4 - 20	6	9	13
5/16 - 18	11	18	28
3/8 - 16	19	31	46
7/16 - 14	30	50	75
1/2 - 13	45	75	115
9/16 - 12	66	110	165
5/8 - 11	93	150	225
3/4 - 10	150	250	370
7/8 - 9	150	378	591
1 - 8	220	583	893

METRIC - FINE FASTENER TORQUE (N-M)			
NOM. SIZE- PITCH	GRADE		
8 - 1	26	36	43
10 - 1.25	51	72	87
12 - 1.25	89	125	150
14 - 1.25	141	198	240
16 - 1.5	215	305	365
18 - 1.5	295	420	500
20 - 1.5	420	590	710
22 - 1.5	570	800	960
24 - 2	725	1020	1220
27 - 2	1070	1510	1810

INSTALLATION INSTRUCTIONS

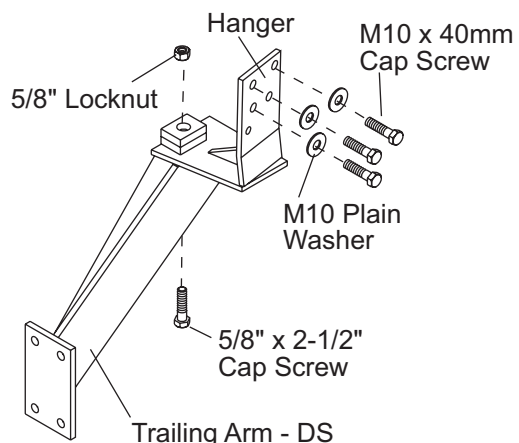
NOTE: If holes in the attachment do not align with the holes in the frame, first place fasteners in all holes that do align and ream remaining holes.

1. On the driver side of the frame, remove three bolts from the cab-tilt safety latch.
2. Remove the four-wheel drive control cable bracket on the bottom driver side of frame next to the radiator.
3. Install pushplate assembly by aligning the holes in the pushplate hanger with holes in the truck frame

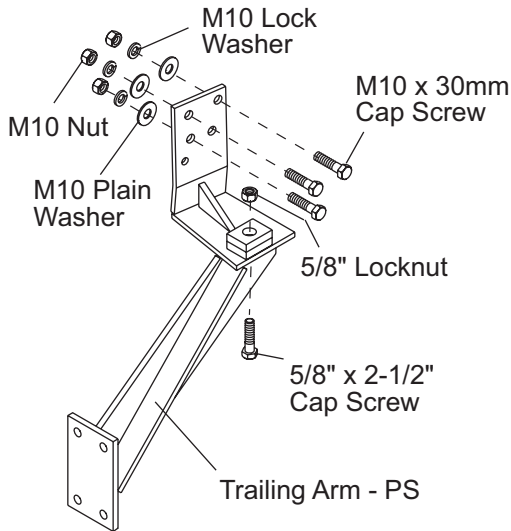


directly behind the bumper. **For vehicles with air conditioning:** Remove the A/C bracket bolts first, then slide the pushplate attachment hanger between the bracket and truck frame.

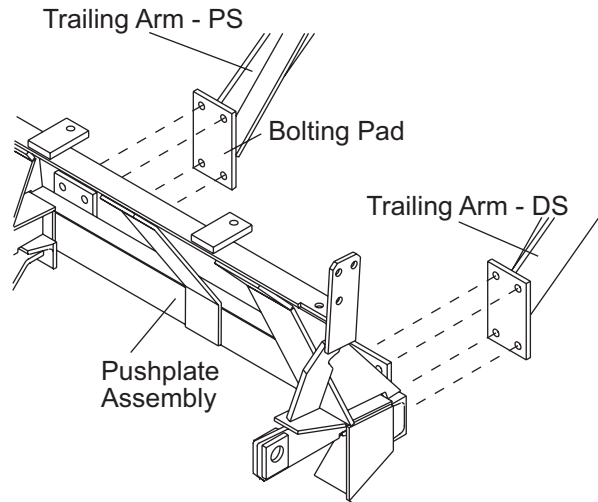
4. Fasten hangers to vehicle frame with six 1/2" x 1-1/2" cap screws and 1/2" locknuts. Fasten top of pushplate assembly with two 1/2" x 1-1/2" cap screws and 1/2" locknuts.
5. Put driver-side trailing arm in place with the hanger between the truck frame and cab-tilt safety latch bracket. Fasten trailing arm with a 5/8" x 2-1/2" cap screw and locknut to the cross member bracket on the frame. Fasten hanger to frame using three M10 x 40mm cap screws and plain washers.



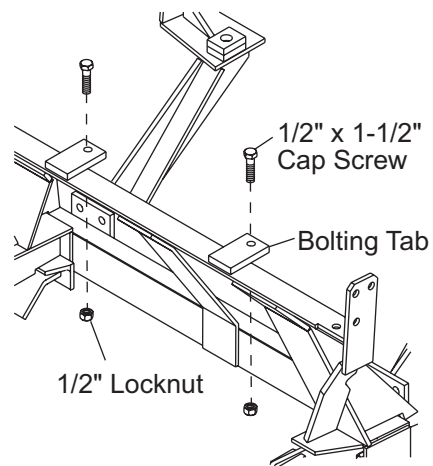
6. Reattach four-wheel drive control cable bracket.
7. Put passenger-side trailing arm in place and fasten with 5/8" x 2-1/2" cap screws to the cross member bracket on the frame. Fasten hanger to frame using three M10 x 30mm cap screws, flat washers, lock washers and nuts.



8. Fasten passenger-side and driver-side trailing arm bolting pads to pushplate assembly with 1/2" x 1-1/2" cap screws and 1/2" locknuts.



9. Tighten all fasteners according to appropriate Torque Chart.
10. Drill holes in frame for the bolting tabs and fasten with 1/2" x 1-1/2" cap screws and 1/2" locknuts. Tighten according to Torque Chart.



Copyright © 1998 Douglas Dynamics, L.L.C. All rights reserved. This material may not be reproduced or copied, in whole or in part, in any printed, mechanical, electronic, film or other distribution and storage media, without the written consent of Fisher Engineering. Authorization to photocopy items for internal or personal use by Fisher Engineering outlets is granted.

Fisher Engineering reserves the right under its product improvement policy to change construction or design details and furnish equipment when so altered without reference to illustrations or specifications used herein. Fisher Engineering and the vehicle manufacturer may require and/or recommend optional equipment for snow removal. Fisher Engineering offers a limited warranty for all snowplows and accessories. See separately printed page for this important information. The following are registered (®) and unregistered (™) trademarks of Douglas Dynamics, L.L.C.: FISHER®, Minute Mount®

Printed in USA