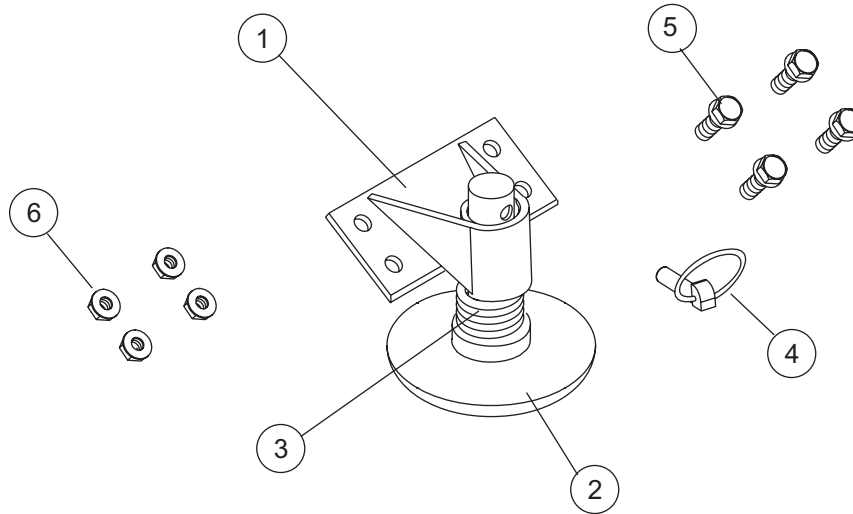




# Shoe Kit for LD Blades



26145 Shoe Kit for LD Blade							
Parts list				26146 - Bolt Bag			
Ref #	Part #	Qty	Description	Ref #	Part #	Qty	Description
1	26142	2	LD Shoe Bracket	-	26146	1	Bolt Bag for Shoe Kit
2	*26523	2	Shoe Assembly - 6" Solid Cast	5	98000	8	1/2-13 x 1-1/2 Flanged Head Cap Screw, Gr. 8
3	307	10	Shoe Spacer	6	98002	8	1/2 - 13 Gr. 8 Stover Nut
4	308K	2	Shoe Pin				

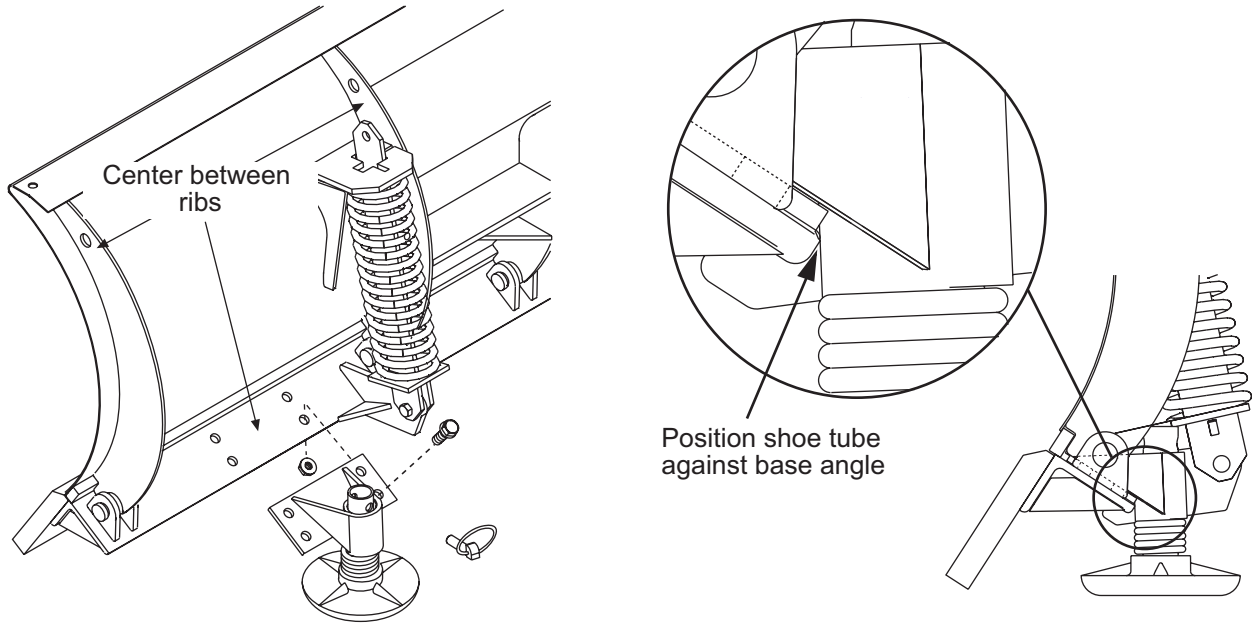
\* Consists of (1) shoe, (1) 308K shoe pin, and (5) 307 shoe spacers

### **⚠ WARNING**

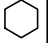


Do not exceed GVWR or GAWR including blade and ballast. The rating label is found on the driver-side vehicle door cornerpost.

**NOTE:** See your FISHER® outlet for application recommendations. Shoe Kit weight information may be found in the Kit Selection Guide.

**INSTALLATION INSTRUCTIONS**



1. Place shoe bracket approximately centered between outer two ribs on one side. Position shoe tube against rear edge of base angle. **Make sure shoe bracket is running parallel with base angle.**
2. Using bracket as a guide, drill four 17/32" holes in base angle. Fasten with four 1/2-13 x 1-1/2" flanged head Gr. 8 cap screws and 1/2" Gr.8 stover nuts. Tighten according to Torque Chart.
3. Repeat on opposite side.
4. Install shoes, spacers and pins.

NC FASTENER TORQUE (FT-LB)			
DIAMETER- THREADS PER INCH	GRADE		
			
	G2	G5	G8
1/4 - 20	6	9	13
5/16 - 18	11	18	28
3/8 - 16	19	31	46
7/16 - 14	30	50	75
1/2 - 13	45	75	115
9/16 - 12	66	110	165
5/8 - 11	93	150	225
3/4 - 10	150	250	370
7/8 - 9	150	378	591
1 - 8	220	583	893

Copyright © 1999 Douglas Dynamics, L.L.C. All rights reserved. This material may not be reproduced or copied, in whole or in part, in any printed, mechanical, electronic, film or other distribution and storage media, without the written consent of Fisher Engineering. Authorization to photocopy items for internal or personal use by Fisher Engineering outlets is granted.

Fisher Engineering reserves the right under its product improvement policy to change construction or design details and furnish equipment when so altered without reference to illustrations or specifications used herein. Fisher Engineering and the vehicle manufacturer may require and/or recommend optional equipment for snow removal. Fisher Engineering offers a limited warranty for all snowplows and accessories. See separately printed page for this important information. The following are registered (®) and unregistered (™) trademarks of Douglas Dynamics, L.L.C.: FISHER®