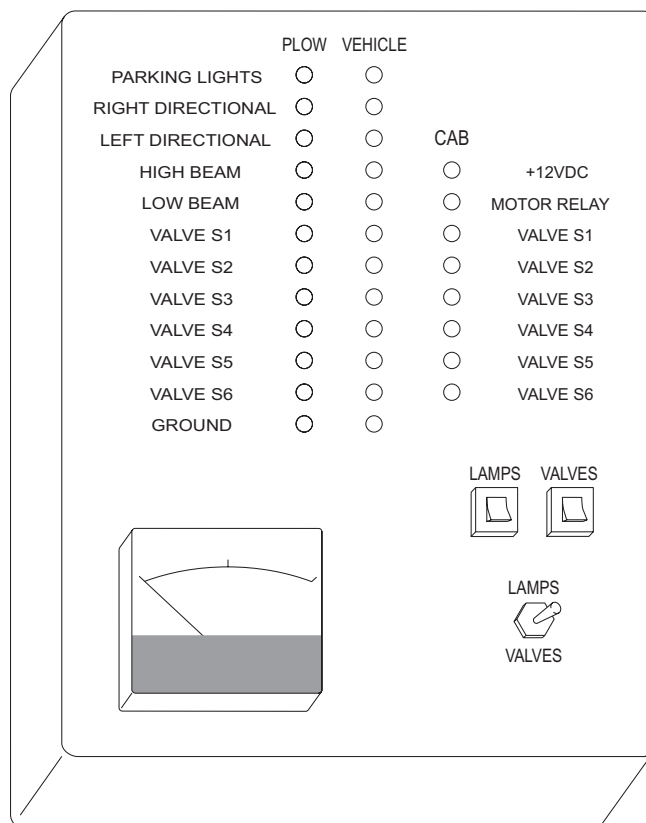


# Instructions for Modifying V-Plow Electrical Tester for Use with the Isolation Module Electrical System

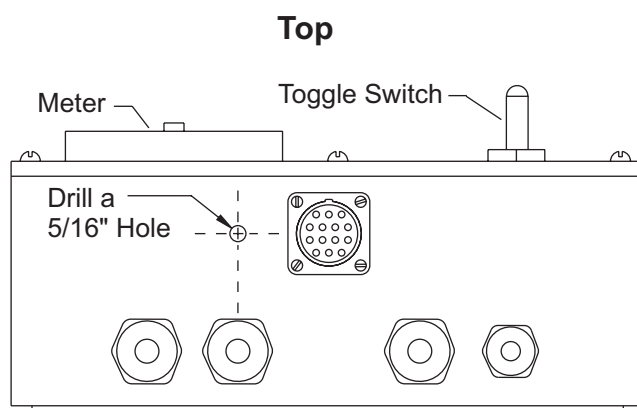
April 28, 2003  
Lit. No. 26513

Use these instructions to modify your V-Plow Electrical Tester for use with the Isolation Module. The modified tester is designed for use on V-plows with or without Isolation Module Systems.

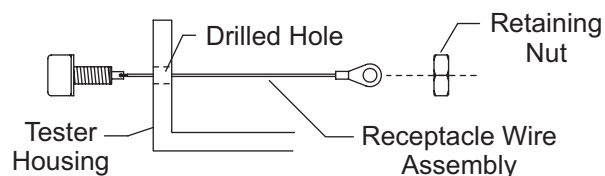
1. Remove the six cover screws.
2. Gently lift the cover from the Electrical Tester and set aside.



3. Drill a 5/16" hole in the tester housing as shown.



4. Remove the retaining nut from the receptacle wire assembly.
5. Insert the receptacle wire assembly through the drilled hole.
6. Slide the retaining nut over the ring lug and wire. Carefully thread the nut onto the receptacle. Do not overtighten.

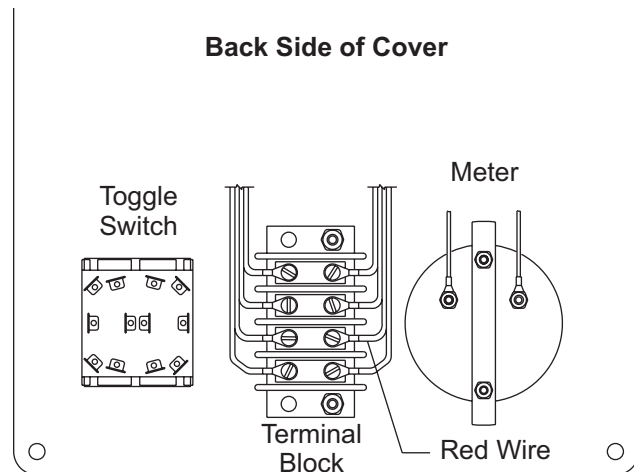


## Instructions for Modifying V-Plow Electrical Tester for Use with the Isolation Module Electrical System

---

7. Connect the red wire from the receptacle assembly to the red wire found on the terminal block.
8. Carefully replace the cover and install the six cover screws. Do not overtighten. Overtightening may damage the cover.

Follow the instructions in the *Electrical Tester Operator's Manual for the V-plow with Isolation Module* when using the modified tester.



The company reserves the right under its product improvement policy to change construction or design details and furnish equipment when so altered without reference to illustrations or specifications used.

**Printed in USA**