

# 3-Way Valve Adjustment

## ⚠ WARNING

Lower blade when vehicle is parked. Temperature changes could change hydraulic pressure, causing the blade to drop unexpectedly or damaging hydraulic components. Failure to do this can result in serious personal injury.

## ⚠ WARNING

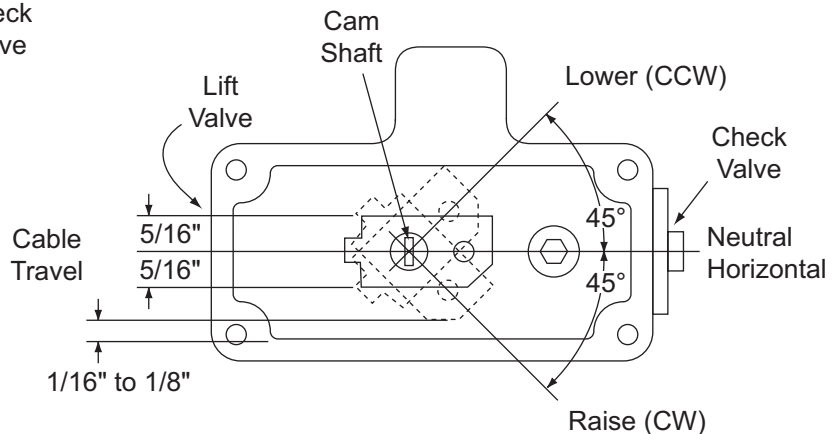
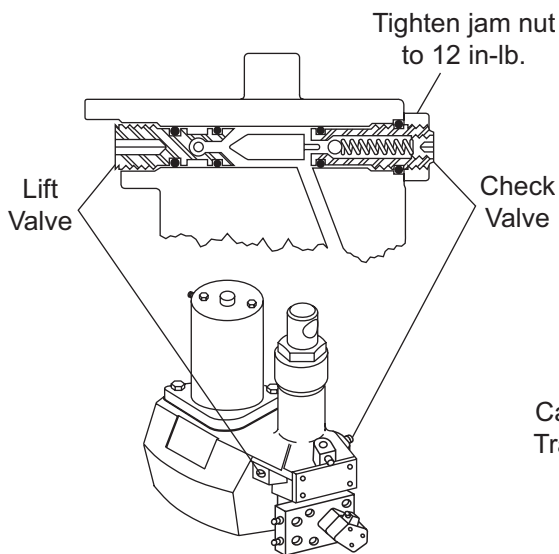
The driver shall keep bystanders clear of the blade when it is being raised, lowered or angled. Do not stand between the vehicle and the blade or within 8 feet of a moving blade. A moving or falling blade could cause personal injury.

1. Turn camshaft clockwise (CW) until it stops. If it can be rotated 360°, turn lift valve in 1/2 turn and try camshaft again. Repeat above until camshaft can no longer be turned CW.

**NOTE: Lift valve should be recessed with approximately 1 to 3 threads visible in the housing.**

2. Attach lever to camshaft with cable pin to the right. If flats on shaft do not align to lever, turn shaft counterclockwise (CCW) until they do align.

3. Rotate lever CW until it hits housing. Back off housing 1/16". Turn lift valve "IN" until it hits shuttle. If lever can not be turned to hit housing, back out or turn lift valve CCW 1/2 turn and repeat Step 3.
4. Place cable onto lever and raise snowplow.
  - A. If snowplow raises properly with control in "Raise" position, insert locking plug and tighten set screw.
  - B. If snowplow does not raise, turn lift valve CW while someone holds control in "UP" position until snowplow raises properly. Adjust as necessary for normal operation, insert locking plug and tighten set screw.
  - C. If shuttle seat is adjusted in too far, the snowplow may also raise while it is being angled. To correct this, turn lift valve CCW until snowplow angles without raising at the same time.
  - D. If snowplow will not lower, turn check valve assembly "IN" 1/4 turn and try again. Tighten 5/8" jam nut to 12 in-lb maximum.
  - E. If the snowplow will not stay up in neutral, turn check valve assembly "OUT" 1/8 turn and try again. Repeat until snowplow stays up in neutral. Tighten 5/8" jam nut to 12 in-lb maximum.



**NOTE: If 3-way valve cannot be adjusted per above, repeat Steps 2 through 4, starting with lift valve recessed to expose 1 thread in the housing, then 2 and so on, until adjustment is correct.**

The company reserves the right under its product improvement policy to change construction or design details and furnish equipment when so altered without reference to illustrations or specifications used.