

# Latch Bracket Kit

## Poly Hopper Spreaders

### INSTALLATION INSTRUCTIONS

1. Park the vehicle on a smooth, level, hard surface, such as concrete. Turn the vehicle ignition to the "OFF" position and remove the key.

#### **⚠ WARNING**

Do not exceed GVWR or GAWR ratings as found on the driver-side vehicle door cornerpost.

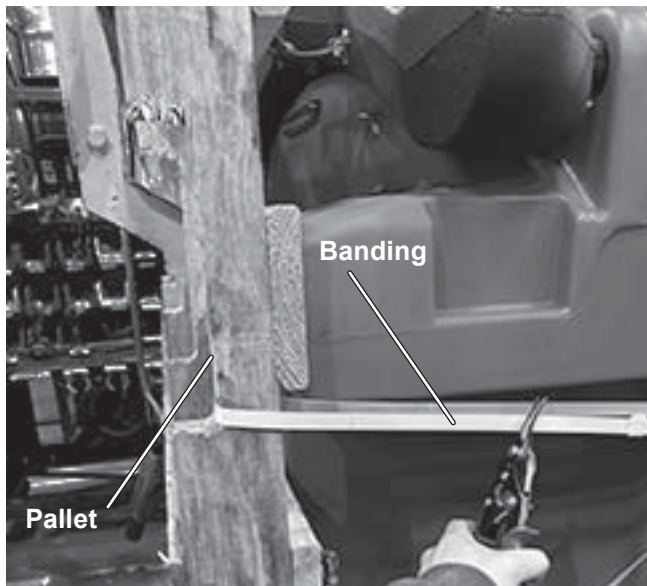
#### **⚠ CAUTION**

Read this document before installing the latch bracket kit.

#### **⚠ CAUTION**

Use standard methods and practices when attaching spreader and installing accessories, including proper personal protective safety equipment.

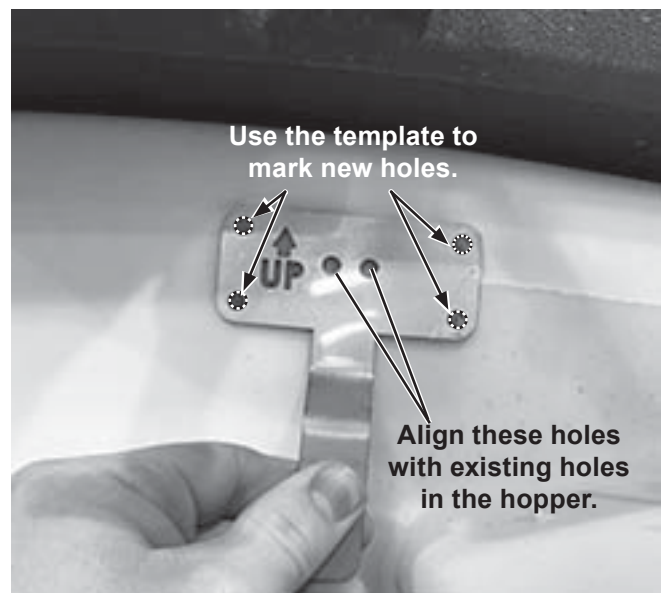
2. Cut the banding and remove the pallet from the hopper spreader.



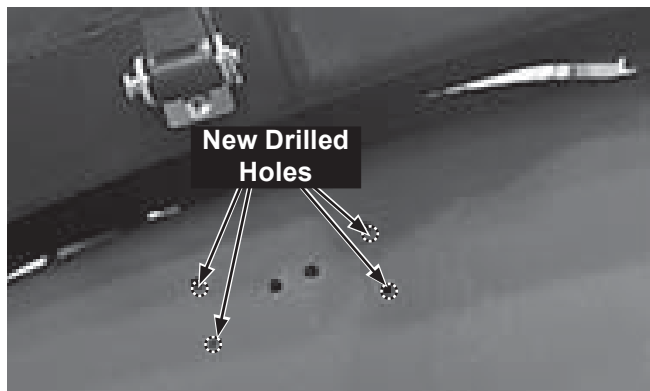
3. Drill out the latch bracket rivets using a 3/16" drill bit.



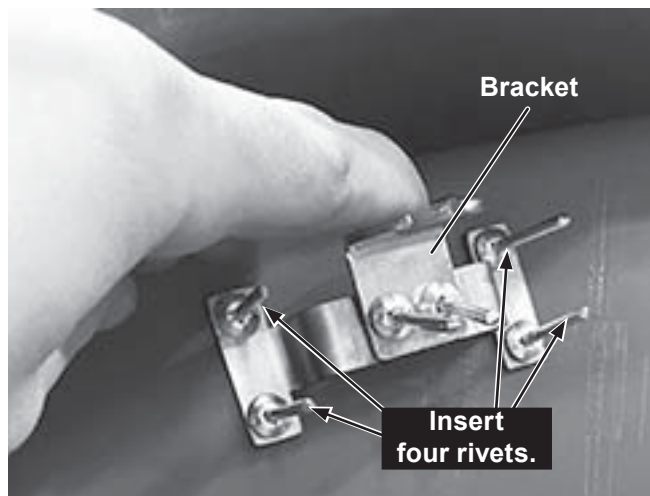
4. Align the center template holes with the latch bracket holes. Mark the positions of the four holes to be drilled as shown.



5. Drill out the holes marked In Step 4, creating four new rivet holes.



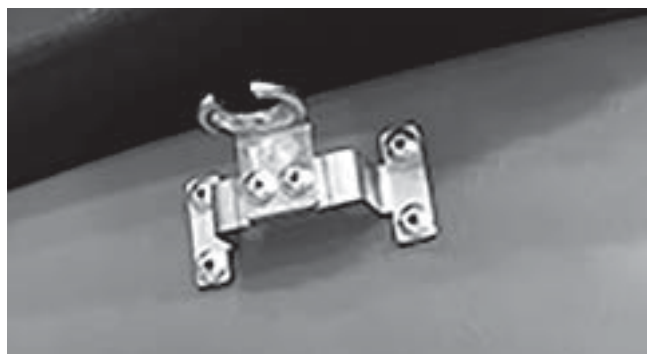
6. Position the bracket over the drilled holes and insert the rivets through the bracket.



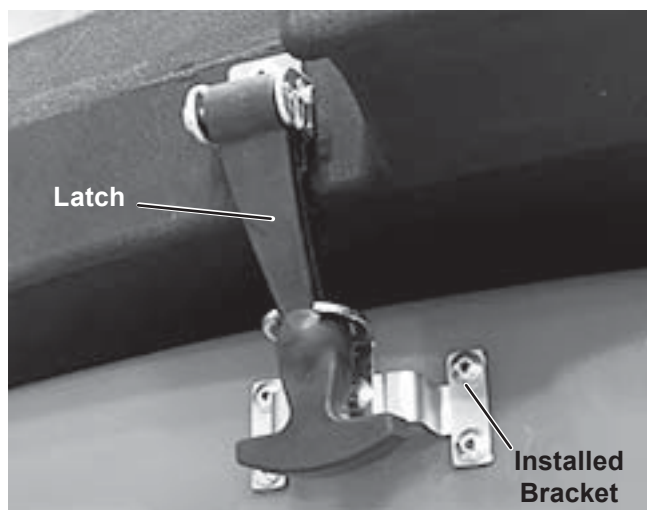
7. Using a rivet gun, fully install the rivets.



8. The fully installed bracket is shown below.



9. Verify that the hopper lid latch fully engages the new bracket and securely latches the lid in place.



10. Repeat Steps 2–8 to install the bracket on the other side of the hopper.

The company reserves the right under its product improvement policy to change construction or design details and furnish equipment when so altered without reference to illustrations or specifications used. This equipment manufacturer or the vehicle manufacturer may require or recommend optional equipment for spreaders. Do not exceed vehicle ratings with a spreader. The company offers a limited warranty for all spreaders and accessories. See separately printed page for this important information.

Printed in U.S.A.