

Poly Chute Frame Kit

Poly Hopper Spreaders

INSTALLATION INSTRUCTIONS

⚠ WARNING

Do not exceed GVWR or GAWR ratings as found on the driver-side vehicle door cornerpost.

⚠ CAUTION

Read this document before installing the poly chute frame kit.

⚠ CAUTION

Use standard methods and practices when attaching spreader and installing accessories, including proper personal protective safety equipment.

1. Park the vehicle on a smooth, level, hard surface, such as concrete. Turn the vehicle ignition to the "OFF" position and remove the key.
2. Install the deflector support with a 3/8" x 3/4" carriage bolt, 3/8" lock washer, and 3/8" hex nut.



3. Install the hoop assembly to the rear deflector assembly with a 3/8" x 3/4" carriage bolt, 3/8" lock washer, and 3/8" hex nut.



4. Install the front deflector support to the hoop assembly with a 3/8" x 1-1/4" carriage bolt, 3/8" lock washer, 3/8" flat washer, and 3/8" hex nut.



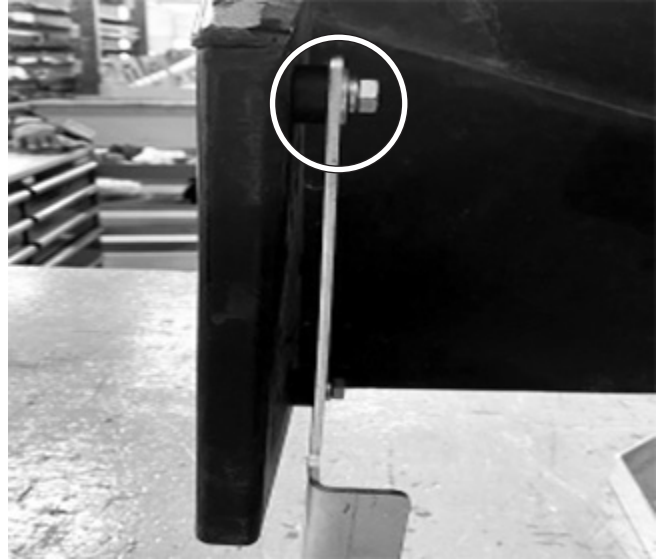
5. Install the existing rear deflector and support arms to the deflector assembly with a 3/8" x 3/4" carriage bolt, 3/8" lock washer, and 3/8" hex nut.



6. Tighten all carriage bolts with a 9/16" socket.



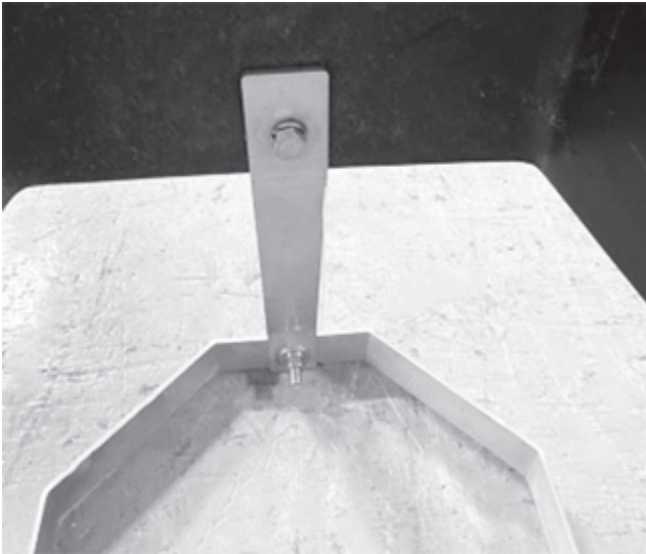
7. Install the assembly to the chute with a 3/8" x 1" cap screw, 3/8" x 1/4" x 1" spacer, 3/8" lock washer, and 3/8" flat washer.



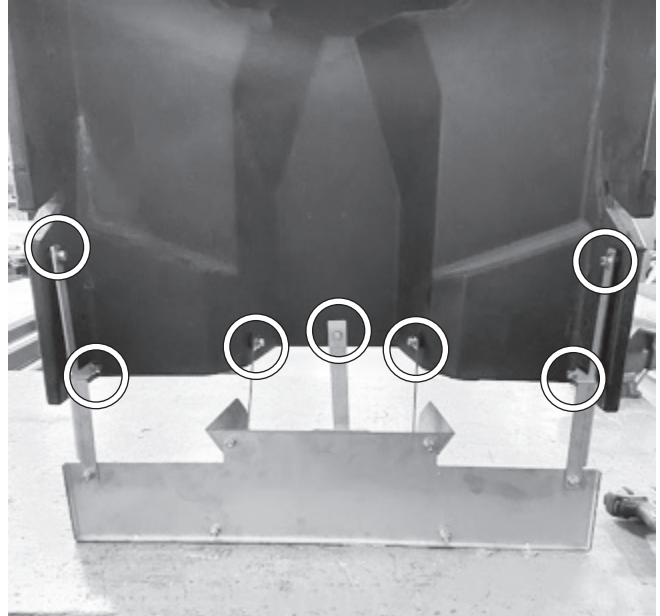
8. Install the arms with a 3/8" x 3/4" cap screw, 3/8" flat washer, and 3/8" lock washer.



9. Install the front support with a 3/8" x 1-1/2" cap screw, 3/8" lock washer, and 3/8" flat washer.



10. Tighten all fasteners using a 9/16" socket.



11. Install the spinner shaft, bearing, and motor by reversing the steps that were used to remove these components.

The company reserves the right under its product improvement policy to change construction or design details and furnish equipment when so altered without reference to illustrations or specifications used. This equipment manufacturer or the vehicle manufacturer may require or recommend optional equipment for spreaders. Do not exceed vehicle ratings with a spreader. The company offers a limited warranty for all spreaders and accessories. See separately printed page for this important information.

Printed in U.S.A.
