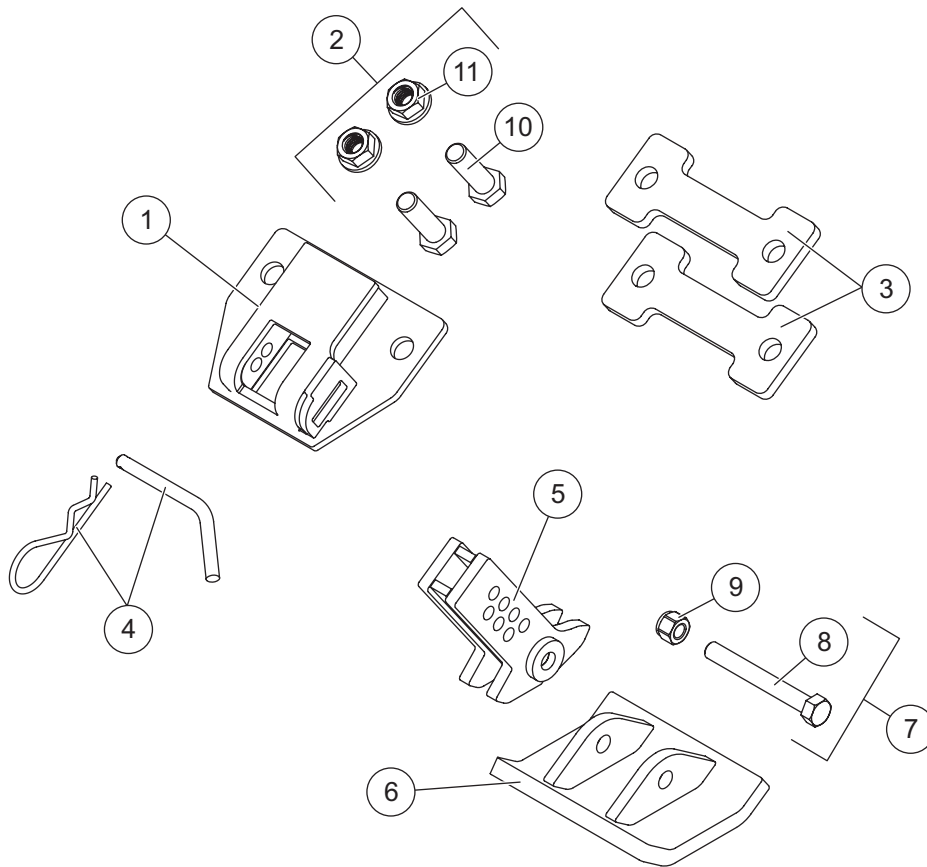




# Adjustable Shoe Kit

## HDX™ and HD2™ Snowplows

### PARTS LIST



41785 Adjustable Shoe Kit – HDX, HD2							
Item	Part	Qty	Description	Item	Part	Qty	Description
1	51871	2	Shoe Bracket	6	51389	2	Shoe Wear Pad
2	52645	1	Bolt Bag	7	52518	1	Shoe Wear Pad Bolt Kit
3	51832	4	Spacer Plate	8		2	1/2-13 x 4 Hex Cap Screw G8
4	52063	2	3/8 x 3 Hardened Adjustment Pin Kit	9		2	1/2-13 Locknut GB
5	51873	2	Shoe Stem				
<b>Item 2</b>				<b>52645 Bolt Bag</b>			
10		4	5/8-11 x 2-1/2 Hex Cap Screw G5	11		4	5/8-11 Flanged Locknut GG
G = Grade							

## INSTALLATION INSTRUCTIONS

### ⚠ WARNING

Do not exceed GVWR or GAWR, including blade and ballast. The rating label is found on the driver-side vehicle door cornerpost.

### ⚠ WARNING

Blade can drop unexpectedly. Place blade on jack stands. Failure to do so could result in serious personal injury.

### ⚠ CAUTION

Read this document before installing the Shoe Kit.

### ⚠ CAUTION

Use standard methods and practices when attaching snowplow and installing accessories, including proper personal protective safety equipment.

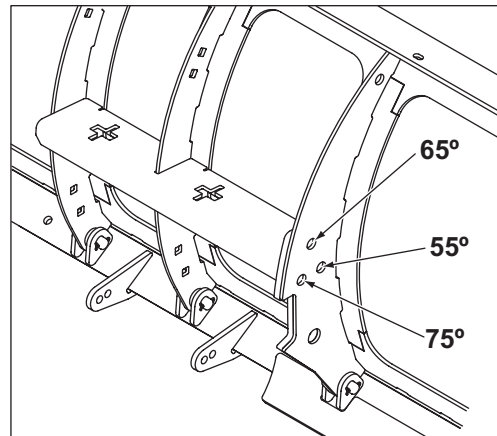
### ⚠ CAUTION

See your FISHER® outlet/Web site for specific vehicle application recommendations before installation. Shoe Kit weight information may be found in the eMatch tool.

Position of the adjustable shoe brackets and spacer plates varies according to the blade attack angle setting and the amount of cutting edge wear. Refer to the instructions specific to your snowplow application.

- **HD2™ Snowplows.** Blade is set at a 55° attack angle. No future adjustments to shoe bracket will be required to compensate for cutting edge wear.

- **HDX™ Snowplows.** To determine the blade attack angle setting, note which holes are used for attaching the quadrant to the blade.



Shoes installed on blades set to the 65° or 75° attack angles will require adjustment once the cutting edge wears past a certain point. Follow the "HDX Blades with Used Cutting Edges" instructions.

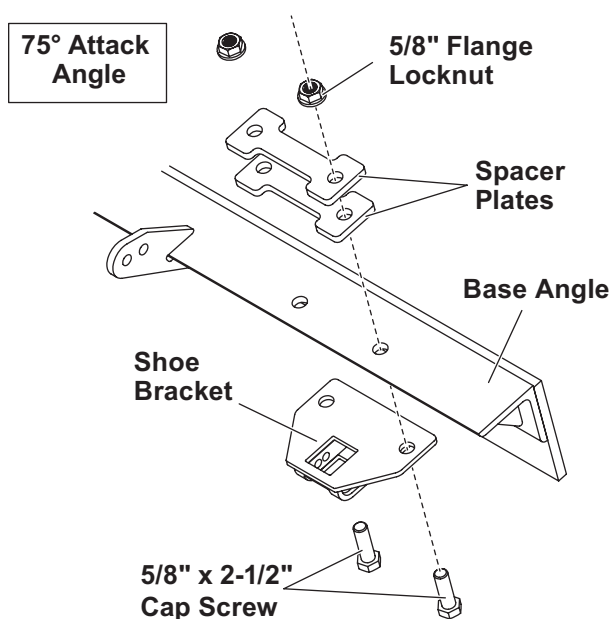
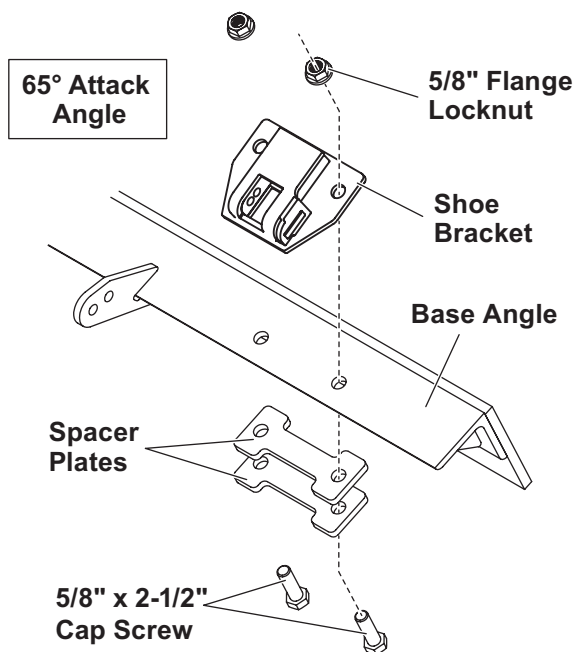
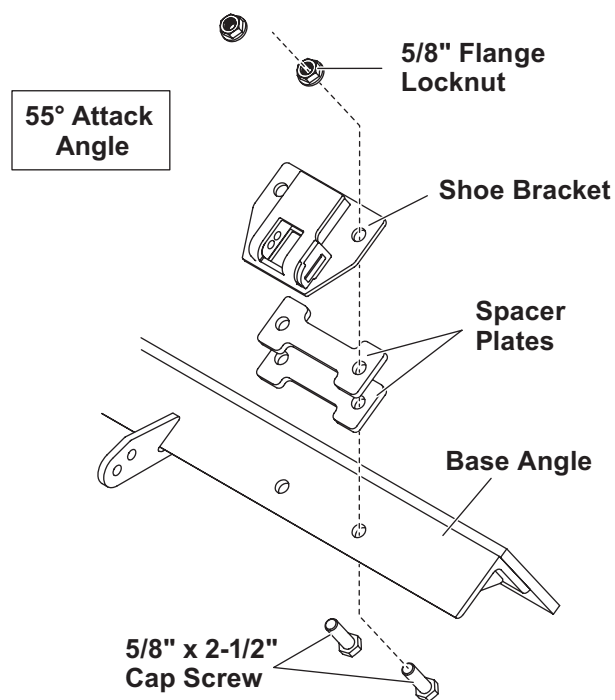
If shoes are being installed on a blade with already worn cutting edges, follow the "HDX Blades with Used Cutting Edges" instructions.

Whenever the blade attack angle is changed, refer back to these Installation Instructions and adjust the shoe bracket and spacer plates as required.

1. Park the vehicle on a smooth, level, hard surface, such as concrete. Raise the blade, then turn the control OFF.
2. From the front of the blade assembly, place jack stands under the blade.
3. Turn the control ON and lower the blade so the blade rests securely on the jack stands. Turn the control OFF. Turn the vehicle ignition to the "OFF" position and remove the key.

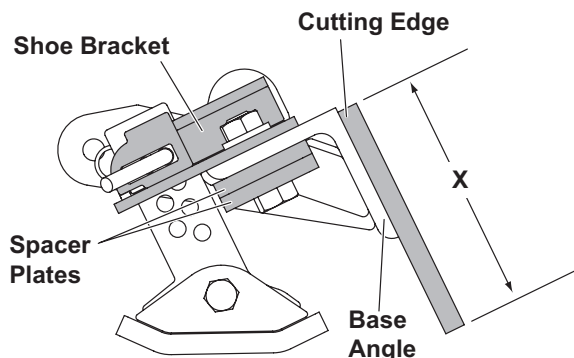
## Install Shoe Brackets—Blades with New Cutting Edges

1. Position the shoe bracket and spacer plates against the base angle according to the selected blade attack angle, as shown. For HD2™ blades, refer to the illustration for 55° attack angle.
2. Install the shoe brackets and spacer plates to the base angle using two supplied 5/8" x 2-1/2" cap screws and 5/8" flange locknuts, inserting the cap screws from the bottom as shown. Tighten fasteners to 150 ft-lb.
3. Repeat on the opposite side of the blade.



### Install or Adjust Shoe Brackets— HDX™ Blades with Worn Cutting Edges

1. Measure the height (X) of the cutting edge.



2. Install the shoe brackets and spacer plates as specified in the table, inserting the 5/8" x 2-1/2" cap screws from the bottom. (Example shows setup for 65° blade attack angle, new cutting edge.)

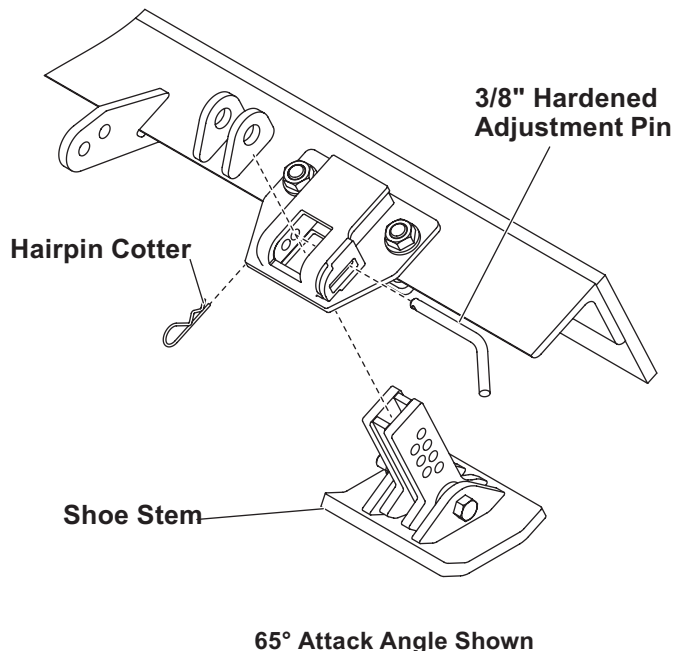
Tighten the fasteners to 150 ft-lb.

Attack Angle	Cutting Edge Height Measurement (X)	Shoe Bracket Position on Base Angle	Spacer Plates Position on Base Angle
55°	6" (new) to 3.375"	Top	Top
65°	6" (new) to 3.9"	Top	Bottom
	3.9" to 3.375"	Top	Top
75°	6" (new) to 5.5"	Bottom	Top
	5.5" to 3.375"	Top	Bottom

Replace cutting edge when height is less than 3.375".

### Insert Shoes

1. Insert the shoe stem up through the shoe bracket and secure it with the 3/8" x 3" hardened adjustment pin and hairpin cotter.
2. To adjust the shoe to the desired height, remove the hardened adjustment pin and reinsert it in a different shoe stem hole.



Copyright © 2015 Douglas Dynamics, LLC. All rights reserved. This material may not be reproduced or copied, in whole or in part, in any printed, mechanical, electronic, film or other distribution and storage media, without the written consent of Fisher Engineering. Authorization to photocopy items for internal or personal use by Fisher Engineering outlets or snowplow owner is granted.

Fisher Engineering reserves the right under its product improvement policy to change construction or design details and furnish equipment when so altered without reference to illustrations or specifications used. Fisher Engineering or the vehicle manufacturer may require or recommend optional equipment for snow removal. Do not exceed vehicle ratings with a snowplow. Fisher Engineering offers a limited warranty for all snowplows and accessories. See separately printed page for this important information. The following are registered (®) or unregistered (™) trademarks of Douglas Dynamics, LLC: FISHER®, HD2™, HDX™.

Printed in U.S.A.