



Fisher Engineering

50 Gordon Drive, Rockland, Maine 04841-2139 • www.fisherplows.com

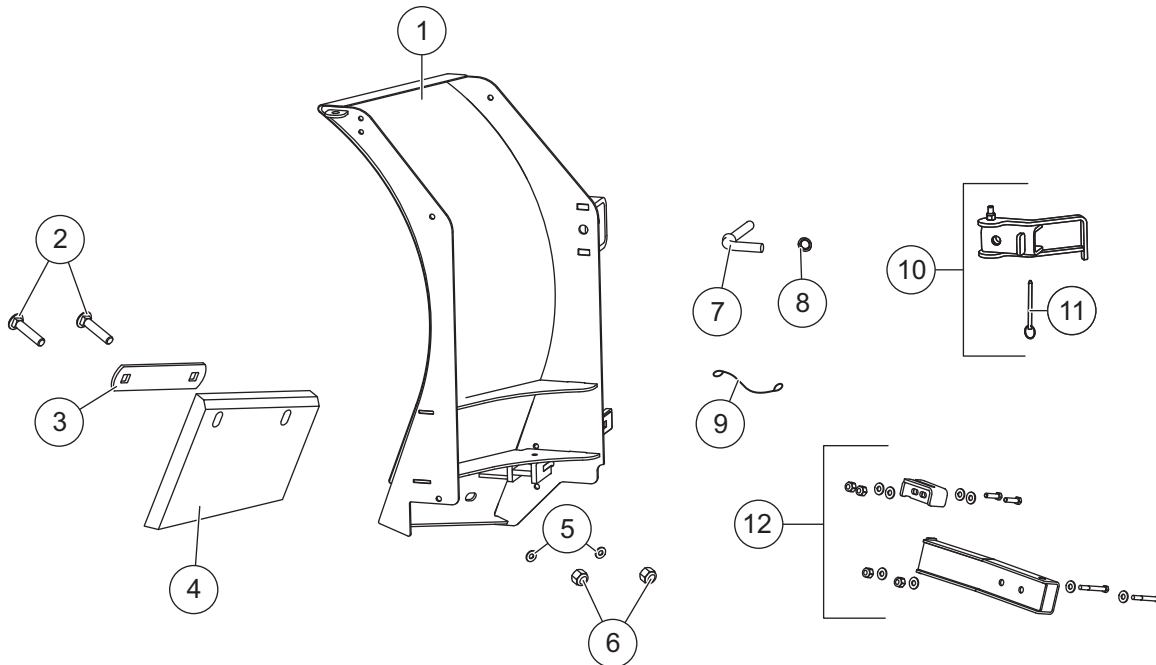
43511

October 15, 2013
Lit. No. 43074, Rev. 03

Blade Wing Extension Kit

8-1/2' & 9-1/2' XV2™ Snowplows

PARTS LIST



43511 Blade Wing Extension Kit							
Item	Part	Qty	Description	Item	Part	Qty	Description
1	43085	1	Blade Wing Extension – DS	6	91337	4	5/8-11 Hex Locknut GB
ns	43086	1	Blade Wing Extension – PS	7	42536	2	5/8-11 x 4-1/4 L-Bolt
2	90265	4	5/8-11 x 3-1/2 Carriage Bolt G5	8	43553	2	5/8 Push Nut
3	41978	2	Cutting Edge Brace	9	43554	2	12" Lanyard
4	41964	1	Cutting Edge – DS	10	42530	2	Cam Lock Assembly
ns	41965	1	Cutting Edge – PS	11	43540	2	1/4 x 3-1/4 Cotterless Hitch Pin
5	63927	4	5/8 Flat Washer	12	43082	1	Blade Stop Kit
ns = not shown				G = Grade			

INSTALLATION INSTRUCTIONS

⚠ WARNING

Do not exceed GVWR or GAWR, including blade and ballast. The rating label is found on the driver-side vehicle door cornerpost.

⚠ CAUTION

Read this document before installing the blade wing extension kit.

⚠ CAUTION

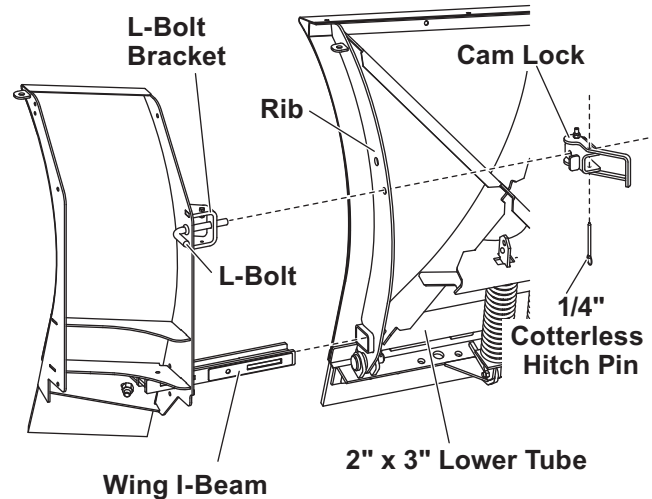
Use standard methods and practices when attaching snowplow and installing accessories including proper personal protective safety equipment.

⚠ CAUTION

See your FISHER® outlet/Web site for specific vehicle application recommendations before installation. Blade wing weight information may be found in the Kit Selection Guide.

1. Park the vehicle on a smooth, level, hard surface, such as concrete. Lower the blade to the ground, and turn the control OFF. Disconnect the snowplow from the vehicle, or turn the vehicle ignition to the "OFF" position and remove the key.
2. Align the holes in the cutting edge brace and cutting edge with the holes in the blade wing extension. Secure using 5/8" x 3-1/2" carriage bolts and 5/8" locknuts. Finger tighten the fasteners.
3. To install the blade stops, refer to the 43082 Blade Stop Kit Installation Instructions included with that kit.

4. Insert the wing I-beam into the 2" x 3" lower tube of the blade. Align the L-bolt with the hole in the rib of the blade, and slide the wing in until the L-bolt bracket is flush to the rib.

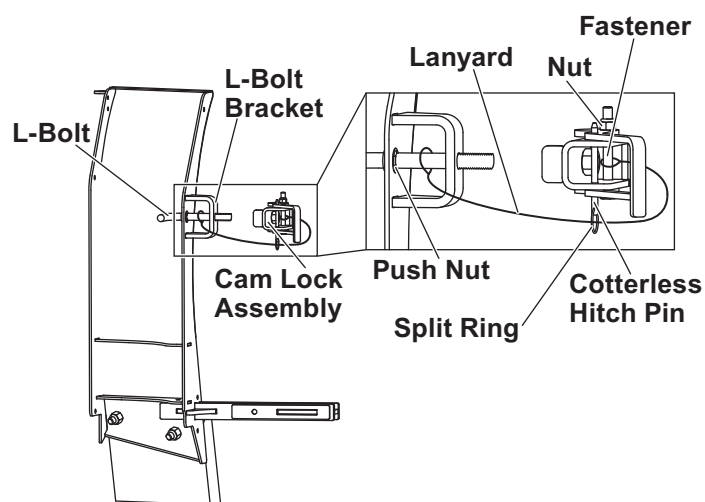


5. With the cam lock in the open position, thread the L-bolt into the cam lock.
6. Once the cam lock is tight against the blade rib, rotate the cam into the locked position and secure it with the 1/4" cotterless hitch pin.
7. Adjust cutting edge to match blade height. Fully hand tighten fasteners.
8. Repeat Steps 3–5 on the other side.

Lanyard

The lanyards come pre-installed. If necessary, a lanyard may be replaced as follows:

1. Remove the L-bolt from the bracket and loop one end of the lanyard around the L-bolt as shown below. Slide the L-bolt back through the bracket.



2. Feed the loose end of the lanyard through the split ring on the cotterless hitch pin in the cam lock.
3. Remove the nut and pull the fastener partway out of the cam lock. Loop the other end of the lanyard around the fastener and return fastener and nut.

Copyright © 2013 Douglas Dynamics, LLC. All rights reserved. This material may not be reproduced or copied, in whole or in part, in any printed, mechanical, electronic, film or other distribution and storage media, without the written consent of Fisher Engineering. Authorization to photocopy items for internal or personal use by Fisher Engineering outlets or snowplow owner is granted.

Fisher Engineering reserves the right under its product improvement policy to change construction or design details and furnish equipment when so altered without reference to illustrations or specifications used. Fisher Engineering or the vehicle manufacturer may require or recommend optional equipment for snow removal. Do not exceed vehicle ratings with a snowplow. Fisher Engineering offers a limited warranty for all snowplows and accessories. See separately printed page for this important information. The following are registered (®) or unregistered (™) trademarks of Douglas Dynamics, LLC: FISHER®, XV2™.

Printed in U.S.A.
