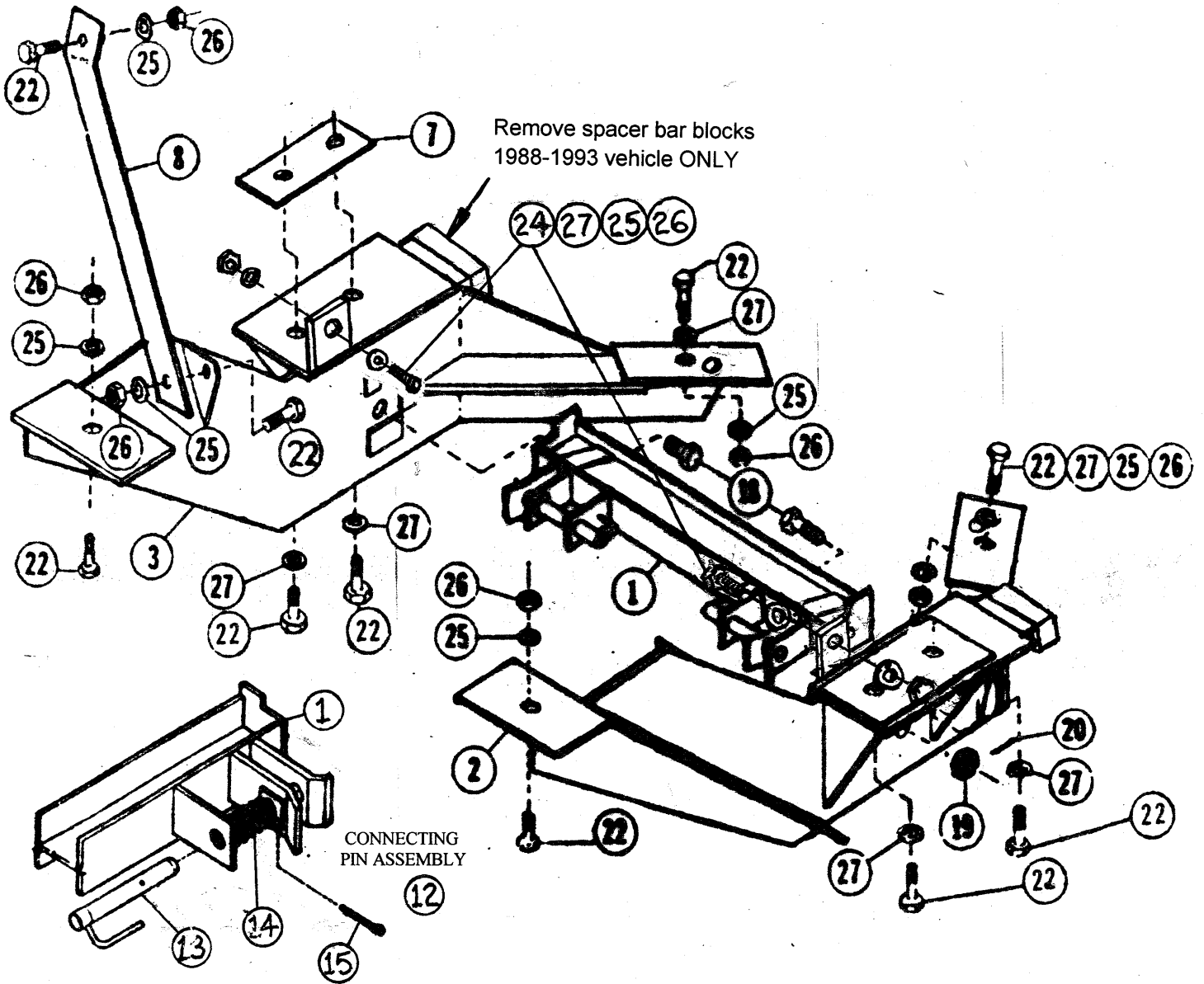


CHEV/GMC
Blazer
Yukon, 1/2 ton Suburban
Tahoe

K1500

1988-19__
1992-1994
1992-19__
1995-19__

AR289 rev. E



FASTENER TORQUE (FT-LB)			
DIAMETER- THREADS PER INCH	GRADE		
1/4 - 20	6	9	13
5/16 - 18	11	18	28
3/8 - 16	19	31	46
7/16 - 14	30	50	75
1/2 - 13	45	75	115
9/16 - 12	66	110	165
5/8 - 11	93	150	225
9/16 - 12	150	250	370
7/8 - 9	150	378	591
1 - 8	220	583	893

6214

Parts List

Ref #	Part#	Qty	Description	Ref #	Part#	Qty	Description
1	1510	1	Pushbeam (26-7/8" overall length)	15	*90601	2	1/4 X 1-1/2 Cotter Pin
2	8867	1	Pushplate - Driver's side	16	*4289	2	3/4 X 1-7/8 Machine Pin (not shown)
3	8868	1	Pushplate - Passenger's side	17	*90658	2	5/32 X 1-1/4 Cotter Pin (not shown)
4				18	*5005	2	5/8 X 1-1/2 (NC) Drilled Cap Screw
5				19	*90446	2	5/8 (NC) Slotted nut
6				20	*90012	2	3/16 X 1-3/4 Cotter pin
7	8643	2	Backing Plate	21			
8	8193	2	Headgear Brace	22	*90210	12	1/2 X 1-1/2 (NC) Gr.2 Cap Screw
9	3	1	Connecting Pin Release	23			
10				24	*90575	4	1/2 X 1-1/4 (NC) Gr.5 Cap Screw
11	5528	1	Cylinder Protector (not shown)	25	*90364	12	1/2 Lock Washer
12	6920	2	Connecting Pin Assembly	26	*90337	12	1/2 (NC) Nut
13	6815	2	Connecting pin w/ Handle	27	*90572	10	1/2 Gr.8 Flat Washer
14	*821	2	Spring	28	20374	1	Dash Bracket Bag

* Part of 8218 Bolt bag

INSTALLATION INSTRUCTIONS

1. Remove and discard Air Dam.

1988-1993 VEHICLES

2. Remove the 1/2" x 3/4" x 3" block from the rear part of the top plate (with the slotted holes) of the driver's side pushplate (2). Remove all sharp edges of weld. Install a 1/2 x 1-1/2 (NC) Gr. 5 cap screw (22) through the headgear brace tab on the driver's side pushplate (2).
3. Slide a backing plate (7) into the driver's side frame. Align with the two holes on the bottom of the frame. Align the rear slotted hole in the pushplate with the rear hole in the frame and bolting bar. Fasten with a 1/2 x 1-1/2 (NC) Gr. 5 cap screw (22) and flat washer (27) up through the pushplate and frame. Fasten a 1/2 x 1-1/2 (NC) Gr. 5 cap screw (22) with a flat washer (27) up through the forward slotted hole in the pushplate, frame and bolting bar. **Do not tighten any fasteners at this time.**

FOR 1992 YUKON, SUBURBAN, BLAZER, & ALL 1994 VEHICLES skip step 4.

4. Install a 1/2 x 1-1/2 (NC) Gr. 5 cap screw (22) with a flat washer (27) down through the cross member of the frame and the forward hole in the rear-most plate of the pushplate. Fasten with a 1/2" lock washer (25) and nut (26). **Do not tighten any fasteners at this time.**
5. Repeat steps 2 through 4 for the passenger side pushplate (3).
6. Assemble the connecting pins (12) to the pushbeam (1). First insert the spring (14) between the inner ears on one side of the pushbeam. Then insert the connecting pin (13) through all three ears with the handle of the pin towards the center of the beam. Leaving the hole in the pin between the inner two ears, pull back on the spring and install the cotter pin (15). Assemble the other side of the beam in the same manner.

7. Install the beam between the pushplates and fasten with two 5/8 x 1-1/2 (NC) drilled bolts (18) inserted out through the beam and the pushplates. Secure with the slotted nuts (19).
8. **Note: The headgear is packed in the common attachments box.**
Install the headgear onto the pushplates using two 1/2 x 1-1/2" (NC) Gr. 5 cap screws (22), lock washers (25), and nuts (26).
9. Install the cylinder protector (11) onto the bottom of the headgear with the flange forward and pointing down using two 1/2 x 1-1/4" (NC) cap screws (24), lock washers (25), and nuts (26).
10. Place the headgear braces (8) onto the previously installed 1/2 x 1-1/2" (NC) cap screws (22). Fasten with two 1/2" lock washers (25) and nuts (26). Attach the bent end of the braces to the headgear using two 1/2 x 1-1/2" (NC) Gr. 5 cap screws (22), lock washers (25), and nuts (26).
11. Tighten the beam bolts and secure using the cotter pins (20). **Tighten all other fasteners at this time.**

FOR 1992 YUKON, SUBURBAN, & BLAZER ONLY, do steps 12 & 13.

12. After all fasteners have been tightened, use the forward hole on the rear-most plate on the pushplate (2) as a guide and drill a 17/32" hole in the cross member of the frame. Place a 1/2 x 1-1/2" (NC) cap screw (22) with a flat washer (27) down through the cross member and the rear-most hole of the rear plate on the pushplate. Fasten with a 1/2" lock washer (25) and nut (26) and tighten.
13. Repeat steps 12 & 13 for the other pushplate (3). **Do not do steps 14 and 15.**

FOR ALL 1994 VEHICLES ONLY, do steps 14 & 15.

14. After all fasteners have been tightened, locate the rear-most hole on the rear-most plate of the pushplate (2). Using the rear hole as a guide, drill a 17/32" hole through the cross member of the frame. Insert a 1/2 x 1-1/2" (NC) cap screw (22) and flat washer (27) down through the frame hole and through the rear hole of the pushplate. Fasten with a 1/2" lock washer (25) and nut (26) and tighten.
15. Repeat step 14 for the other pushplate (3).

FOR ALL VEHICLES

16. Locate the front hanger on the pushplate (2) on the inside of the frame. Using the hole as a guide, drill a 17/32" hole through the frame. Install a 1/2 x 1-1/4" (NC) cap screw (24) and flat washer (27) through the hanger and the frame, then fasten with a 1/2" lock washer and nut (26), tighten.
17. Repeat step 16 for the other pushplate (3).

*****SPECIAL INSTRUCTIONS*****

18. **ENGINE OVERHEATING:** In the event of the vehicle engine overheating while traveling with the blade attached, the clutch fan assembly should be checked by a General Motors dealer's service department per Chevrolet service bulletin 6B.

HAZARD WARNING CIRCUIT: Snowplow auxiliary park/turn hazard lights can overload the vehicle's electrical circuit when the hazard lights flash for extended periods or when the foot brake is activated with the hazard lights flashing.

GM recommends that a light harness and relays be installed for the auxiliary snowplow lighting. See your GM dealer for service bulletin # 90-8A-20. Fisher also offers a directional harness kit, p.n. 8035.