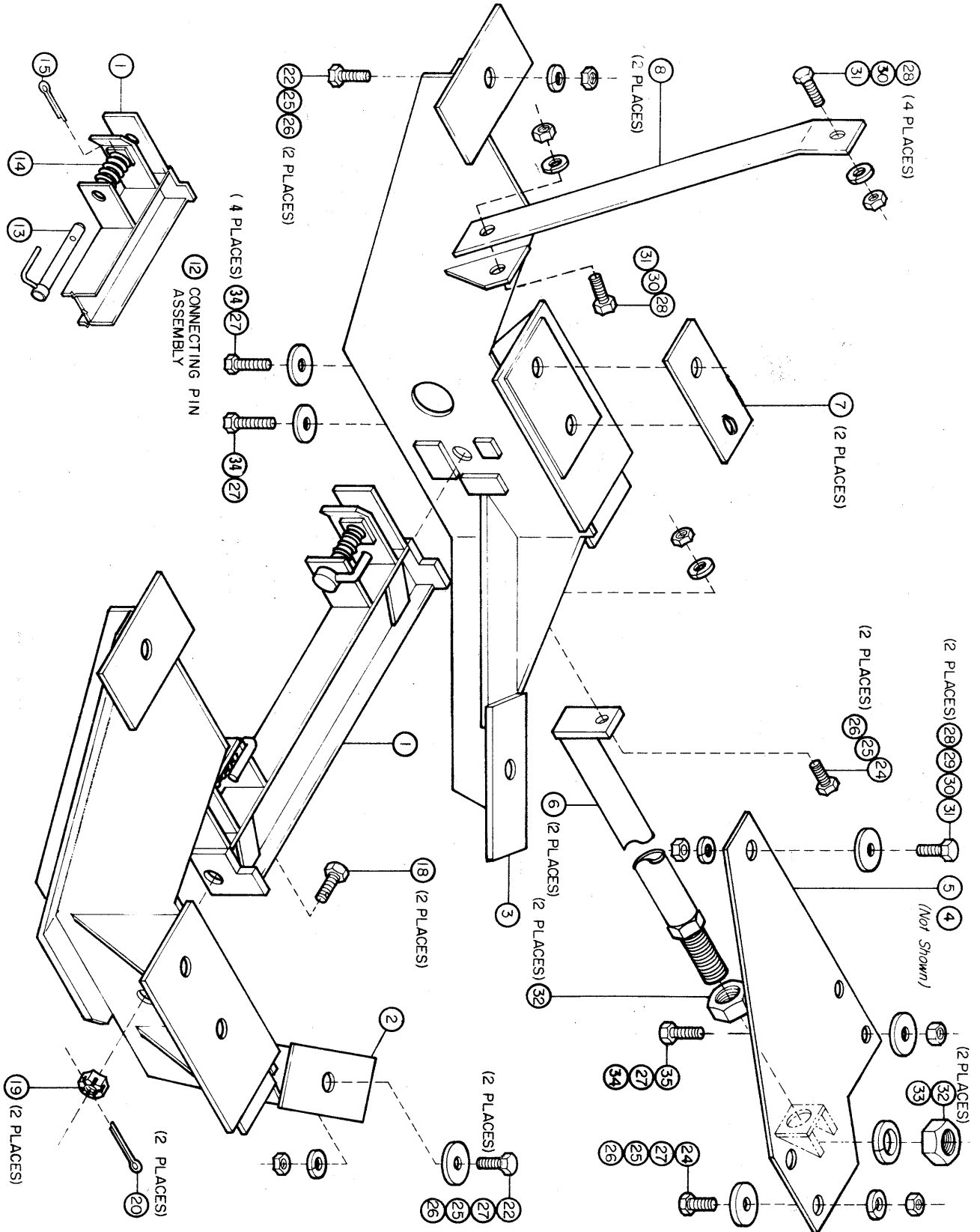


CHEV/GMC
CHEV/GMC

K3500
K2500 w/8600 GVW

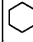


1988-19__ AL293D
1988-19__



6222

Ref #	Part#	Qty	Description	Ref #	Part#	Qty	Description
1	1513	1	Pushbeam (26-7/8" overall length)	19	*90446	2	5/8 (NC) Slotted nut
2	6111	1	Driver's side pushplate	20	*90012	2	3/16 X 1-3/4 Cotter pin
3	6112	1	Passenger's side Pushplate	21			
4	7693	1	Driver's side rear plate	22	*90209	4	1/2 X 1-1/2 (NC) Gr.2 Cap Screw
5	7694	1	Passenger's side rear plate	23			
6	6093	2	Push rail	24	*90575	4	1/2 X 1-1/4 (NC) Gr.5 Cap Screw
7	8643	2	Backing Plate	25	*90364	8	1/2 Lock Washer
8	3954	2	Headgear Brace	26	*90337	8	1/2 (NC) Nut
9	3	1	Connecting Pin Release	27	*90572	10	1/2 Gr.8 Flat Washer
10				28	*90244	6	5/8 X 1-1/2 (NC) Gr.5 Cap Screw
11				29	*90576	2	5/8 Flat Washers, Gr.8 hardened
12	6920	2	Connecting Pin Assembly	30	*90366	6	5/8 Lock Washers
13	6815	2	Connecting pin w/ Handle	31	*90343	6	5/8 (NC) Nuts
14	*821	2	Spring	32	*90347	4	7/8 (NC) Nuts
15	*90601	2	1/4 X 1-1/2 Cotter Pin	33	*90368	2	7/8 Lock Washers
16	*4289	2	3/4 X 1-7/8 Machine Pin (not shown)	34	*90210	6	1/2 X 1-1/2 (NC) Gr.5 Cap Screw
17	*90658	2	5/32 X 1-1/4 Cotter Pin (not shown)	35	*90355	2	1/2 (NC) HX Lock Nut Gr.5
18	*5005	2	5/8 X 1-1/2 (NC) Drilled Cap Screw		20374	1	Dash Bracket Bag

* PART OF 6661 BOLT BAG

FASTENER TORQUE (FT-LB)			
DIAMETER- THREADS PER INCH	GRADE		
	 G2	 G5	 G8
1/4 - 20	6	9	13
5/16 - 18	11	18	28
3/8 - 16	19	31	46
7/16 - 14	30	50	75
1/2 - 13	45	75	115
9/16 - 12	66	110	165
5/8 - 11	93	150	225
9/16 - 12	150	250	370
7/8 - 9	150	378	591
1 - 8	220	583	893

- A. Remove and discard air dam and tow hooks. Remove and save aluminum skid plate from below transmission.
- B. Install a 5/8 X 1-1/2 (NC) Gr.5 cap screw (28) through the headgear brace tab on driver's side pushplate (2). The cap screw cannot be installed after plate is in place. Slide backing plate (7) into drivers' side frame and align with two holes in frame. Align aft slotted hole in pushplate with aft hole in frame on backing plate. Fasten with a 1/2 X 1-1/2 (NC) Gr.5 cap screw (34) and hardened flat washer (27) up through forward slotted hole in plate, frame and backing plate. Install a 1/2 X 1-1/2 (NC) Gr.2 cap screw (22) with hardened flat washer (27) down through cross member and rear hole in pushplate. Fasten with a 1/2 lock washer (25) and nut (26). Install the passenger's side pushplate (3) in the same manner.
- C. Install connecting pin assembly (12) to pushbeam (1). First insert springs (14) between two inner ears on each side of pushbeam (1). Then, insert connecting pin (13) through all three ears with handle of pin towards the center of the beam. Leaving the hole in the pin between the two ears, pull back on spring and install cotter pin (15).
- D. Install pushbeam between pushplates and fasten with two 5/8 x 1-1/2 (NC) drilled bolts (18) inserted out through beam and pushplates. Secure with slotted nuts (19).
- E. **NOTE:** Headgear is packed in common attachments box. Install headgear onto pushplates using two 1/2 X 1-1/2 (NC) Gr.5 cap screws (22), lock washers (25) and nuts (26).
- F. Place headgear braces (7) onto previously installed 5/8 X 1-1/2 (NC) cap screws. Fasten with two 5/8 lock washers (30) and nuts (31). Attach bent end of braces to headgear using two 5/8 X 1-1/2 (NC) cap screws (28), lock washers (30) and nuts (31).
- G. Tighten beam bolts and secure using cotter pins (20). Tighten all other fasteners.
- H. Reinstall aluminum skid plate.
- I. Remove and discard forward cap screw from transmission cross member (both sides). Ream holes to 17/32". Place long edge of driver's side rear plate (4) against and along frame. Install one 5/8 X 1-1/2 Gr. 5 cap screw (28) with hardened flat washer (29) down through slot in frame and forward hole in rear plate. Fasten with a 5/8 lock washer (30) and nut (31). Install one 1/2 X 1-1/2 Gr. 5 cap screw (34) up through previously reamed hole and fasten with 1/2 Gr. 8 flat washer (27) and 1/2 lock nut (35). Insert one 1/2 X 1-1/4 Gr. 5 cap screw (24) and 1/2 Gr. 8 flat washer (27) up through plate and cross member. Fasten with one 1/2 lock washer (25) and nut (26). Repeat procedure for passenger's side rear plate (5). Tighten all fasteners.
- J. Install one 7/8" nut (32) onto threaded end of push rail (6), all the way to head of threads. Place threaded end of push rail through tab on rear plate and align forward end with tab on pushplate. Fasten forward end to pushplate with one 1/2 X 1-1/4 cap screw (24), lock washer (25) and nut (26). Tighten this fastener. Repeat for other side.
- K. Adjust 7/8" nut on pushrail aft until it contacts tab on rear plate. Continue adjusting nut aft until rear plate has been moved as far aft in slots and bolt to bolt clearance will allow. Secure pushrail to rear plate with a 7/8" lock washer (33) and nuts (32). Repeat for other side. Check to be sure all fasteners are tight.

*** SPECIAL INSTRUCTIONS ***

- L. **ENGINE OVERHEATING** - in the event engine overheating occurs while traveling with the blade attached, the clutch fan assembly should be checked by General Motors Dealer's Service Department per CHEVROLET SERVICE BULLETIN 6B.

HAZARD WARNING CIRCUIT

Snowplow auxiliary park/turn hazard lights can overload the vehicle electrical circuit when hazard lights flash for extended periods or when foot brake is activated with hazard lights flashing. GM recommends that a light harness and relays be installed for auxiliary snowplow lighting. See your GM dealer for Service Bulletin # 90-8A-20. Fisher also offers a directional harness kit, PN 8035.