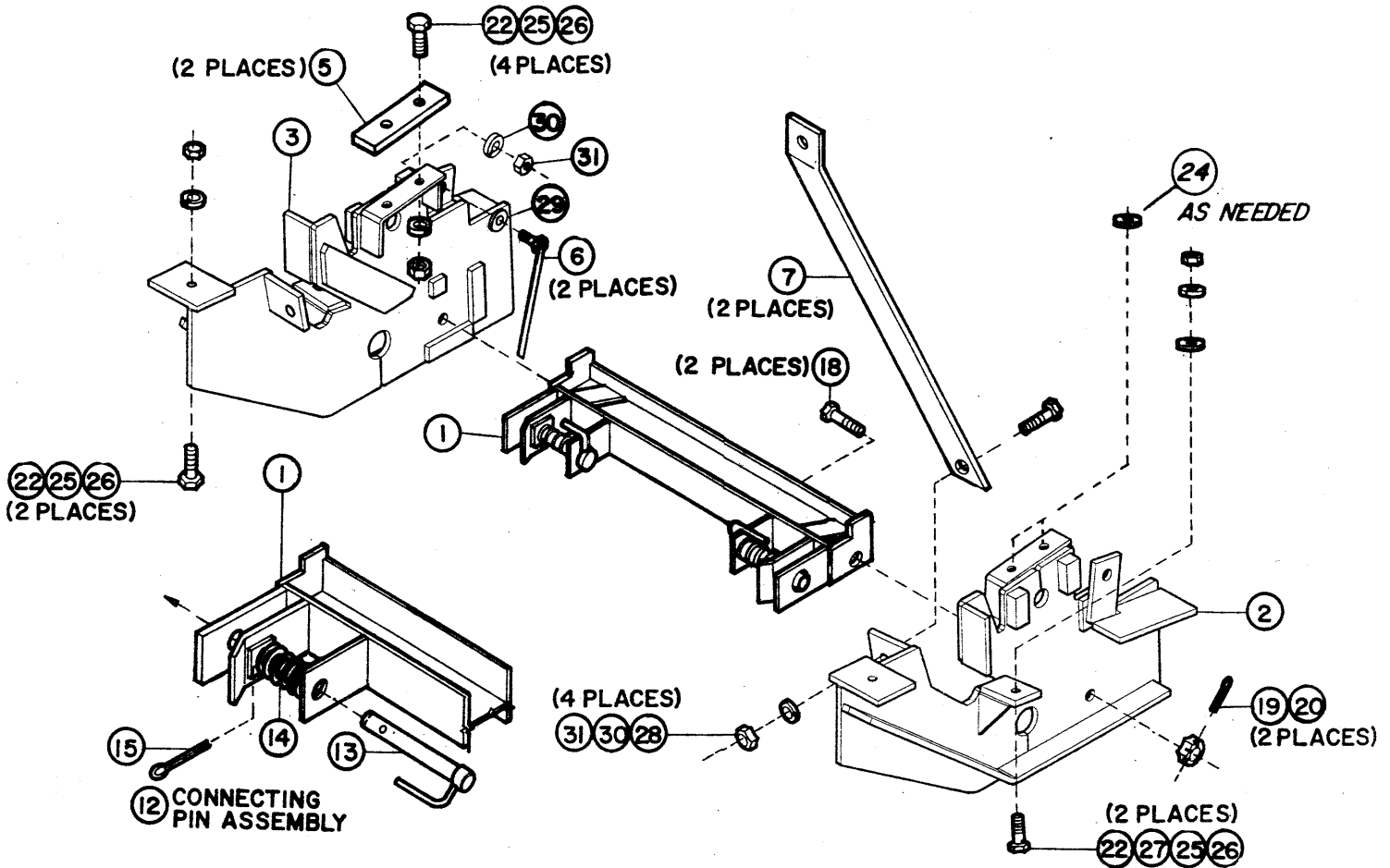


CHEV/GMC C3500 2WD
HEAVY DUTY

1991-19__

7112B



PARTS LIST

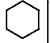
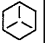

6382

Ref #	Part#	Qty	Description	Ref #	Part#	Qty	Description
1	1513	1	Pushbeam (26-7/8" overall length)	17	*90658	2	5/32 X 1-1/4 Cotter Pin (not shown)
2	7926	1	Driver's side pushplate	18	*5005	2	5/8 X 1-1/2 (NC) Drilled Cap Screw
3	7927	1	Passenger's side Pushplate	19	*90446	2	5/8 (NC) Slotted nut
4	7413	1	License Plate Bracket	20	*90012	2	3/16 X 1-3/4 Cotter pin
5	7892	2	Backing Plate	21			
6	7928	2	5/8 x 1-1/2 Bolt w/Handle	22	*90210	8	1/2 X 1-1/2 (NC) Gr.2 Cap Screw
7	3954	2	Headgear Brace	23			
8				24	*90323	6	5/8 Flat Washer ZP
9				25	*90364	8	1/2 Lock Washer
10				26	*90337	8	1/2 (NC) Nut
11	3	1	Connecting Pin Release	27	*90572	2	1/2 Gr.8 Flat Washer
12	6920	2	Connecting Pin Assembly	28	*90244	4	5/8 X 1-1/2 (NC) Gr.5 Cap Screw
13	6815	2	Connecting pin w/ Handle	29	*90576	2	5/8 Flat Washers, Gr.8
14	*821	2	Spring	30	*90366	6	5/8 Lock Washers
15	*90601	2	1/4 X 1-1/2 Cotter Pin	31	*90343	6	5/8 (NC) Nuts
16	*4289	2	3/4 X 1-7/8 Machine Pin (not shown)	32	20374	1	Dash Bracket Bag

* Part of 7925 Bolt Bag

IMPORTANT VEHICLE LOADING NOTICE

1. The total vehicle curb weight must not exceed the gross vehicle weight (GVW) or cause either the front or rear gross axle weight rating (GAWR) to be exceeded. The GVW and GAWRS are specified on the safety compliance certification label affixed to the vehicle. The vehicle curb weight includes all aftermarket accessories, the snowplow system including the blade, the vehicle occupants and the cargo.
 2. This vehicle usually will require at least 1200-2500 pounds of ballast. Secure the ballast at the rear of the body.
-
- A. Remove license plate holder and two inner and lower bumper bolts.
 - B. Align hole in front tab on driver's side pushplate (2) with lower bumper hole. Insert one 1/2 x 1-1/2 (NC) grade 5 cap screw (22) up through tab and bumper. Fasten with one grade 8 flat washer (27), lock washer (25), and (NC) nut (26). Do not fully tighten any fasteners until instructed to do so. Place jack on bottom rear end of pushplate and lift into position. Align hole in tab on rear of pushplate with slot in frame. If hole does not line properly with slot, ream with 5/8" drill and install fastener. Insert a 5/8 x 1-1/2 (NC) cap screw w/handle (6) with 5/8 gr.8 flat washer (29) from outer part of frame spring shackle out thru slotted hole and tab. Fasten with a 5/8 lock washer (30) and nut (31).
 - C. Tighten front cap screw on bumper. Using holes in pushplate flange as guides, drill two 17/32" holes through frame cross member. If there is a gap between cross member and pushplate flange, use 5/8 flat washers (24) as a spacer. Place backing plate (5) on top of cross member and insert two 1/2 x 1-1/2 (NC) grade 5 cap screws (22) down through backing plate, cross member, and pushplate. Fasten with two 1/2 lock washers (25) and nuts (26). Loosen front cap screw so that pushplates are free to assemble other parts.
 - D. Repeat steps B and C for passenger's side pushplate (3).
 - E. Install connecting pin assembly (12) to pushbeam (1). First insert springs (14) between two inner ears on each side of pushbeam. Then, insert connecting pin (13) through all three ears with handle of pin towards the center of the beam. Leaving the hole in the pin between the inner two ears, pull back on spring and install cotter pin (15).
 - F. Install pushbeam between pushplates and fasten with two 5/8 x 1-1/2 (NC) drilled bolts (18) inserted out through beam and pushplates. Secure with slotted nuts (19).
 - G. (**NOTE:** Headgear is packed in common attachments box.) Install headgear onto pushplates using two 1/2 x 1-1/2 (NC) gr.5 cap screws (22), lock washers (25) and nuts (26). Place straight ends of headgear braces (7) onto rear side of tabs on pushplates. Fasten with two 5/8 x 1-1/2 (NC) cap screws (28), lock washers (30) and nuts (31). Attach bent end of braces to headgear using two 5/8 x 1-1/2 (NC) cap screws (28), lock washers (30) and nuts (31).
 - I. Tighten beam bolts and secure using cotter pins (20). Fully tighten all other fasteners.
 - J. Install license plate bracket (4) as per license plate installation instructions.
 - K. Check to be certain that all fasteners are tightened properly.

FASTENER TORQUE (FT-LB)			
DIAMETER- THREADS PER INCH	GRADE		
			
1/4 - 20	6	9	13
5/16 - 18	11	18	28
3/8 - 16	19	31	46
7/16 - 14	30	50	75
1/2 - 13	45	75	115
9/16 - 12	66	110	165
5/8 - 11	93	150	225
9/16 - 12	150	250	370
7/8 - 9	150	378	591
1 - 8	220	583	893