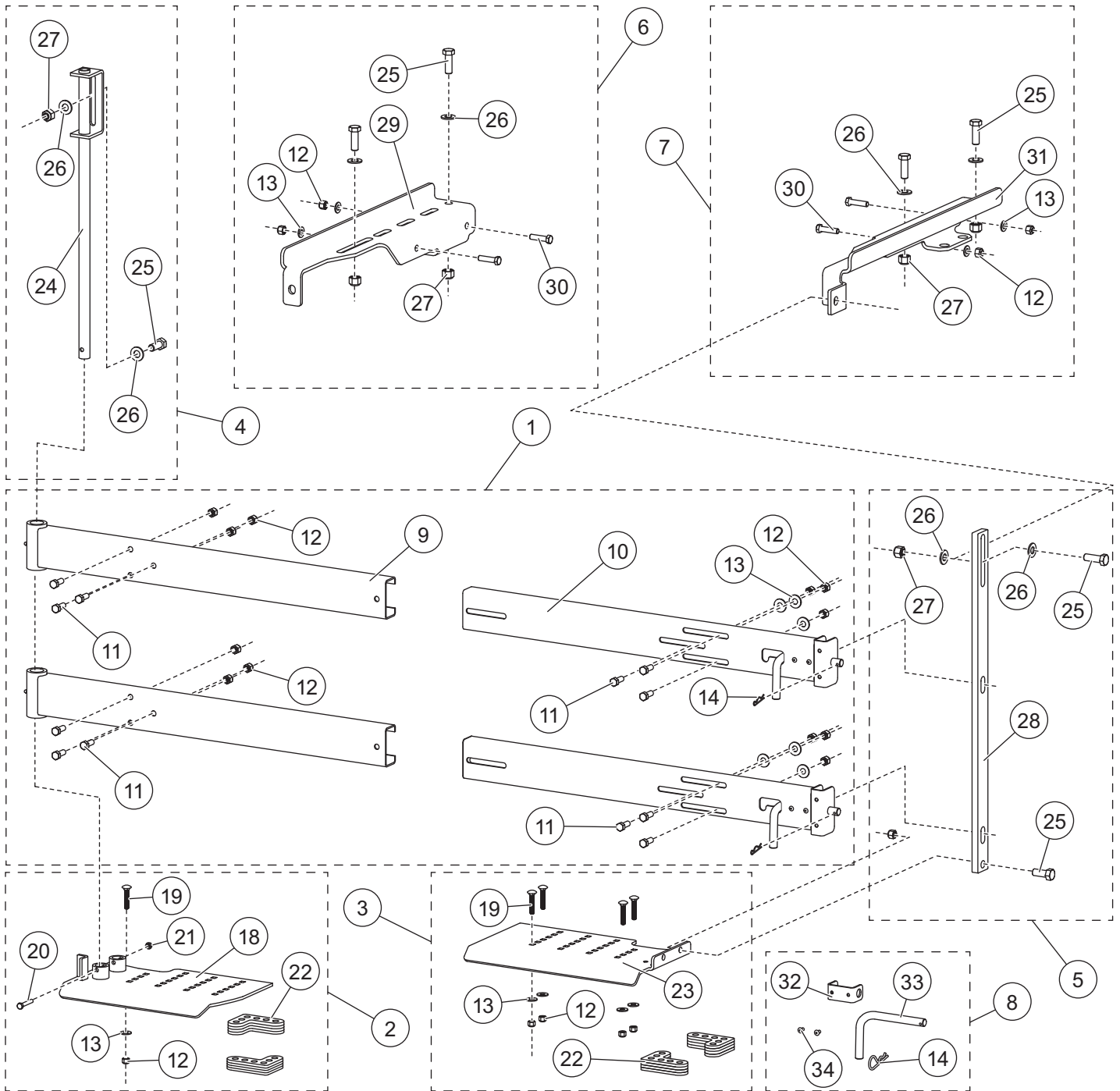


PARTS LIST



# 75917-1

75917-1 Pivot Mount							
Item	Part	Qty	Description	Item	Part	Qty	Description
1	75960	1	Channel Assy Kit	5	75964	1	Latch Bar Kit
2	75961	1	Pivot Bumper Plate Kit	6	75965	1	Top Plate Kit – DS
3	75962	1	Latch Bumper Plate Kit	7	75966	1	Top Plate Kit – PS
4	75963	1	Main Pivot Kit	8	75556	2	Lock Pin Kit
<b>Item 1 75960 Channel Assembly Kit</b>							
9		2	Pivot Channel Assembly	14		2	1/8 x 2-1/16 Hairpin Cotter
10		2	Latch Channel Assembly	ns		2	Latch Pin Slide
11		12	3/8-16 x 1 Hex Cap Screw G5	ns		2	Lock Pin
12		12	3/8-16 Locknut GB	ns		4	3/16 Rivet
13		6	3/8 Flat Washer Type A Narrow	ns		2	Grease Fitting
<b>Item 2 75961 Pivot Bumper Plate Kit</b>							
12		4	3/8-16 Locknut GB	20		1	5/16-18 x 2 Hex Cap Screw G5
13		4	3/8 Flat Washer Type A Narrow	21		1	5/16-18 Locknut GB
18		1	Pivot Bumper Plate, DS	22		8	L-Shim
19		4	3/8-16 x 2-1/4 Carriage Bolt				
<b>Item 3 75962 Latch Bumper Plate Kit</b>							
12		4	3/8-16 Locknut GB	22		8	L-Shim
13		4	3/8 Flat Washer Type A Narrow	23		1	Latch Bumper Plate, PS
19		4	3/8-16 x 2-1/4 Carriage Bolt				
<b>Item 4 75963 Main Pivot Kit</b>							
24		1	Main Pivot	26		2	1/2 Flat Washer
25		1	1/2-13 x 1-1/2 Hex Cap Screw G5	27		1	1/2-13 Locknut GB
<b>Item 5 75964 Latch Bar Kit</b>							
25		2	1/2-13 x 1-1/2 Hex Cap Screw G5	27		2	1/2-13 Locknut GB
26		2	1/2 Flat Washer	28		1	Latch Bar
<b>Item 6 75965 Top Plate Kit – DS</b>							
12		2	3/8-16 Locknut GB	27		2	1/2-13 Locknut GB
13		2	3/8 Flat Washer Type A Narrow	29		1	Top Plate, DS
25		2	1/2-13 x 1-1/2 Hex Cap Screw G5	30		2	3/8-16 x 1-1/2 Hex Cap Screw G5
26		2	1/2 Flat Washer				
<b>Item 7 75966 Top Plate Kit – PS</b>							
12		2	3/8-16 Locknut GB	27		2	1/2-13 Locknut GB
13		2	3/8 Flat Washer Type A Narrow	30		2	3/8-16 x 1-1/2 Hex Cap Screw G5
25		2	1/2-13 x 1-1/2 Hex Cap Screw G5	31		1	Top Plate, PS
26		2	1/2 Flat Washer				
<b>Item 8 75556 Lock Pin Kit</b>							
14		1	1/8 Hairpin Cotter	33		1	Lock Pin
32		1	Latch Pin Slide	34		2	3/16 Rivet
ns = not shown				G = Grade			

Copyright © 2016 Douglas Dynamics, LLC. All rights reserved. This material may not be reproduced or copied, in whole or in part, in any printed, mechanical, electronic, film or other distribution and storage media, without the written consent of the company. Authorization to photocopy items for internal or personal use by the company's outlets or spreader owner is granted.

The company reserves the right under its product improvement policy to change construction or design details and furnish equipment when so altered without reference to illustrations or specifications used. This equipment manufacturer or the vehicle manufacturer may require or recommend optional equipment for spreaders. Do not exceed vehicle ratings with a spreader. The company offers a limited warranty for all spreaders and accessories. See separately printed page for this important information.

Printed in U.S.A.