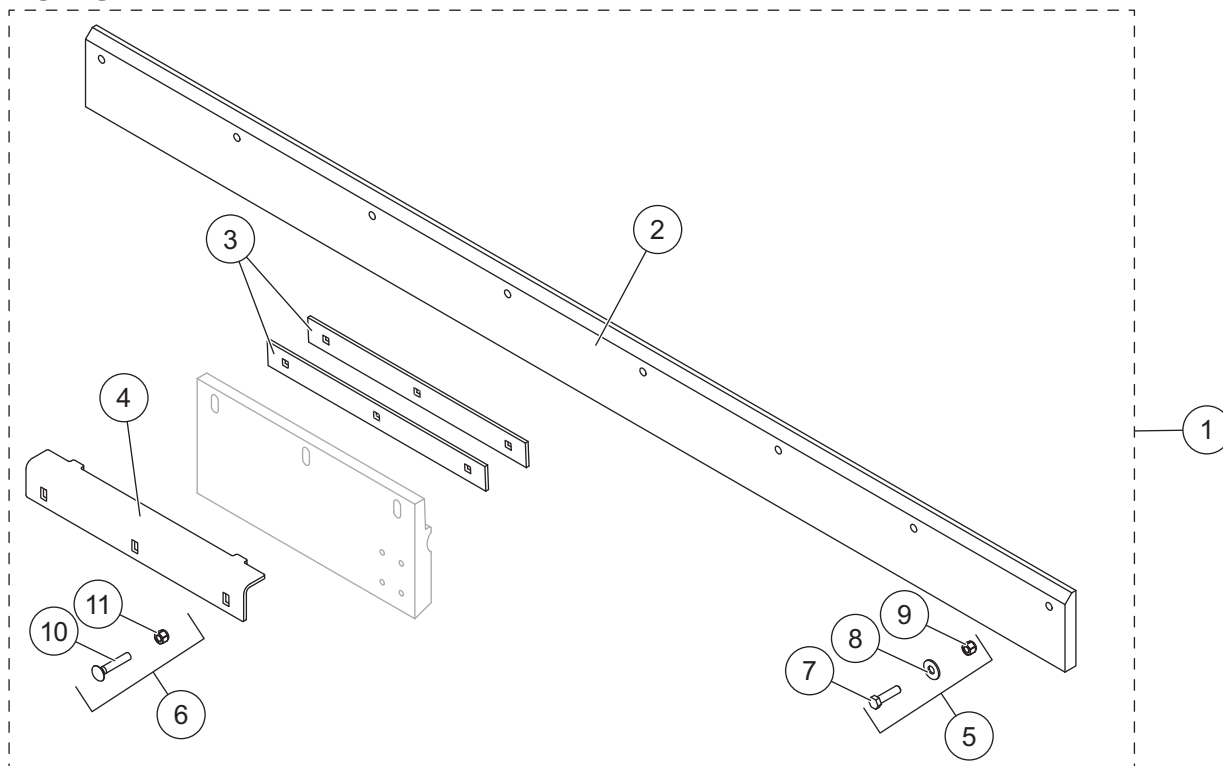


# Polyurethane Cutting Edge Kit

## XLS™ Snowplow‡

## PARTS LIST



<b>81701 / 81702 Polyurethane Cutting Edge Kit – XLS</b>							
<b>Item</b>	<b>Part</b>	<b>Qty</b>	<b>Description</b>	<b>Item</b>	<b>Part</b>	<b>Qty</b>	<b>Description</b>
1	81701	1	Polyurethane Cutting Edge Kit – 810	4	57677	2	Retainer Bar – 810
	81702	1	Polyurethane Cutting Edge Kit – 8611		57678	2	Retainer Bar – 8611
2	22193	1	Poly Blade Edge – 810	5	22217	1	Bolt Bag – Polyurethane Cutting Edge
	51836	1	Poly Blade Edge – 8611	6	81703	1	Bolt Bag – Poly Wing Cutting Edge
3	50640	4	Backer Bar – 810				
	94453	4	Backer Bar – 8611				
<b>Item 5                                  22217 Bolt Bag – Polyurethane Cutting Edge</b>							
7		8	1/2-13 x 2 Hex Cap Screw G5	9		8	1/2-13 Hex Locknut
8		8	1/2 Flat Washer Type A Wide				
<b>Item 6                                  81703 Bolt Bag – Polyurethane Cutting Edge, Wing</b>							
10		6	1/2-13 x 2-3/4 Carriage Bolt	11		6	1/2-13 Hex Locknut GB
G = Grade							

‡ For XLS snowplows with serial numbers beginning with 180210 and higher.

## INSTALLATION INSTRUCTIONS

### **⚠ WARNING**

Do not exceed GVWR or GAWR, including blade and ballast. The rating label is found on the driver-side vehicle door cornerpost.

### **⚠ WARNING**

Blade can drop unexpectedly. Place A-frame on jack stands. Failure to do so could result in serious personal injury.

### **⚠ CAUTION**

Read this document before installing the polyurethane cutting edge kit.

### **⚠ CAUTION**

Use standard methods and practices when attaching snowplow and installing accessories, including proper personal protective safety equipment.

### **⚠ CAUTION**

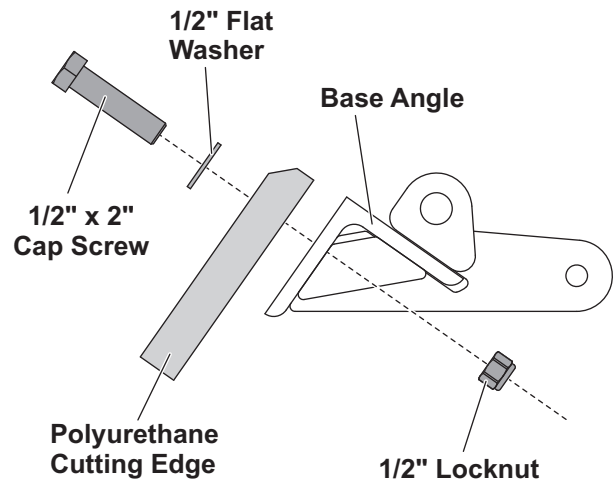
See your FISHER® outlet/website for specific vehicle application recommendations before installation. Polyurethane cutting edge weight information may be found in the eMatch selection system.

1. Park the vehicle on a smooth, level, hard surface, such as concrete.

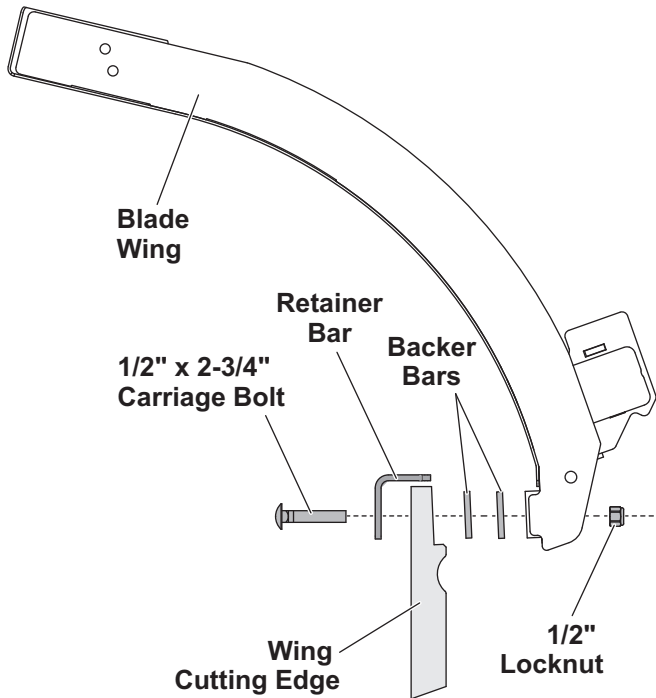
With the blade in the fully retracted position, remove the large Allen head cap screws located at each end of the blade. By removing these you will be able to access the innermost cutting edge fasteners in the following steps.

Raise the blade, fully extend the wings, then turn the control OFF. From the side of the blade assembly, place jack stands under the A-frame.

2. Turn the control ON and lower the blade so the A-frame rests securely on the jack stands. Turn the control OFF. Turn the vehicle ignition to the "OFF" position and remove the key.
3. Remove the existing cutting edge and fasteners from the blade.
4. Insert the supplied 1/2" x 2" cap screws through the 1/2" flat washers, polyurethane cutting edge, and base angle. Install a 1/2" locknut onto each cap screw and torque to 50 ft-lb.



5. Insert three supplied 1/2" x 2-3/4" carriage bolts through a supplied retainer bar, into one of the existing wing cutting edges, through two supplied backer bars and the blade wing. Install a 1/2" locknut onto each carriage bolt and torque to 50 ft-lb. Repeat for the other wing.



6. Turn the vehicle ignition and snowplow control ON. Raise the blade slightly. Retract the wings and reinstall the Allen head cap screws on both sides of the blade. Turn the control OFF and remove the jack stands.
7. Stand 8' clear of the blade, and lower the blade to the ground.
8. Level the A-frame according to the snowplow Installation Instructions or Owner's Manual.

Copyright © 2018 Douglas Dynamics, LLC. All rights reserved. This material may not be reproduced or copied, in whole or in part, in any printed, mechanical, electronic, film, or other distribution and storage media, without the written consent of Fisher Engineering. Authorization to photocopy items for internal or personal use by Fisher Engineering outlets or snowplow owner is granted.

Fisher Engineering reserves the right under its product improvement policy to change construction or design details and furnish equipment when so altered without reference to illustrations or specifications used. Fisher Engineering or the vehicle manufacturer may require or recommend optional equipment for snow removal. Do not exceed vehicle ratings with a snowplow. Fisher Engineering offers a limited warranty for all snowplows and accessories. See separately printed page for this important information. The following are registered (®) or unregistered (™) trademarks of Douglas Dynamics, LLC: FISHER®, XLS™.

**Printed in U.S.A.**