



**Fisher Engineering**

**86866, 86876, 86878, 86881**

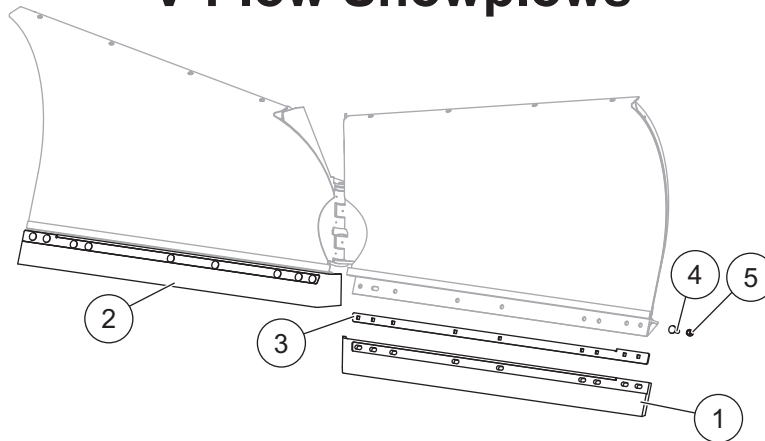
50 Gordon Drive, Rockland, Maine 04841-2139 • www.fisherplows.com

April 15, 2019  
Lit. No. 86844, Rev. 00

# Poly Cutting Edge Kit

## V-Plow Snowplows

### PARTS LIST



86866, 86876, 86878, 86881 Cutting Edge Kit							
Item	Part	Qty	Description	Item	Part	Qty	Description
1	90417	1	Cutting Edge, Poly, 10.5' – DS	3	86862	2	Poly Cutting Edge Bar, 10.5'
	90416	1	Cutting Edge, Poly, 9.5' – DS		86863	2	Poly Cutting Edge Bar, 9.5'
	90414	1	Cutting Edge, Poly, 8.5' – DS		86864	2	Poly Cutting Edge Bar, 8.5'
	90413	1	Cutting Edge, Poly, 7.5' – DS		86843	2	Poly Cutting Edge Bar, 7.5'
2	90431	1	Cutting Edge, Poly, 10.5' – PS	ns	86890	1	Bolt Bag (10.5')
	90433	1	Cutting Edge, Poly, 9.5' – PS	ns	86852	1	Bolt Bag (7.5', 8.5', 9.5')
	90437	1	Cutting Edge, Poly, 8.5' – PS				
	90438	1	Cutting Edge, Poly, 7.5' – PS				
<b>86890 Bolt Bag (10.5')</b>							
4		18	5/8-11 x 2-1/2 Carriage Bolt G5	5		18	5/8-11 Hex Locknut GB
<b>86852 Bolt Bag (7.5', 8.5', 9.5')</b>							
4		14	5/8-11 x 2-1/2 Carriage Bolt G5	5		14	5/8-11 Hex Locknut GB
ns = not shown				G = Grade			

#### ⚠ WARNING

Do not exceed GVWR or GAWR, including blade and ballast. The rating label is found on the driver-side vehicle door cornerpost.

#### ⚠ CAUTION

Read this document before installing the poly cutting edge kit.

#### ⚠ CAUTION

Use standard methods and practices when attaching snowplow and installing accessories, including proper personal protective safety equipment.

#### ⚠ CAUTION

See your FISHER® outlet/website for specific vehicle application recommendations before installation. The eMatch selection system has specific vehicle and snowplow requirements.

## INSTALLATION INSTRUCTIONS

### **⚠ WARNING**

Do not exceed GVWR or GAWR, including blade and ballast.

### **⚠ WARNING**

Blade can drop unexpectedly. Place T-frame on jack stands. Failure to do so could result in serious personal injury.

### **⚠ CAUTION**

Read this document before installing the poly cutting edge kit.

### **⚠ CAUTION**

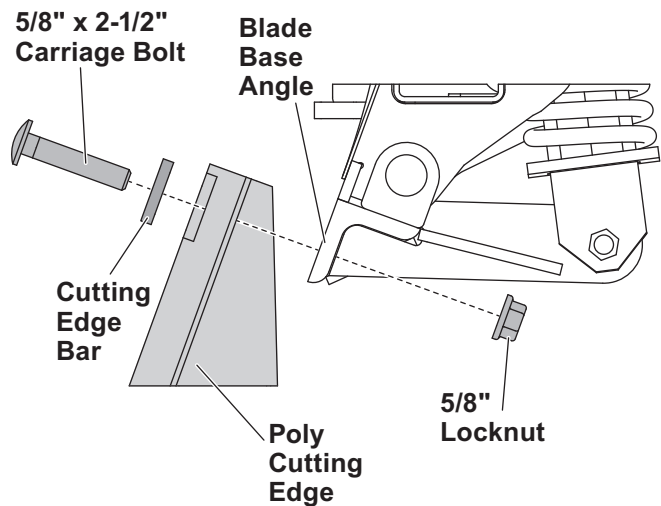
Use standard methods and practices when attaching snowplow and installing accessories, including proper personal protective safety equipment.

### **⚠ CAUTION**

See your sales outlet/website for specific vehicle application recommendations before installation. The online selection system has specific vehicle and snowplow requirements.

1. Park the vehicle on a smooth, level, hard surface, such as concrete. Raise the blade and adjust it into the V position. Turn the control OFF.
2. From the side of the blade assembly, place jack stands under the T-frame.

3. Turn the control ON and lower the blade so that the T-frame rests securely on the jack stands. Turn the control OFF. Turn the vehicle ignition to the "OFF" position and remove the key.
4. Remove the existing blade cutting edges, center cutting edges, and curb guards and fasteners from the blade.
5. Insert the supplied 5/8" x 2-1/2" carriage bolts through the cutting edge bar, cutting edge, and blade base angle. Install a 5/8" locknut onto each carriage bolt and tighten to 50 ft-lb.



6. Repeat Steps 4 and 5 on the other side.
7. Turn the vehicle ignition and snowplow control ON. Raise the blade slightly. Turn the control OFF and remove the jack stands.
8. Stand 8 feet clear of the blade, and lower the blade to the ground.

Copyright © 2019 Douglas Dynamics, LLC. All rights reserved. This material may not be reproduced or copied, in whole or in part, in any printed, mechanical, electronic, film, or other distribution and storage media, without the written consent of Fisher Engineering. Authorization to photocopy items for internal or personal use by Fisher Engineering outlets or snowplow owner is granted.

Fisher Engineering reserves the right under its product improvement policy to change construction or design details and furnish equipment when so altered without reference to illustrations or specifications used. Fisher Engineering or the vehicle manufacturer may require or recommend optional equipment for snow removal. Do not exceed vehicle ratings with a snowplow. Fisher Engineering offers a limited warranty for all snowplows and accessories. See separately printed page for this important information. The following is a registered (®) trademark of Douglas Dynamics, LLC: FISHER®.

Printed in U.S.A.