

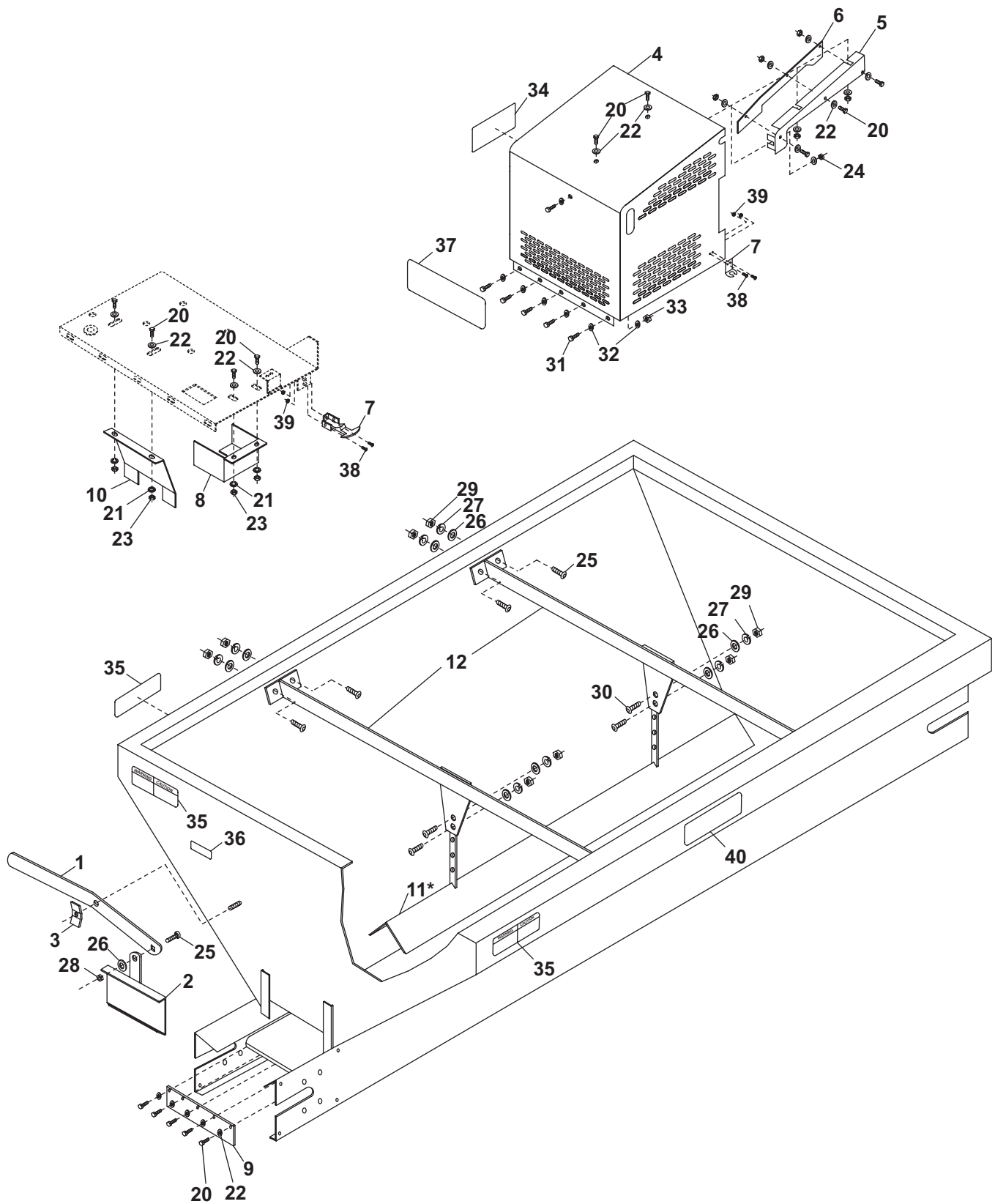
November 15, 2000
Lit. No. 94639



Body Components Parts List for Hopper Spreaders

This parts list is for FISHER® Hopper Spreaders with serial numbers
4809 and higher.

Body Components Parts List



Body Components Parts List

Body Components Parts List							
Item	Part	Qty	Description	Item	Part	Qty	Description
1	9232	1	Feed Gate Lever – Regular Capacity Mild Steel	6	94532	1	Engine Cover Baffle Extension
1	20099	1	Feed Gate Lever – Regular Capacity Stainless Steel	7	9172	2	Strap, Rubber Hold Down
1	20344	1	Feed Gate Lever – High Capacity Mild Steel	8	68361	1	Sprocket Guard
1	68984	1	Feed Gate Lever – High Capacity Stainless Steel	9	9167	1	Wiper Belt – Regular Capacity
2	68408	1	Feed Gate – Regular Capacity Mild Steel	9	20328	1	Wiper Belt – High Capacity
2	68409	1	Feed Gate – Regular Capacity Stainless Steel	10	68355	1	Spinner Chain Guard Regular Capacity Mild Steel
2	68410	1	Feed Gate – High Capacity Mild Steel	10	68364	1	Spinner Chain Guard Regular Capacity Stainless Steel
2	68985	1	Feed Gate - High Capacity Stainless Steel	10	68386	1	Spinner Chain Guard High Capacity Mild Steel
3	9231	1	Wing Nut – Mild Steel	10	94316	1	Spinner Chain Guard High Capacity Stainless Steel
3	20098	1	Wing Nut – Stainless Steel	11*	65663	1	Inverted Vee 8' High Capacity Mild Steel
4	68373	1	Engine Cover with labels Regular Capacity Mild Steel	11*	65665	1	Inverted Vee 10' High Capacity Mild Steel
4	68499	1	Engine Cover with labels Regular Capacity Stainless Steel	11*	68988	1	Inverted Vee 8' High Capacity Stainless Steel
4	9281	1	Engine Cover with labels High Capacity Mild Steel	11*	68989	1	Inverted Vee 10' High Capacity Stainless Steel
4	94359	1	Engine Cover with labels High Capacity Stainless Steel	12	20165	2	Inverted Vee Support
5	94522	1	Engine Cover Baffle				

* = Regular Capacity Inverted Vees available as accessories.

Body Components Parts List

Body Components Parts List – Hardware							
Item	Part	Qty	Description	Item	Part	Qty	Description
20	90461	9	1/4"-20 x 3/4" Hex Cap Screw Zinc Plated	28	90986	1	3/8"-16 Jam Locknut Zinc Plated
20	91012	15	1/4"-20 x 3/4" Hex Cap Screw Stainless Steel	28	90999	1	3/8"-16 Jam Locknut Stainless Steel
21	90359	9	1/4" Lock Washer Zinc Plated	29	90334	12	3/8"-16 Hex Nut Zinc Plated
21	91017	9	1/4" Lock Washer Stainless Steel	29	91008	12	3/8"-16 Hex Nut Stainless Steel
22	90311	5	1/4" Plain Washer Zinc Plated	30	90966	4	3/8"-16 x 1-1/2" Carriage Bolt Zinc Plated
22	91013	11	1/4" Plain Washer Stainless Steel	30	68345	4	3/8"-16 x 1-1/2" Carriage Bolt Stainless Steel
23	90330	9	1/4"-20 Hex Nut Zinc Plated	31	90974	5	5/16"-18 x 3/4" Hex Cap Screw Stainless Steel
23	91019	9	1/4"-20 Hex Nut Stainless Steel	32	90980	10	5/16" Plain Washer Stainless Steel
24	67076	6	1/4" Hex Locknut Stainless Steel	33	90987	5	5/16"-18 Hex Locknut Stainless Steel
25	90965	9	3/8"-16 x 1" Carriage Bolt Zinc Plated	34	9131	1	Label – Warning, Gasoline
25	91023	9	3/8"-16 x 1" Carriage Bolt Stainless Steel	35	68595	3	Label – Warning/Caution
26	90315	2	3/8" Plain Washer Zinc Plated	36		1	Label – Serial Number
26	91006	2	3/8" Plain Washer Stainless Steel	37	20724	1	Label – Identity – Fisher
27	90361	12	3/8" Lock Washer Zinc Plated	38	67092	8	#10-24 x 1/2" Socket Button Head Cap Screw Stainless Steel
27	91007	12	3/8" Lock Washer Stainless Steel	39	91330	8	#10-24 Hex Locknut Stainless Steel

Copyright© 2000 Douglas Dynamics, L.L.C. All rights reserved. This material may not be reproduced or copied, in whole or in part, in any printed, mechanical, electronic, film or other distribution and storage media, without the written consent of Fisher Engineering. Authorization to photocopy items for internal or personal use by Fisher Engineering outlets is granted.

Fisher Engineering reserves the right under its product improvement policy to change construction or design details and furnish equipment when so altered without reference to illustrations or specifications used herein. Fisher Engineering and the vehicle manufacturer may require and/or recommend optional equipment for hopper spreaders. Fisher Engineering offers a limited warranty for all hopper spreaders and accessories. See separately printed page for this important information. The following is a registered® trademark of Douglas Dynamics, L.L.C.: FISHER®.

Printed in USA