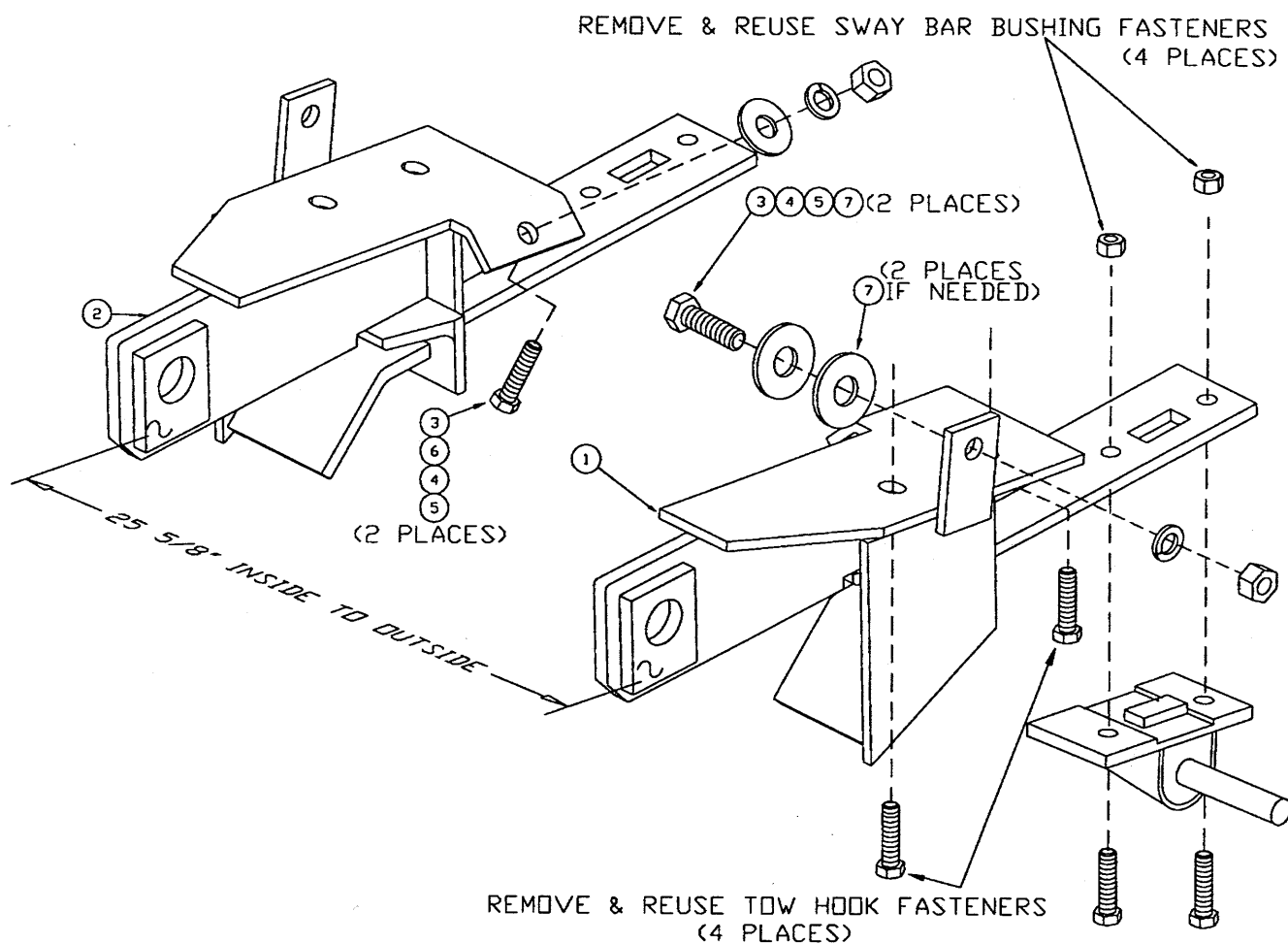


CHEV/GMC
S-10, SONOMA w/o ZR2
S-10, Blazer, Jimmy

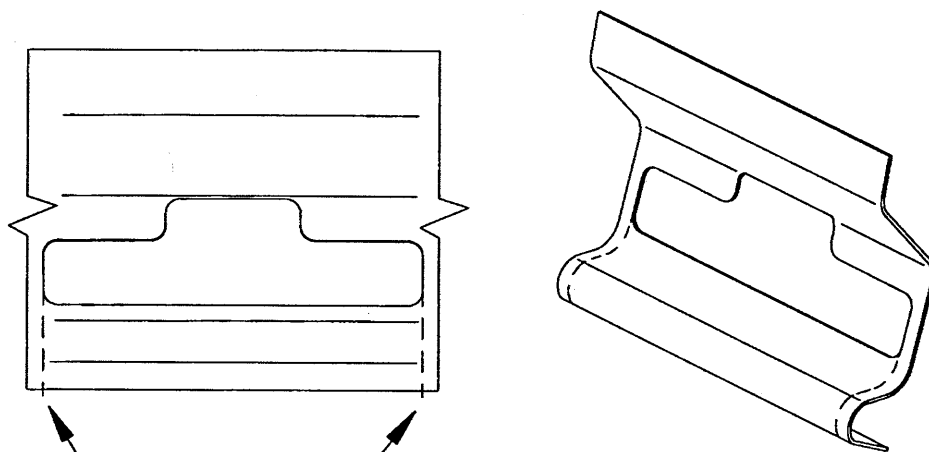
1994-1996
1995-1996



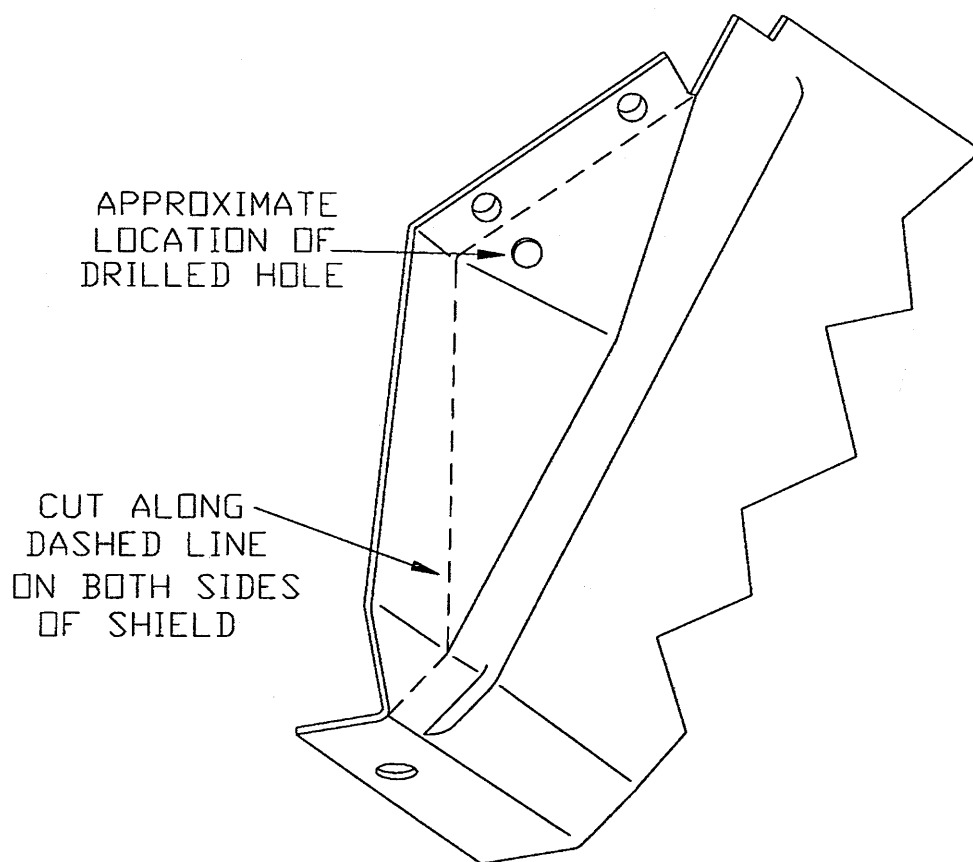
Parts List

Ref #	Qty	Part #	Description	Ref #	Qty	Part #	Description
1	1	8894	Pushplate - Driver Side	6	2	*90319	1/2" Flat Washer
2	1	8895	Pushplate - Passenger Side	7	4	*90323	5/8" Flat Washer
3	4	*90575	1/2"-13 x 1-1/4" (NC) Gr. 5 Cap screw	8	1	*8290	Panel Mount Plate Set--Long (not shown)
4	4	*90364	1/2" Lock Washer	9	8	*8324	Cable Ties--long (not shown)
5	4	*90337	1/2" Nut (NC)	10	1	21077	License Plate Bracket

* Part of 8900 Bolt Bag



CUT ALONG DASHED LINES
ON BOTH PASS. & DRIV. SIDES
OF AIR DAM






CUT ALONG
DASHED LINE
ON BOTH SIDES
OF SHIELD

APPROXIMATE
LOCATION OF
DRILLED HOLE

Note: To insure proper fit of attachments and alignment of "connecting pin arms", do not fully tighten any fasteners until instructed to do so.

Installation Instructions

1. Remove the splash shield, tow hooks and license plate bracket. Discard the license plate bracket, but save all of the fasteners.
2. Cut the sections of the air dam as shown in the illustration on page 2. Detach the driver-side sway bar from the frame and save the fasteners. Pry down on the sway bar and place the rear tab of the driver-side pushplate (1) in between the sway bar mount and the frame. Reinstall the fasteners. **Do not tighten fasteners at this time.** Switch sides of the tow hooks, so the hook points upward (passenger-side tow hook on the driver side and driver side on passenger side). Reinstall the fasteners through the driver-side pushplate (1), frame and into the threaded holes in the tow hook. Repeat the same as above for the passenger-side pushplate (2).
3. Using the hole in the side and top most plate as a guide, drill one 17/32" hole through the frame on one pushplate. Install one 1/2" x 1-1/4" cap screw (3) out through the frame and pushplate. Place one 5/8" flat washer (7) between the frame and the plate as a spacer. Fasten with a 1/2" lock washer (4) and 1/2" nut (5). Repeat for the other pushplate. **Do not tighten fasteners.**
4. Measure the distance between the inside front connecting holes on the pushplates; it should be 25-5/8" inside to outside. To obtain the 25-5/8" inside to outside, add 5/8" flat washer(s) (7) between the frame and the side tab of each pushplate as spacers. To ensure the arms are parallel, a second measurement must be taken farther back on the arms. This measurement must be the same as the first. **Tighten all fasteners.**
5. Cut the splash shield as illustrated. Slide it into the original position above the inside tabs on the pushplates. Using the holes in the inside tabs on the pushplates as guides, mark the holes on the shield and drill two 17/32" holes for each side in the shield. Reinstall the shield using the fasteners saved in Step 1 on the rear of the shield. Through the drilled holes, fasten with two 1/2" x 1 1/4" cap screws (3), flat washers (6), lock washers (4) and nuts (5). **Tighten.**
6. Install the license plate bracket (10) using the fasteners previously removed.

NC FASTENER TORQUE (FT-LB)			
DIAMETER- THREADS PER INCH	GRADE		
			
1/4 - 20	6	9	13
5/16 - 18	11	18	28
3/8 - 16	19	31	46
7/16 - 14	30	50	75
1/2 - 13	45	75	115
9/16 - 12	66	110	165
5/8 - 11	93	150	225
3/4 - 10	150	250	370
7/8 - 9	150	378	59*
1 - 8	220	583	893

