



Fisher Engineering

P.O. Box 529 Rockland, Maine 04841

September 1, 2005
Lit. No. 26202, Rev. 02



MOUNT KIT

International 4700/4800/4900

1989 - 00

(Kit only fits vehicles equipped with 3 x 50" or 3 x 54" front springs.)

Installation Instructions

⚠ CAUTION

Read this document before installing the snowplow.

⚠ CAUTION

See your FISHER® outlet for application recommendations. The Kit Selection Guide has specific vehicle and snowplow requirements.

SAFETY DEFINITIONS

⚠ WARNING

Indicates a potentially hazardous situation that, if not avoided, could result in death or serious personal injury.

⚠ CAUTION

Indicates a potentially hazardous situation that, if not avoided, could result in damage to product or property.

NOTE: Identifies tips, helpful hints, and maintenance information the owner/operator should know.

SAFETY PRECAUTIONS

Improper installation and operation could cause personal injury, and/or equipment and property damage. Read and understand labels and the Owner's Manual before installing, operating, or making adjustments.

⚠ WARNING

Lower blade when vehicle is parked. Temperature changes could change hydraulic pressure, causing the blade to drop unexpectedly or damaging hydraulic components. Failure to do this can result in serious personal injury.

⚠ WARNING

Remove blade assembly before placing vehicle on hoist.

⚠ WARNING

The driver shall keep bystanders clear of the blade when it is being raised, lowered or angled. Do not stand between the vehicle and the blade or within 8 feet of a moving blade. A moving or falling blade could cause personal injury.

⚠ WARNING

Keep hands and feet clear of the blade and A-frame when mounting or removing the snowplow. Moving or falling assemblies could cause personal injury.

⚠ WARNING

Do not exceed GVWR or GAWR including blade and ballast. The rating label is found on driver-side vehicle door cornerpost.

⚠ CAUTION

Refer to the Kit Selection Guide for minimum vehicle recommendations and ballast requirements.

⚠ CAUTION

To prevent accidental movement of the blade, always turn the ON/OFF switch to OFF whenever the snowplow is not in use. The control indicator light will turn off.

PERSONAL SAFETY

- Wear only snug-fitting clothing while working on your vehicle or snowplow.
- Do not wear jewelry or a necktie, and secure long hair.
- Wear safety goggles to protect your eyes from battery acid, gasoline, dirt and dust.
- Avoid touching hot surfaces such as the engine, radiator, hoses and exhaust pipes.
- Always have a fire extinguisher rated BC handy, for flammable liquids and electrical fires.

FIRE AND EXPLOSION

WARNING

Gasoline is highly flammable and gasoline vapor is explosive. Never smoke while working on a vehicle. Keep all open flames away from gasoline tanks and lines. Wipe up any spilled gasoline immediately.

Be careful when using gasoline. Do not use gasoline to clean parts. Store only in approved containers away from sources of heat or flame.

VENTILATION




WARNING

Vehicle exhaust contains deadly carbon monoxide (CO) gas. Breathing this gas, even in low concentrations, could cause death. Never operate a vehicle in an enclosed area without venting exhaust to the outside.

TORQUE CHART

CAUTION

Read instructions before assembling. Fasteners should be finger tight until instructed to tighten according to the torque chart. Use standard methods and practices when attaching snowplow including proper personal protective safety equipment.

Recommended Fastener Torque Chart (Ft.-Lb.)			
Size	 SAE Grade 2	 SAE Grade 5	 SAE Grade 8
1/4-20	6	9	13
5/16-18	11	18	28
3/8-16	19	31	46
3/8-24	24	46	68
7/16-14	30	50	75
1/2-13	45	75	115
9/16-12	66	110	165
5/8-11	93	150	225
3/4-10	150	250	370
7/8-9	150	378	591
1-8	220	583	893
Metric Grade 8.8 (Ft.-Lb.)			
Size	Torque	Size	Torque
M 6	7	M 12	60
M 8	17	M 14	95
M 10	35	M 16	155
These torque values apply to fasteners except those noted in the instruction.			

INSTALLATION INSTRUCTIONS

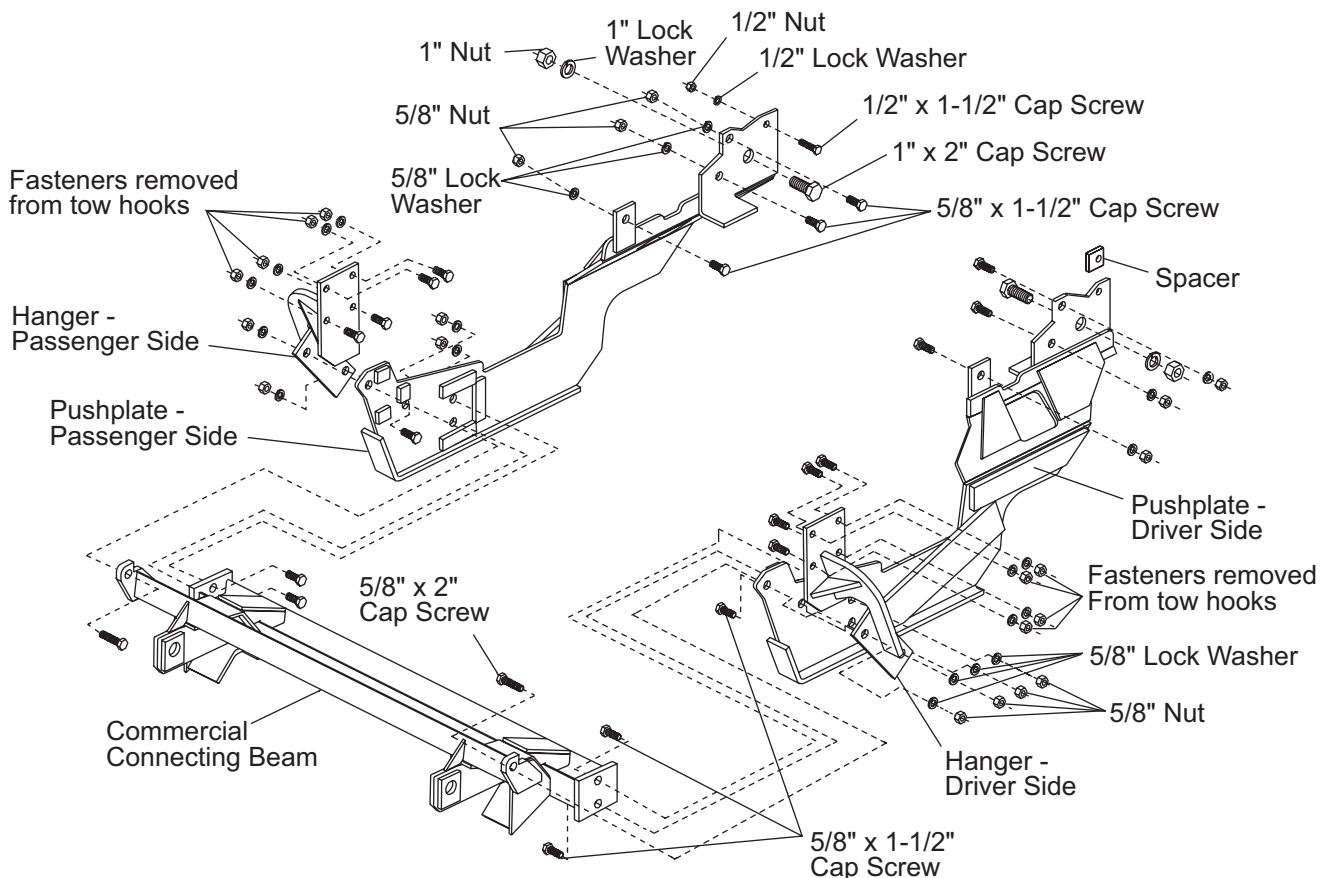
NOTE: To ensure proper fit of attachments do not fully tighten any fasteners until told to do so.

- Turn front wheels all the way to the left. Remove and save the two nuts from the driver-side brake line bracket.
- Relocate the ABS brake wire if present to prevent cutting or chafing the wire.
- Install the driver-side pushplate on the outer side of the leaf spring and on the inner side of the steering arm. Hold the rear of the pushplate under the frame. Reinstall the brake line bracket and spacer to the top brake line bracket bolt. Attach nuts to bracket, but do not tighten any fasteners at this time. Install one 5/8" x 1-1/2" cap screw, 5/8" lock washer and 5/8" nut on rear angle. Install one 1" x 2" cap screw, lock washer and nut on rear angle.

7151-2

- Repeat on passenger-side pushplate and add a 1/2" x 1-1/2" cap screw, 1/2" lock washer and 1/2" nut in the rear angle where the brake line bracket is on the driver side.
- Remove the bumper and both tow hooks. Install the driver-side and passenger-side hanger with fasteners removed from tow hooks. Install a 5/8" x 1-1/2" cap screw, 5/8" lock washer and 5/8" nut in the lower hanger on both sides.
- Place the commercial connecting beam between the pushplates. Install one 5/8" x 2" cap screw to the upper, front plate and hanger. Install two 5/8" x 1-1/2" cap screws through the lower rear plate on both sides.
- Secure with 5/8" lock washers and 5/8" nuts. Tighten all fasteners.
- Drill two 5/8" holes on each side of the frame. Use the holes on the pushplate rear angle and the tab forward of the rear angle as guides. Check in back of the frame for any wires and lines. Install four 5/8" x 1-1/2" cap screws, 5/8" lock washers and 5/8" nuts. Tighten fasteners.
- Reinstall the bumper.

NOTE: After five to ten hours of snowplow usage, retorque all pushplate assembly fasteners.



Fisher Engineering reserves the right under its product improvement policy to change construction or design details and furnish equipment when so altered without reference to illustrations or specifications used. Fisher Engineering and the vehicle manufacturer may require and/or recommend optional equipment for snow removal. Do not exceed vehicle ratings with a snowplow. Fisher Engineering offers a limited warranty on the snowplows and accessories. See separately printed page for this important information. The following are registered (®) trademarks of Douglas Dynamics, L.L.C.: FISHER®, Minute Mount® 2.

Printed in U.S.A.