

Headgear, A-frame, and Blade Installation Instructions

Table of Contents

Safety Information	2
Blade and A-frame	3
Center Deflector	3
Lower Gear/Headgear Assembly	5
Lift Arm, Lift Cylinder and Lift Chain Installation	7
Push Assembly	7
EZ-V Snowplow Components	8

⚠ CAUTION

Read this manual before installing or operating
the snowplow.

ASSEMBLY INSTRUCTIONS

Safety Information

Read this manual and labels on the snowplow before installing or operating the snowplow.

WARNING

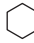


Indicates a potentially hazardous situation that, if not avoided, could result in death or serious personal injury.

CAUTION

Indicates a situation that, if not avoided, could result in minor personal injury and/or damage to product or property.

NOTE: Identifies tips, helpful hints and maintenance information the reader should know.

Torque all fasteners according to the torque chart. For proper fit, do not tighten fasteners until instructed to do so.

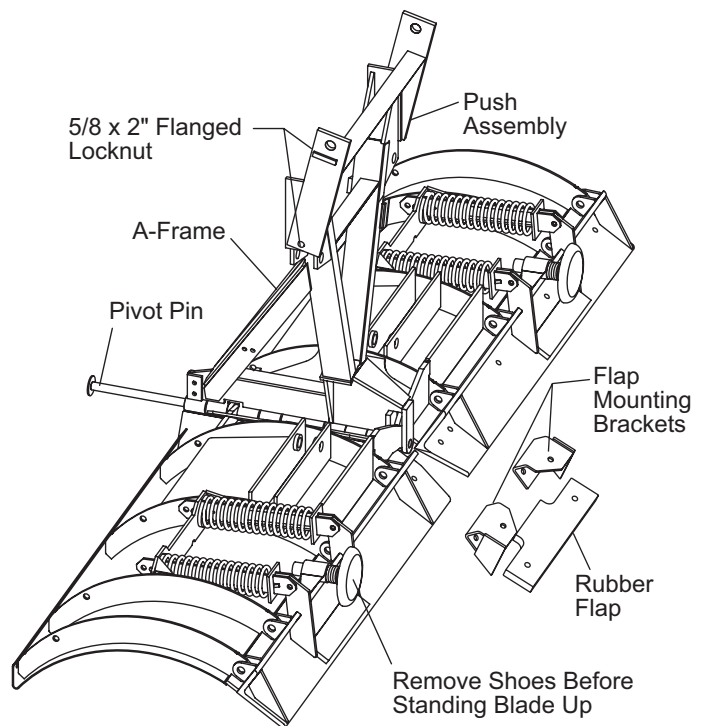
NC FASTENER TORQUE (FT-LB)			
DIAMETER- THREADS PER INCH	GRADE		
			
	G2	G5	G8
1/4 - 20	6	9	13
5/16 - 18	11	18	28
3/8 - 16	19	31	46
7/16 - 14	30	50	75
1/2 - 13	45	75	115
9/16 - 12	66	110	165
5/8 - 11	93	150	225
3/4 - 10	150	250	370
7/8 - 9	150	378	591
1 - 8	220	583	893

ASSEMBLY INSTRUCTIONS

Blade and A-frame

1. Place some cardboard or wood supports on the floor where the blade will be assembled. Remove the blade halves from the pallet. Place face down on the cardboard or wood with the hinges facing each other. Push the blade halves together so that the holes in the hinges are aligned.
2. Insert the A-frame assembly between the blade halves so the flat hinges on the A-frame straddle the flat hinges on the blade. Slide the pivot pin through all the hinges once all the hinge holes are aligned. Install a 1/4" x 2" slotted spring pin through the bottom of the pivot pin.
3. Install the push assembly to the outside of the A-frame ears with the flat side of the crossmember center angle up. Install two 5/8" x 2" Gr. 8 flanged cap screws into the front holes of the push assembly and A-frame from the outside. Secure with two 5/8" Gr. 8 flanged nuts. Tighten the two fasteners until snug. Do not torque at this time. The rear holes in push assembly will be drilled later.
4. Remove shoes and stand the blade up.
5. Install the flap mounting brackets on the back of each base angle with four 1/2" x 2" cap screws. Insert the cap screws through the front of the base angle and through the flap mounting brackets. Secure with 1/2" locknuts. Install the rubber flap on the inside of the mounting brackets with four

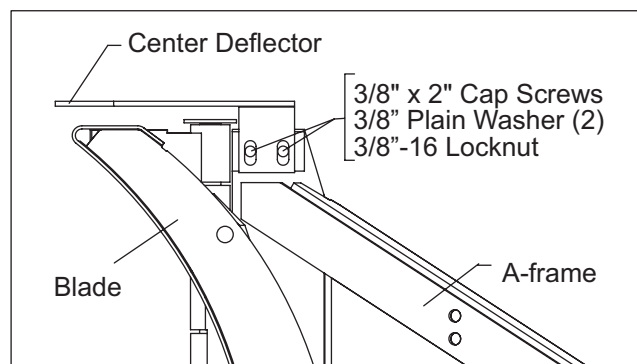
8-1/2' Blade Shown



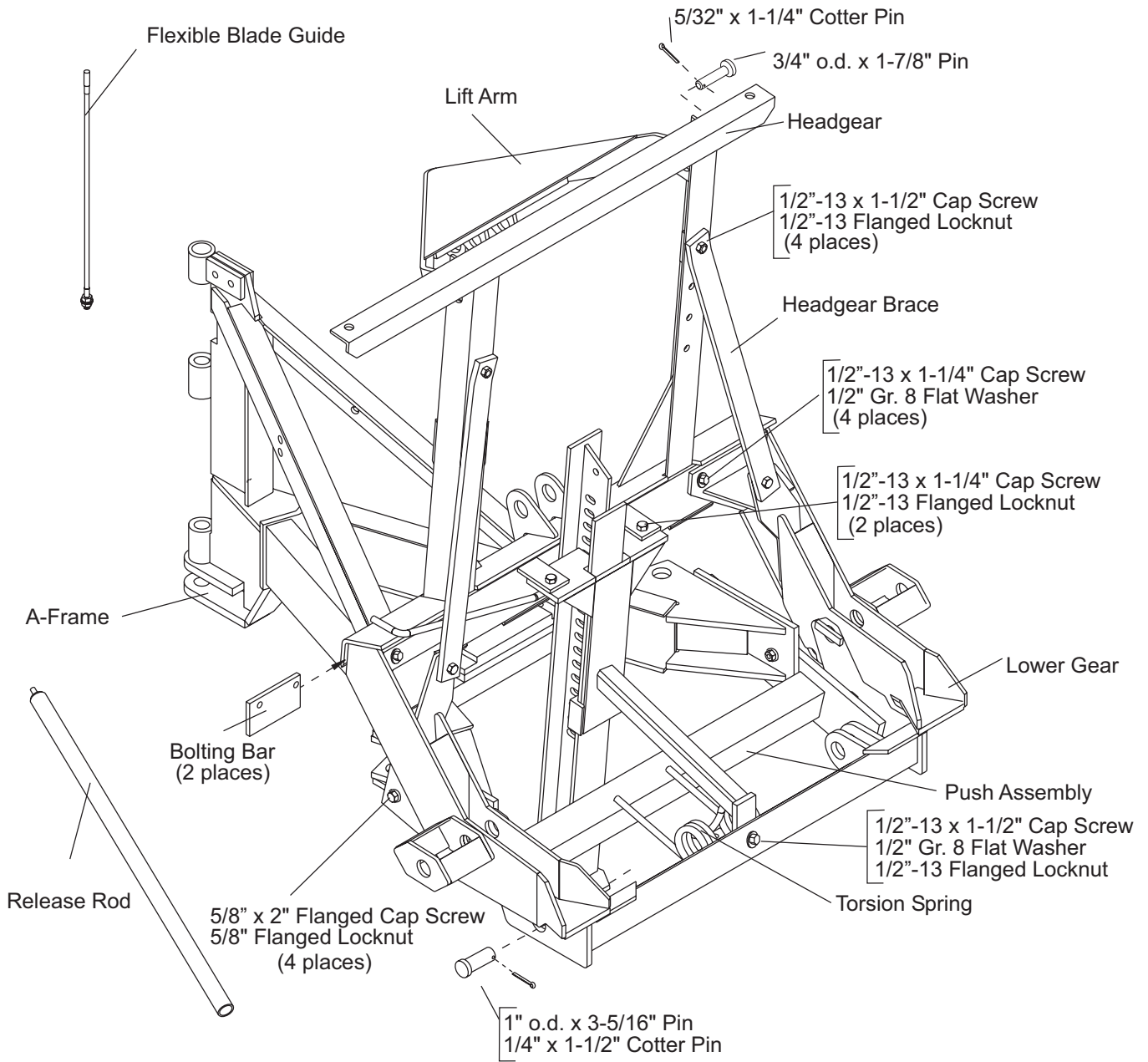
washers and two 1/2" x 2-1/2" cap screws. Insert washer onto cap screw then insert cap screw through rubber flap and mounting bracket. Place washer on end of cap screw and secure with 1/2" locknut. Tighten the locknut until the washer slightly deforms the rubber flap surface.

Center Deflector

1. Slide the center deflector into place over the top of the hinge.
2. Fasten the center deflector to the A-frame using two 3/8" x 2" Gr. 5 cap screws, four 3/8" plain washers (two on each side of deflector) and two 3/8" locknuts.
3. Allow 1/2" clearance between the blade and the center deflector. Torque the two 3/8" fasteners on the center deflector to 31 ft.-lb.
4. Install the blade guides on each end of the top of blade.

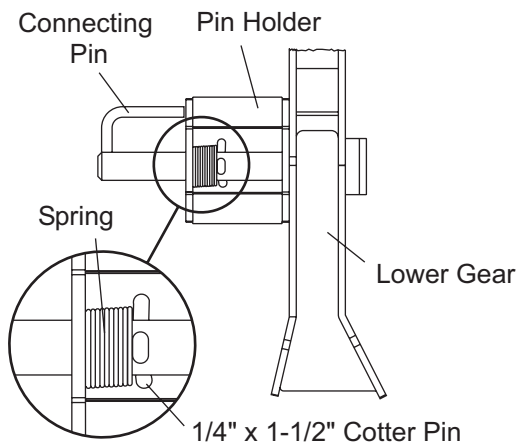


ASSEMBLY INSTRUCTIONS



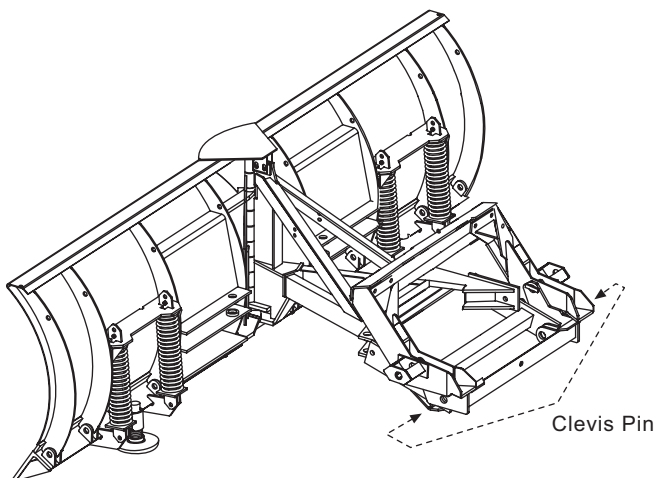
Lower Gear/Headgear Assembly

1. To assemble connecting pins to lower gear, insert springs in pin holders. Then insert the connecting pin through all three holes with the pin handles away from vehicle. Position cotter pin hole flush with inside plate. Pull back on the spring and install $1/4 \times 1-1/2$ " cotter pins. **Bend both legs of cotter pins around connecting pins for proper clearance.**

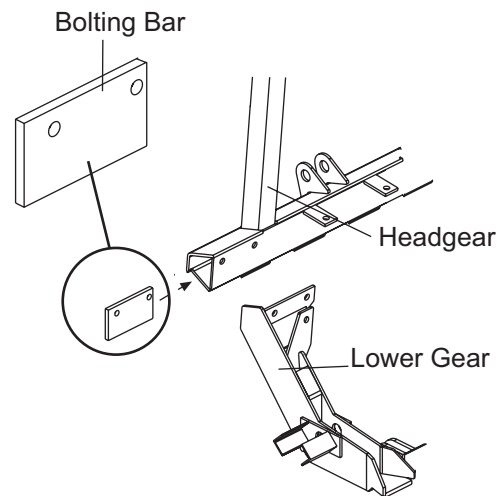


2. Align holes in lower gear assembly with rear holes in the push assembly. Insert $1 \times 3-5/16$ " clevis pins through ears, from the **outside to the inside** of the headgear. Secure with two $1/4 \times 1-1/2$ " cotter pins.

8-1/2' Blade Shown



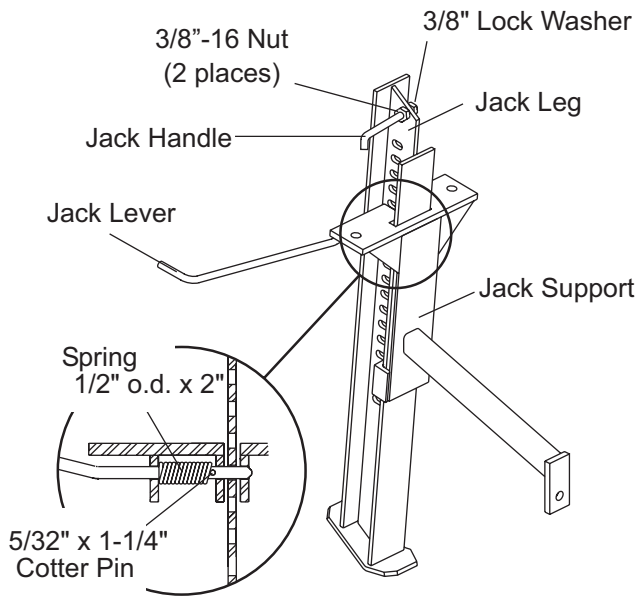
3. Attach headgear to lower gear. Position bolting bar inside headgear as shown below. Place headgear on front end of lower gear. Insert four $1/2 \times 1-1/4$ " cap screws with Gr. 8 flat washers through the holes in lower gear and bolting bar. Do not fully tighten.



NOTE: Use a 6" piece of $1/2$ " threaded rod to hold each bolting bar in place and to align headgear to lower gear. Thread into tapped hole after sliding bolting bar in place.

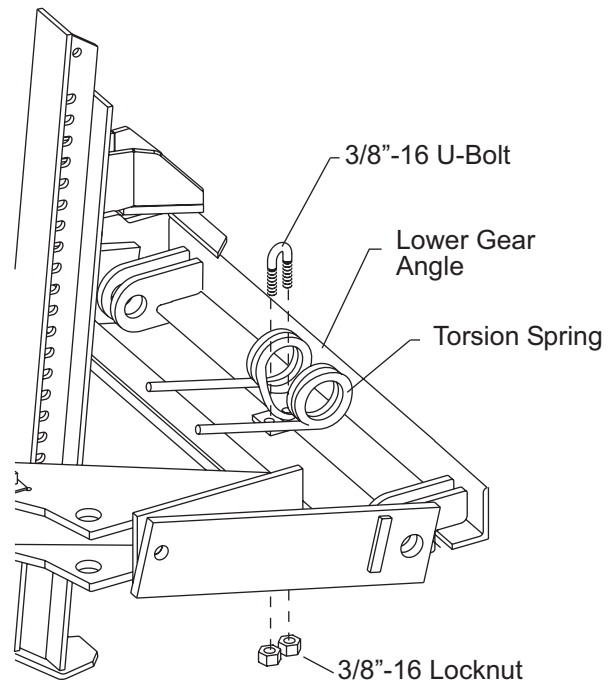
4. Ensure the A-frame cross member is parallel to the blade. Add wood blocking under A-frame crossmember until A-frame is parallel to ground.
5. Insert jack lever through the three holes on jack support to clean out paint before assembling. Place jack lever spring between ear and guide on jack support. Insert the jack lever through ear until cotter pin hole is flush with jack guide. Pull back on spring and install $5/32 \times 1-1/4$ " cotter pin.

ASSEMBLY INSTRUCTIONS

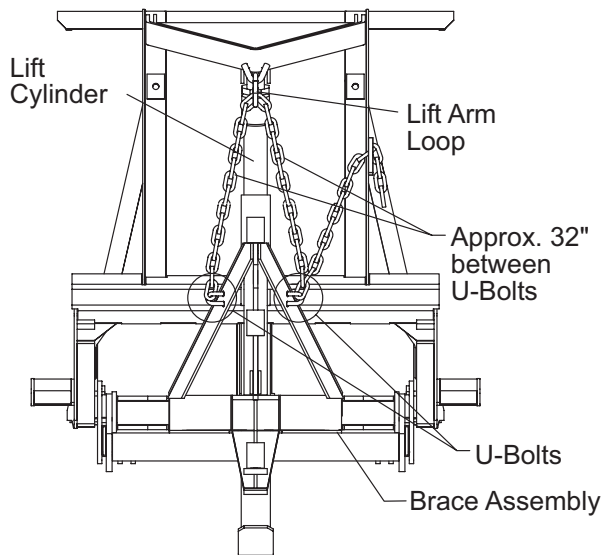


6. Insert jack leg up through jack support and engage jack lever when four slots are visible. Install one 3/8" nut on jack handle and insert into top round hole on jack leg. Fasten with one 3/8" lock washer and nut.
7. Attach jack support assembly to tabs on rear of headgear. Use two 1/2" x 1-1/4" cap screws and flanged locknuts. Attach the jack support stiffener to the lower gear beam with one 1/2" x 1-1/2" cap screw, Gr. 8 flat washer, and flanged locknut.
8. Install headgear braces to each side of headgear and of lower gear tab. Top end of brace is bent and bottom of brace is installed on rear of tab. Fasten with four 1/2" x 1-1/2" cap screws and flanged locknuts. Do not fully tighten.

9. Tighten all fasteners on headgear/lower gear assembly.
10. Pivot the upper and lower gear assembly away from the blade. Place torsion spring in center of the lower gear angle. Place 3/8" U-bolt over the loop of spring, through holes in the angle and the tab under the angle. Fasten with two 3/8" locknuts. Tighten both down evenly.



Lift Arm, Lift Cylinder and Lift Chain Installation



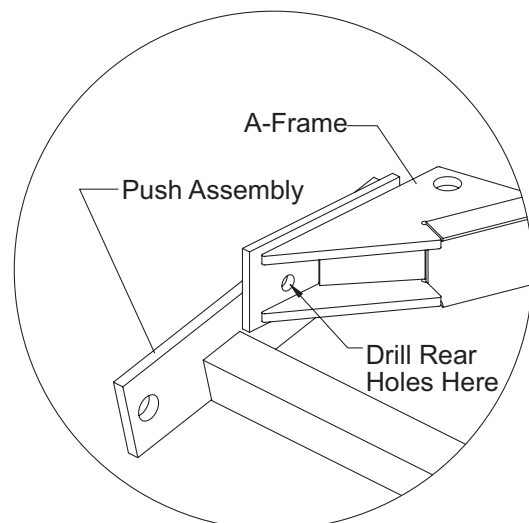
1. Install the lift arm with two 3/4 x 1-7/8" machine pins and 5/32 x 1-1/4" cotter pins. Attach the lift cylinder to the lift arm and lower cross member of headgear with 1" x 3-5/16" clevis pins and cotter pins.
2. Slide the chain through the loop on lift arm. Attach one end of the lift chain to the passenger side of the brace assembly using the enclosed U-bolt.
3. Attach the chain to the driver side of the brace assembly with a U-bolt. The loose end is approximately 32 inches. Do not tighten U-bolts at this time.

Push Assembly

NOTE: The vehicle is needed to complete the installation. Do all necessary installation to the vehicle at this time, if not already done. Add ballast and equip vehicle as it will be used to plow snow.

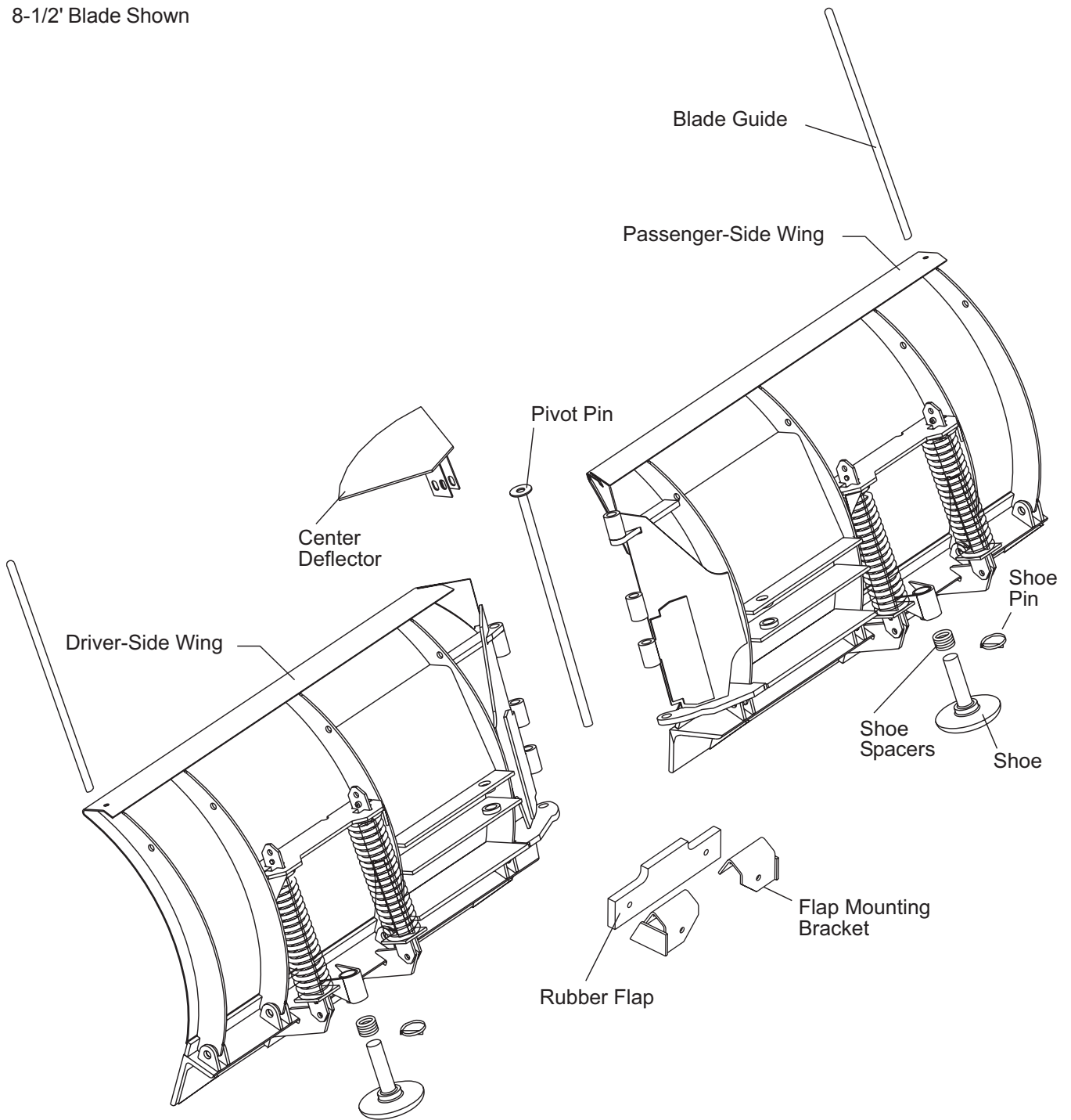
1. Attach the snowplow to the vehicle according to the label on the back of the blade. Manually retract the blade to the "vee" position. Remove shoes.
2. Make sure the cutting edges/base angles are level on the floor. Tighten the two 5/8" fasteners holding the push assembly to the A-frame. Using the rear holes on the A-frame as a guide, mark the location of the holes to be drilled on the push assembly.
3. Disconnect the unit from the truck, according to the instructions on the back of the blade.
4. Drill the rear holes in the push assembly. Fasten with two 3/4 x 2" Gr. 8 flange head cap screws and two flanged locknuts. The rear holes in the A-frame will need to be drilled out to accept the 3/4" cap screw.

5. **For 9-1/2' EZ-V snowplows:** Blade Stop Installation: Follow the instructions in the 26634 Blade Stop Kit.
6. Make sure all flanged bolts (Gr. 8) and nuts (Gr. 8) on the A-frame are fastened to the proper torque. Torque the 5/8" fasteners to 225 ft.-lb. Torque 3/4" fasteners to 370 ft. lbs.

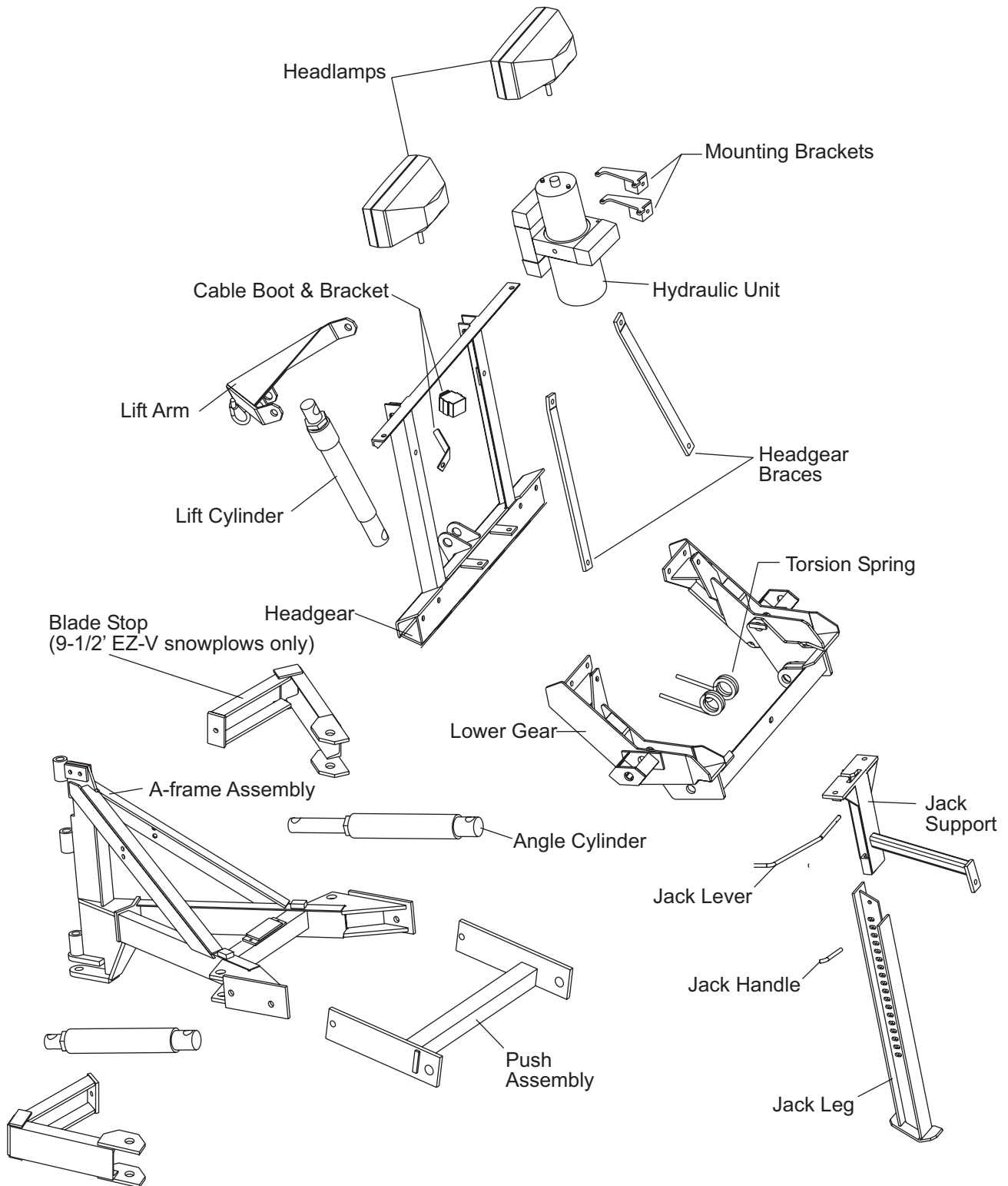


EZ-V® SNOWPLOW COMPONENTS

8-1/2' Blade Shown



EZ-V® SNOWPLOW COMPONENTS



ASSEMBLY INSTRUCTIONS



Fisher Engineering
P.O. Box 529
Rockland, ME 04841

Fisher Engineering reserves the right under its product improvement policy to change construction or design details and furnish equipment when so altered without reference to illustrations or specifications used herein. Fisher Engineering and the vehicle manufacturer may require and/or recommend optional equipment for snow removal. This product is manufactured under the following patents: 4,280,062, 4,999,935, 5,353,530, 5,420,480, RE35700 and other patents pending. Fisher Engineering offers a limited warranty on all snowplows and accessories. See separately printed page for this important information. The following are registered (®) trademarks of Douglas Dynamics, L.L.C.: EZ-V®, FISHER®

Printed in USA