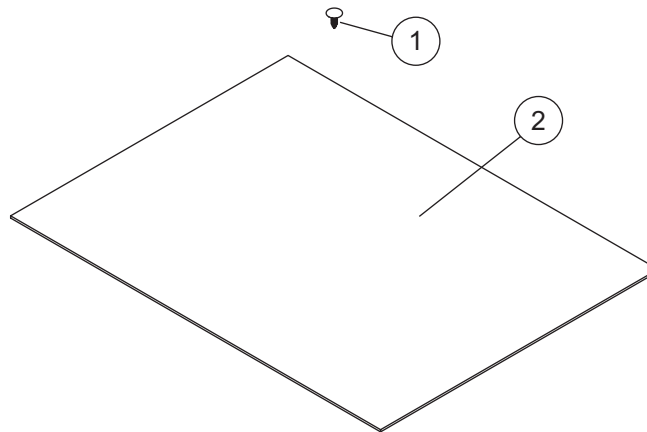


**PARTS LIST AND DIAGRAM**

June 1, 2003  
Lit. No. 28268



<b>28272 Splash Shield Replacement Kit</b>			
<b>Item</b>	<b>Part</b>	<b>Qty</b>	<b>Description</b>
1	28271	1	Plastic Push Rivet, Package of 9
2	*	1	24" x 18" Sheet Rubber
* available as part of service kit only			

**INSTALLATION INSTRUCTIONS**

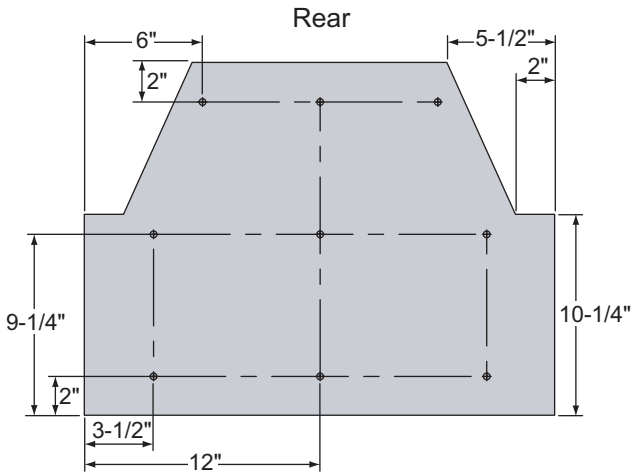
1. If your mount kit is covered in one of the following sections, skip to that section. If your mount kit is not covered, continue.
2. Position the rubber material on the vehicle so that it covers the area from underneath the radiator support to the vehicle frame cross member behind the rear snowplow mount. Trim the material as needed for a good fit.
3. Mark the locations for nine holes in the splash shield as well as the vehicle frame and/or snowplow mounts. These holes will be used to attach the shield to the vehicle and should be spaced out to allow for a secure attachment.
4. Drill 5/16" holes in the splash shield where marked.
5. Drill 9/32" holes in the vehicle frame and/or snowplow mounts where marked.
6. Attach the splash shield to the vehicle frame and/or snowplow mounts using the plastic push rivets included with this kit.

**⚠ CAUTION**

**Before drilling, check that there are no wires, brake lines, or hoses in the area that could be damaged.**

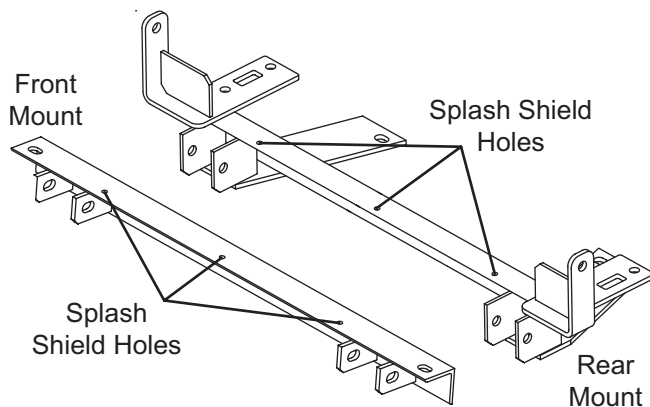
**1503 TRUCK MOUNT****(1995 – 20\_\_ GM S-10/Sonoma & Blazer/Jimmy)**

1. Lay the rubber material on a flat surface. Cut and drill the material according to the illustration below.



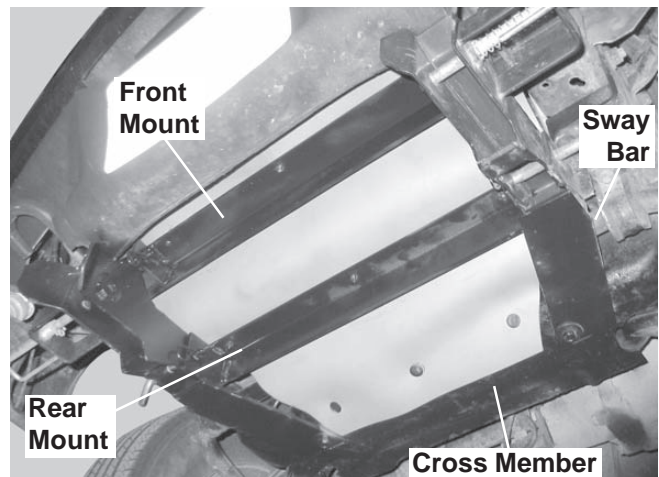
\* = Drill 5/16" Hole (9 places)

2. If your mounts did not come with holes for attaching the splash shield, you will need to drill three 9/32" holes in each mount. Using the modified rubber as a template and starting at the nontapered end, mark the location of the first three holes onto the front mount and the second three holes onto the rear mount with a sharp object (nail or scribe).



Remove the splash shield, and drill 9/32" holes where marked.

3. Position the splash shield on the vehicle so that the tapered end is toward the rear and the shield is on top of both the front and rear mounts and below the vehicle sway bar.
4. Attach the middle of the splash shield to the rear mount by inserting the plastic push rivets down through the shield and into the mount. Attach the front of the splash shield to the front mount in the same manner.
5. Make sure the splash shield is under the vehicle sway bar, then pull the tapered end of the shield to the vehicle frame cross member. Mark the location of the three holes in the shield onto the cross member with a sharp object (nail or scribe).
6. Drill 9/32" holes where marked into the cross member.
7. Attach the tapered end of the splash shield to the cross member using the remaining three plastic push rivets.



Copyright© 2003 Douglas Dynamics, L.L.C. All rights reserved. This material may not be reproduced or copied, in whole or in part, in any printed, mechanical, electronic, film or other distribution and storage media, without the written consent of the company. Authorization to photocopy items for internal or personal use by the company's outlets or snowplow owner is granted.

The company reserves the right under its product improvement policy to change construction or design details and furnish equipment when so altered without reference to illustrations or specifications used.