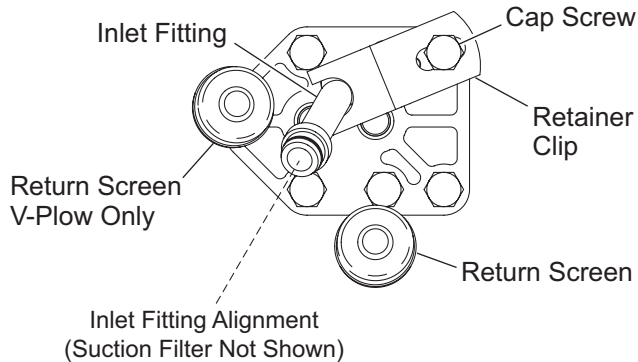
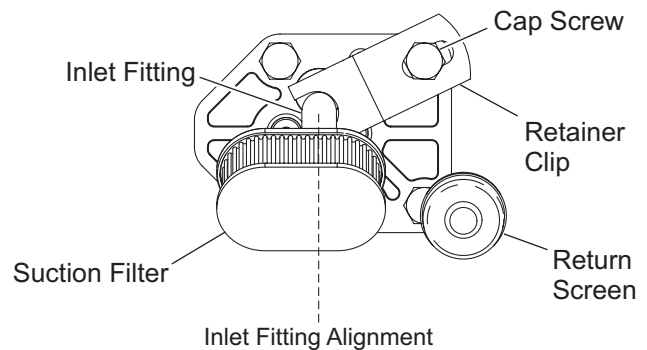


1. Lower blade to floor.
2. Drain fluid from reservoir. Remove the four screws and reservoir. Discard reservoir o-ring. Clean reservoir and o-ring groove.
3. Remove inlet fitting and filter from pump. Carefully pry suction filter off inlet tube and clean.
4. Lubricate -014 o-ring and assemble it into the groove on the barbed end of the new inlet fitting. Snap the suction filter onto the other end of the inlet fitting. Position the inlet fitting assembly so the filter will be towards the bottom of the reservoir when the unit is mounted on the snowplow. (See diagrams.) Gently drive the barbed end of the fitting squarely into the pump housing until the o-ring is not visible. Fitting and filter can be rotated into final position after installation.
5. Remove indicated cap screw and install retainer clip over inlet fitting and under cap screw (and washer, if used) as shown. Tighten cap screw to 150-160 in-lbs.
6. Lubricate and install new 2-250 reservoir o-ring. Lubricate inside edge of reservoir and carefully press reservoir evenly over o-ring onto manifold to avoid damaging o-ring. Secure with existing fasteners tightened to 15-20 in. lbs.
7. Refill reservoir and test snowplow functions.

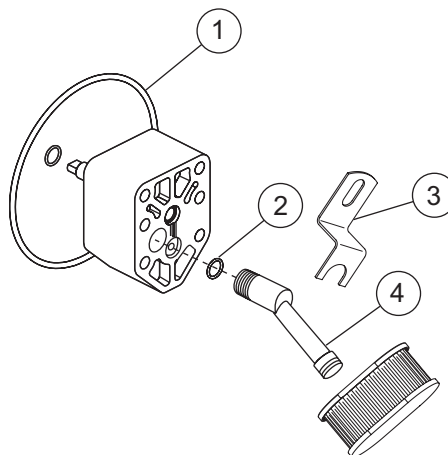
Straight Blade and V-Plow



Personal Plow



28479 Inlet Fitting Kit					
Item	Qty	Description	Item	Qty	Description
1	1	O-Ring 2-250	3	1	Retainer Clip
2	1	O-Ring -014	4	1	Inlet Fitting



The company reserves the right under its product improvement policy to change construction or design details and furnish equipment when so altered without reference to illustrations or specifications used.

Printed in U.S.A.