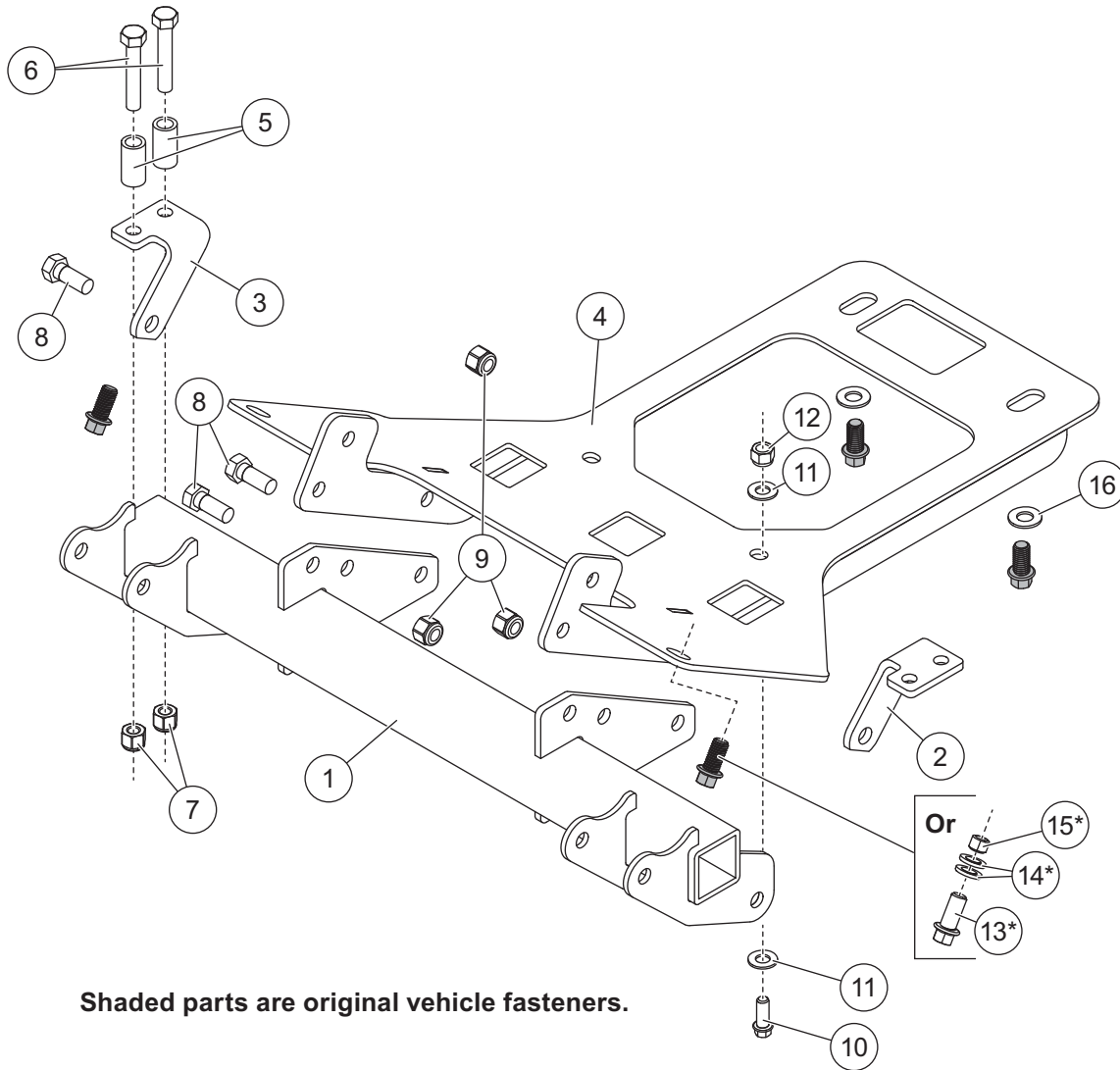


February 10, 2021
 Lit. No. 32545, Rev. 01

PARTS LIST



Shaded parts are original vehicle fasteners.

35134-1 Mount Kit						
Item	Part	Qty	Description	Item	Part	Qty Description
1	41908	1	Mount Beam	ns	52596	1 UTV Vehicle Control Harness
2	41910	1	Hanger – DS	ns	61548K	1 Plug Cover Kit
3	41911	1	Hanger – PS	ns	41907	1 Bolt Bag
4	41909	1	Skid Plate Assembly	ns	90730	1 Fuse Kit, 200A
ns	52565	1	Vehicle Cable Assembly, Long	ns		12 Cable Tie
41907 Bolt Bag						
5	42547	4	Frame Spacer	12		2 7/16-14 Hex Locknut GB Distorted Thread
6		4	7/16-20 x 2-1/2 Hex Cap Screw G8	13*		2 3/8-16 x 1-1/2 Hex Cap Screw G5
7		4	7/16-20 Hex Locknut G8	14*		4 3/8 Flat Washer Type A Wide
8		6	1/2-13 x 1-1/4 Hex Cap Screw G5	15*		2 3/8-16 Hex Locknut GB
9		6	1/2-13 Hex Locknut GB	16		2 1/2 Flat Washer Type 1 Hardened
10		2	7/16-14 x 1-1/4 Hex Cap Screw G5			
11		4	7/16 Flat Washer Type A Narrow			
			ns = not shown	G = Grade		

* See Installation Instructions for additional information.

Copyright © 2021 Douglas Dynamics, LLC. All rights reserved. This material may not be reproduced or copied, in whole or in part, in any printed, mechanical, electronic, film, or other distribution and storage media, without the written consent of the company. Authorization to photocopy items for internal or personal use by the company's outlets or snowplow owner is granted.

The company reserves the right under its product improvement policy to change construction or design details and furnish equipment when so altered without reference to illustrations or specifications used. This equipment manufacturer or the vehicle manufacturer may require or recommend optional equipment for snow removal. Do not exceed vehicle ratings with a snowplow. The company offers a limited warranty for all snowplows and accessories. See separately printed page for this important information.

Printed in U.S.A.
