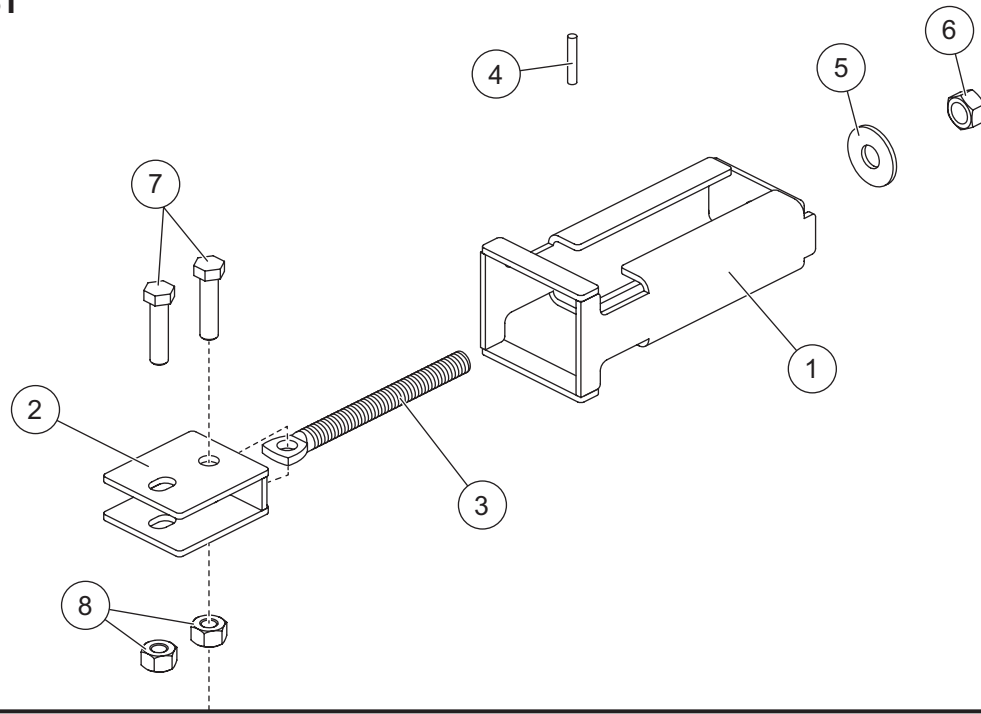


# Spring Replacement Tool

## PARTS LIST



20043-1 Spring Replacement Tool							
Item	Part	Qty	Description	Item	Part	Qty	Description
1	41862	1	Spring Tool Frame	4	20181	1†	1/4 x 1-1/4 Pin
2	41863	1	Clevis	-	41865	1	Hardware Bag
3	B61187	1*	5/8-11 x 6-11/16 Spade Bolt G8				
41865 Hardware Bag							
	5	1	5/8 Hardened Flat Washer	7		2	1/2-13 x 2 Hex Cap Screw G5
	6	1*	5/8-11 Hex Nut G5	8		2	1/2-13 Hex Nut G5
ns = not shown				G = Grade			

\* Kit includes 1 spare bolt/nut.

† Kit includes 5 spare pins.

### ⚠ CAUTION

Read this document before using the spring replacement tool.

### ⚠ CAUTION

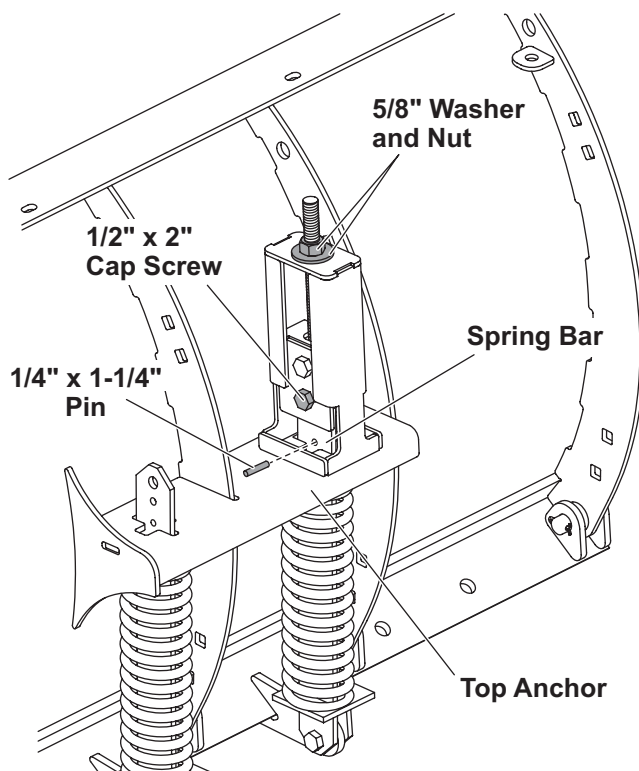
Use standard methods and practices when attaching snowplow and installing accessories, including proper personal protective safety equipment.

### ⚠ CAUTION

Servicing the trip springs without special tools and knowledge could result in personal injury. See your authorized outlet for service.

## SPRING REPLACEMENT INSTRUCTIONS

1. Park the vehicle on a smooth, level, hard surface, such as concrete. Lower the blade to the ground, and turn the control OFF. Disconnect the snowplow from the vehicle or turn the vehicle ignition to the OFF position and remove the key.
2. Before using the spring replacement tool, apply a light coating of multipurpose grease to the threaded end of the spade bolt.
3. Place the tool on the top anchor above the spring, making sure the upper end of the spring bar is between the clevis tabs of the spring replacement tool. Insert a 1/2" x 2" cap screw through the lower hole in one clevis tab, through the hole in the spring bar, and the lower hole in the other clevis tab. Install a 1/2" nut and hand tighten.



4. Use hand tools to tighten the 5/8" nut until the spring bar is raised enough to access the pin hole. Insert the 1/4" x 1-1/4" pin through the pin hole, centering the pin from side to side.
5. Loosen the 5/8" nut to lower the spring bar. Remove the spring tool assembly by removing the 1/2" cap screw inserted through the spring bar in Step 3.
6. Detach the spring from the blade by removing the shoulder bolt and locknut at the bottom of the spring bar. Retain the fasteners.
7. Insert the replacement spring with spring bar up through the top anchor on the blade. Install the bottom of the spring bar to the anchor on the trip edge using the retained shoulder bolt and locknut. Tighten to 50 ft-lb.
8. Repeat Step 3.
9. Use hand tools to tighten the 5/8" nut until the spring bar is raised enough to access the pin that was inserted in Step 4. Remove the pin.
10. Repeat Step 5.

Copyright © 2017 Douglas Dynamics, LLC. All rights reserved. This material may not be reproduced or copied, in whole or in part, in any printed, mechanical, electronic, film or other distribution and storage media, without the written consent of the company. Authorization to photocopy items for internal or personal use by the company's outlets or snowplow owner is granted.

The company reserves the right under its product improvement policy to change construction or design details and furnish equipment when so altered without reference to illustrations or specifications used. This equipment manufacturer or the vehicle manufacturer may require or recommend optional equipment for snow removal. Do not exceed vehicle ratings with a snowplow. The company offers a limited warranty for all snowplows and accessories. See separately printed page for this important information.

Printed in U.S.A.