



**Fisher Engineering**

**7197**

50 Gordon Drive, Rockland, Maine 04841-2139 • www.fisherplows.com

December 15, 2014  
Lit. No. 43457, Rev. 03

# **Minute<sup>2</sup>** **SYSTEM**

## **MOUNT KIT**

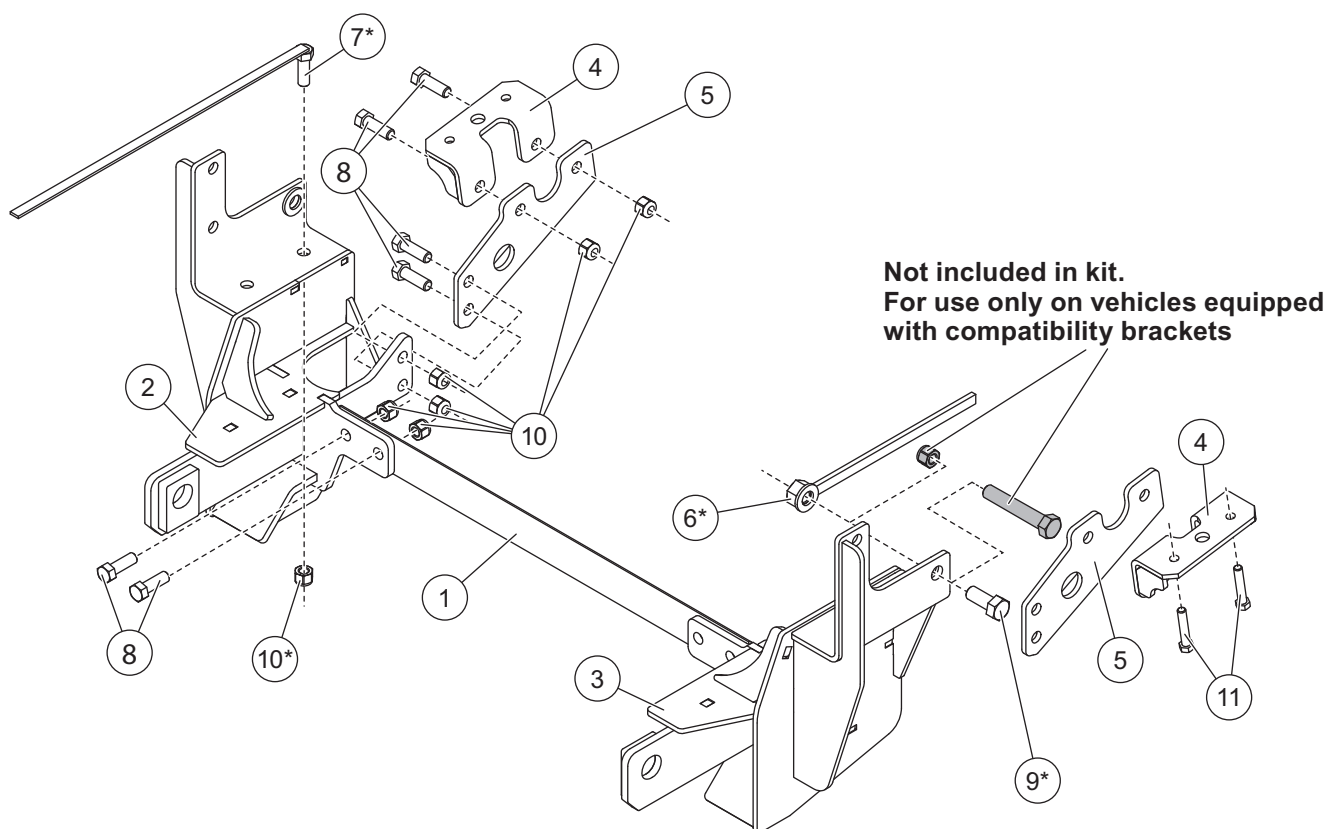
**Dodge Ram 2500 Gasoline**

**2010 - 13**

**Dodge Ram 2500 Diesel**

**2010 - 13**

### **Parts List**



\* For use only on vehicles without compatibility brackets

7197 Mount Kit							
Item	Part	Qty	Description	Item	Part	Qty	Description
1	67696	1	Cross Bar	6	B31109	2	5/8-11 Nut with Handle
2	43452	1	Mount PS	7	22314	2	1/2-13 x 1-1/2 Hex Cap Screw G5 with Handle
3	43453	1	Mount DS	ns	43460	1	Bolt Bag
4	43455	2	Stabilizer Bracket				
5	43461	2	Thrust Arm				
43460 Bolt Bag							
8		12	1/2-13 x 1-1/2 Hex Cap Screw G5	10		14	1/2-13 Hex Locknut GB
9		2	5/8-11 x 1-1/2 Hex Cap Screw G5	11		4	M10 x 1.50 x 40 Hex Cap Screw G10.9
ns = not shown			G = Grade			M = Metric	

Copyright © 2014 Douglas Dynamics, LLC. All rights reserved. This material may not be reproduced or copied, in whole or in part, in any printed, mechanical, electronic, film or other distribution and storage media, without the written consent of Fisher Engineering. Authorization to photocopy items for internal or personal use by Fisher Engineering outlets or snowplow owner is granted.

Fisher Engineering reserves the right under its product improvement policy to change construction or design details and furnish equipment when so altered without reference to illustrations or specifications used. Fisher Engineering or the vehicle manufacturer may require or recommend optional equipment for snow removal. Do not exceed vehicle ratings with a snowplow. Fisher Engineering offers a limited warranty for all snowplows and accessories. See separately printed page for this important information. The following are registered (®) trademarks of Douglas Dynamics, LLC: FISHER®, Minute Mount® 2.

Printed in U.S.A.