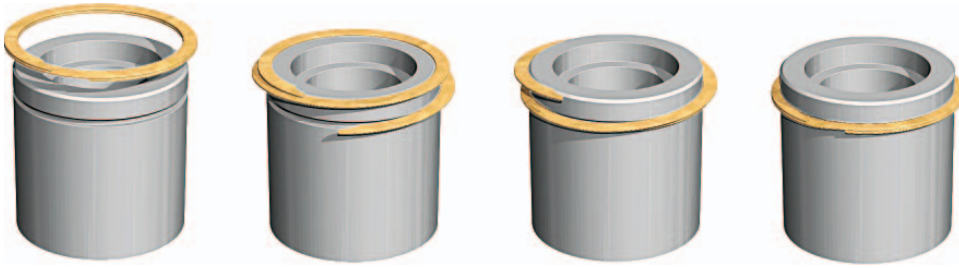


SPIRAL RETAINING RING INSTALLATION INSTRUCTIONS

1. Separate the ring coils and insert one end of the ring into the groove.



2. Wind the ring by pressing down around the circumference until the entire ring is inserted into the groove.
3. Inspect for proper seating in the groove.

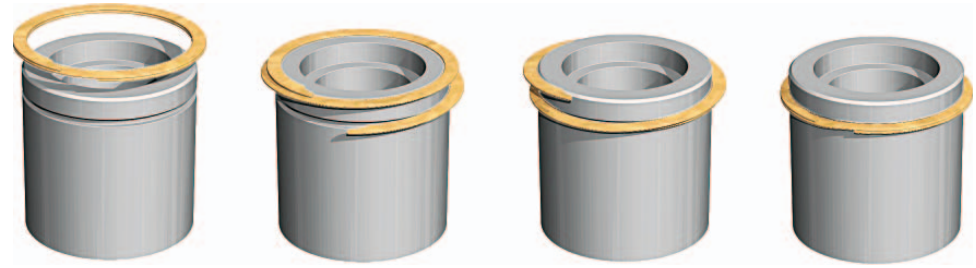
Lit. No. 48389, Rev. 00

Printed in U.S.A.

August 15, 2008

SPIRAL RETAINING RING INSTALLATION INSTRUCTIONS

1. Separate the ring coils and insert one end of the ring into the groove.



2. Wind the ring by pressing down around the circumference until the entire ring is inserted into the groove.
3. Inspect for proper seating in the groove.

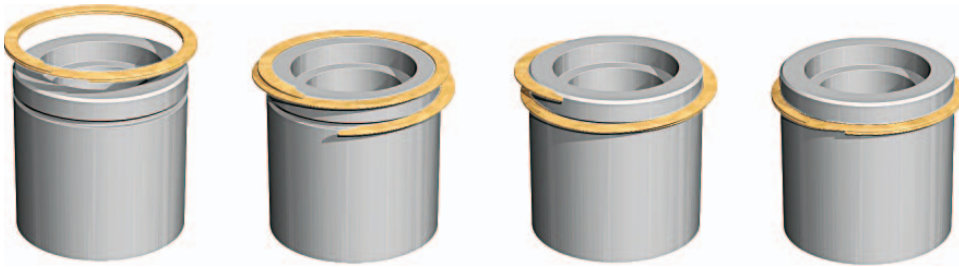
Lit. No. 48389, Rev. 00

Printed in U.S.A.

August 15, 2008

SPIRAL RETAINING RING INSTALLATION INSTRUCTIONS

1. Separate the ring coils and insert one end of the ring into the groove.



2. Wind the ring by pressing down around the circumference until the entire ring is inserted into the groove.
3. Inspect for proper seating in the groove.

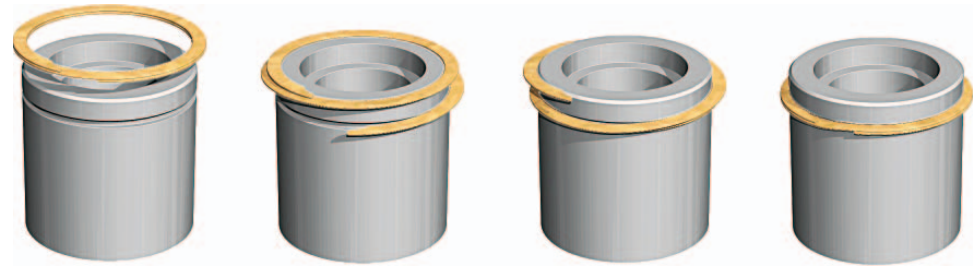
Lit. No. 48389, Rev. 00

Printed in U.S.A.

August 15, 2008

SPIRAL RETAINING RING INSTALLATION INSTRUCTIONS

1. Separate the ring coils and insert one end of the ring into the groove.



2. Wind the ring by pressing down around the circumference until the entire ring is inserted into the groove.
3. Inspect for proper seating in the groove.

Lit. No. 48389, Rev. 00

Printed in U.S.A.

August 15, 2008