



Spring, Connecting Link & U-Bolt Kit

INSTALLATION INSTRUCTIONS

⚠ CAUTION

Read this document before installing the spring, connecting link, and U-bolt kit.

⚠ CAUTION

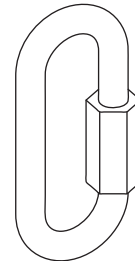
Use standard methods and practices when attaching snowplow and installing accessories, including proper personal protective safety equipment.

1. Park the vehicle on a smooth, level, hard surface, such as concrete. Lower the blade to the ground. Place the control in FLOAT and manually collapse the lift ram. Turn the control OFF. Turn the vehicle ignition to the "OFF" position and remove the key.
 2. Assemble a nut fully onto each side of the U-bolt. Pass the U-bolt through the loop at one end of the spring and insert the U-bolt into the holes on the center tab on the A-frame or T-Frame. Secure with two locknuts.
 3. When the blade is lowered, the lift chain spring provides slack in the lift chain for ease of mounting and dismounting the blade.
- Your snowplow application may use either a lap link or a quick link to connect the lift chain and spring.

Lap Link



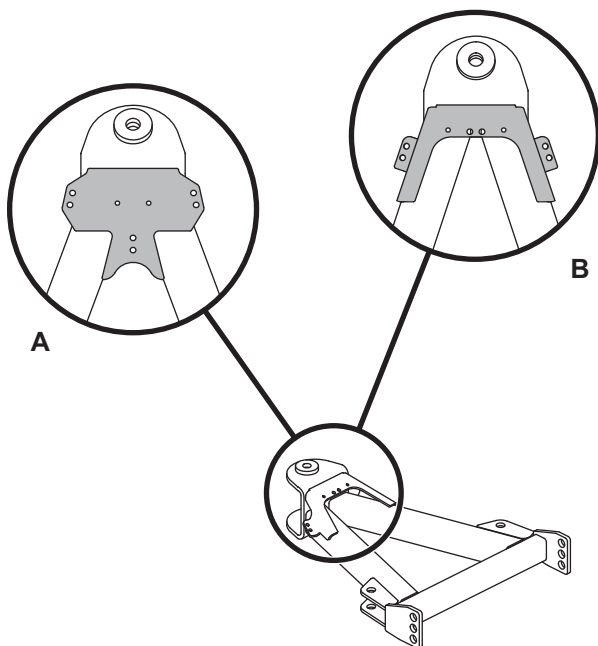
Quick Link



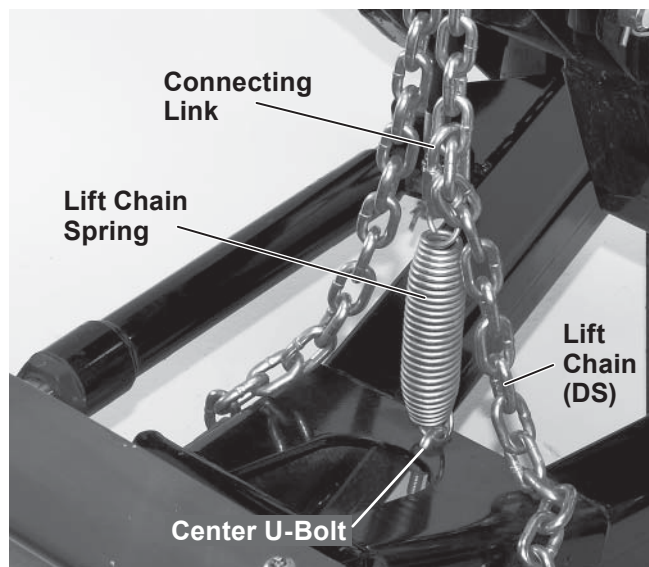
Refer to the table below to determine which link in the driver-side lift chain to use as the attachment point for the spring. For XLS™ and XtremeV™ snowplows, also refer to the A-frame and T-frame diagrams that follow.

Connecting Link Attachment Point			
Snowplow	A-Frame/ T-Frame	Number of Links from Driver-Side U-Bolt	
		Lap Link	Quick Link
XLS	A	8	9
	B	14	14
XtremeV	C	7	8
	D	7	8
	E	8	9
XV2™	—	—	9
SD	—	8	9
MC	—	8	9
HD/XBLADE™	—	6	7
HD2™/HDX™	—	—	14
HC	—	—	8
EZ-V® 7'6"	—	—	9

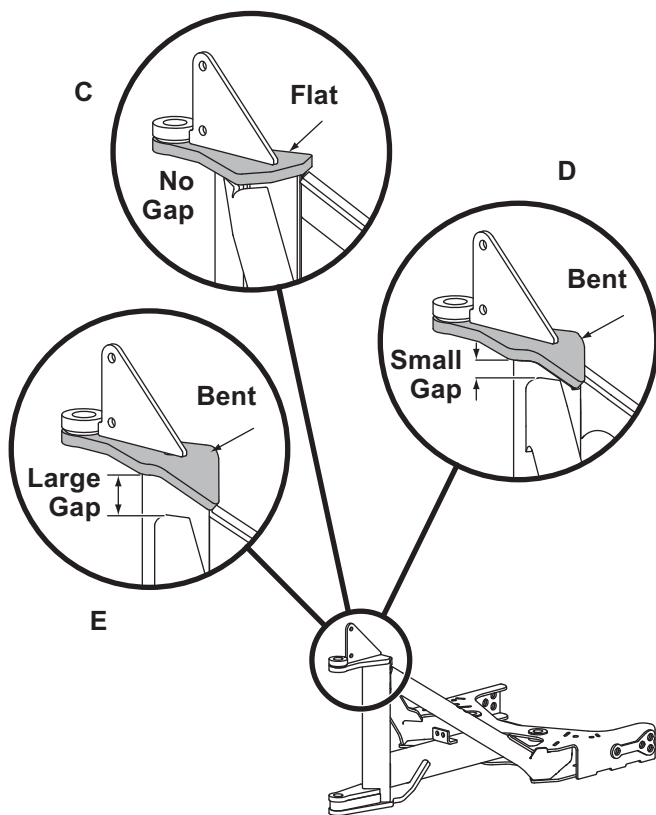
A-Frame Types, XLS™ Blades



4. Count the links, beginning with the one attached to the driver-side U-bolt. Insert the connecting link through the lift chain link selected.
5. Attach the spring loop to the connecting link.
6. Close the connecting link.



T-Frame Types, XtremeV™ Blades



LIFT CHAIN SPRING ADJUSTMENT

If you encounter mounting or dismounting difficulty, the attachment point of the connecting link and spring can be changed to add or remove slack.

If there is not enough slack in the lift chain, there will be difficulty getting the connecting pins to engage the vehicle pushplates while pushing back on the headgear. Adjust the connecting link *up* one link from the factory setting.

If there is too much slack in the lift chain, adjust the connecting link *down* one link from the factory setting.

Moving the connecting link more than one chain link higher or lower than the original factory setting is not recommended.

FINAL ADJUSTMENTS

⚠ WARNING

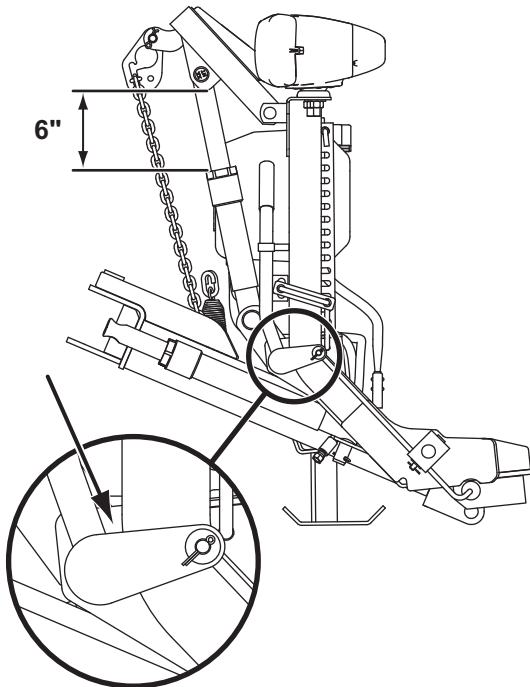
Keep 8' clear of the blade when it is being raised, lowered, or angled. Do not stand between vehicle and blade or directly in front of the blade. If the blade hits or drops on you, you could be seriously injured.

With the snowplow attached to a properly ballasted vehicle and the blade lowered to the ground, the A-frame/T-frame should be parallel with the ground.

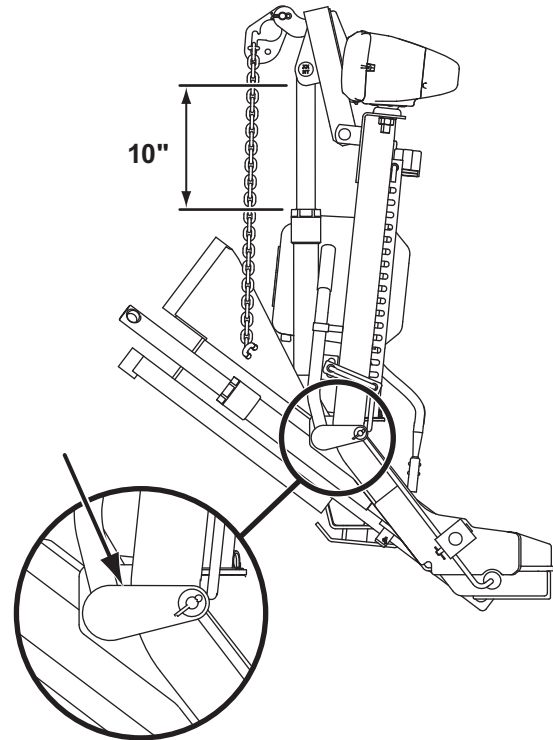
SD Series, HD Series, HD2™, HDX™, XLS™, XtremeV™, XV2™ & EZ-V® 7'6" Blades Only

1. Adjust the length of the lift chain so that the A-frame/T-frame hits the A-frame/T-frame stacking stops (XLS, XtremeV, XV2, EZ-V 7'6", and some HDX installations) or the lower portion of the headgear (SD Series, HD Series, HD2, and some HDX installations), when the lift ram is fully extended (6" for SD Series, 10" for all others).

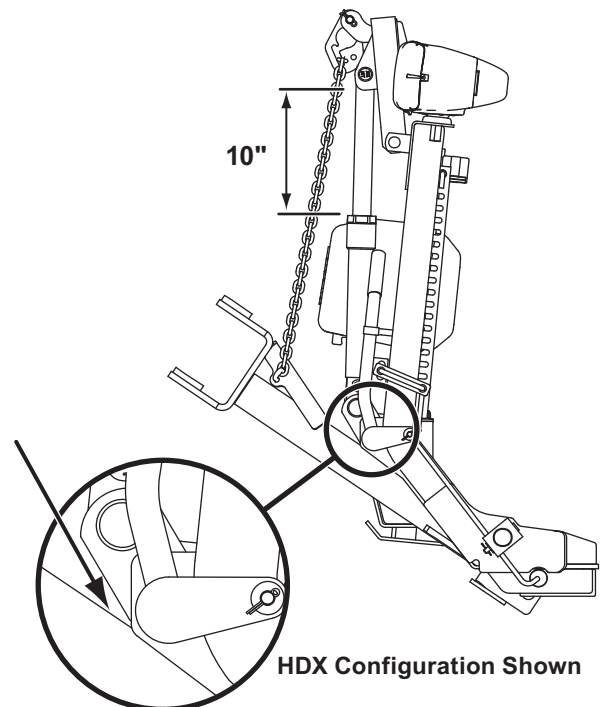
SD Series Blades



HD Series Blades

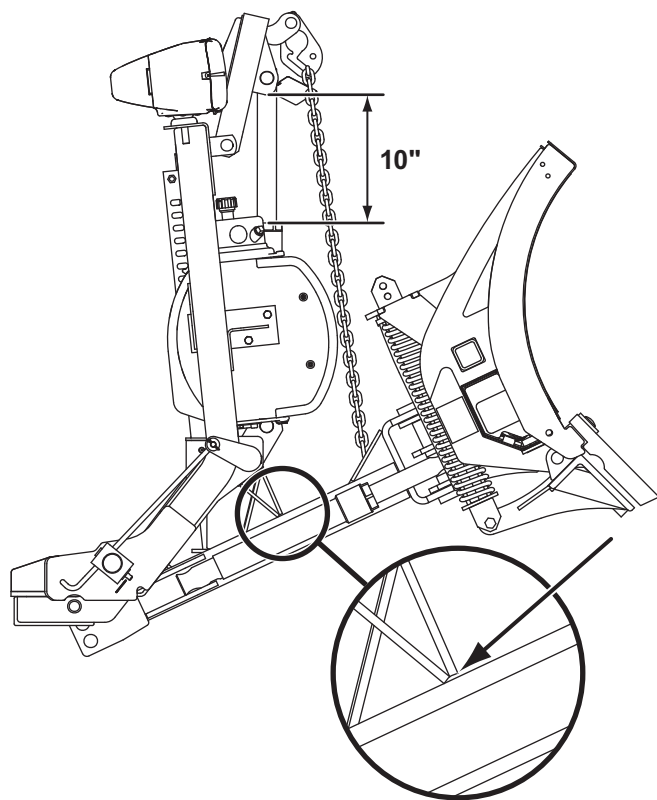


HD2 & HDX Blades

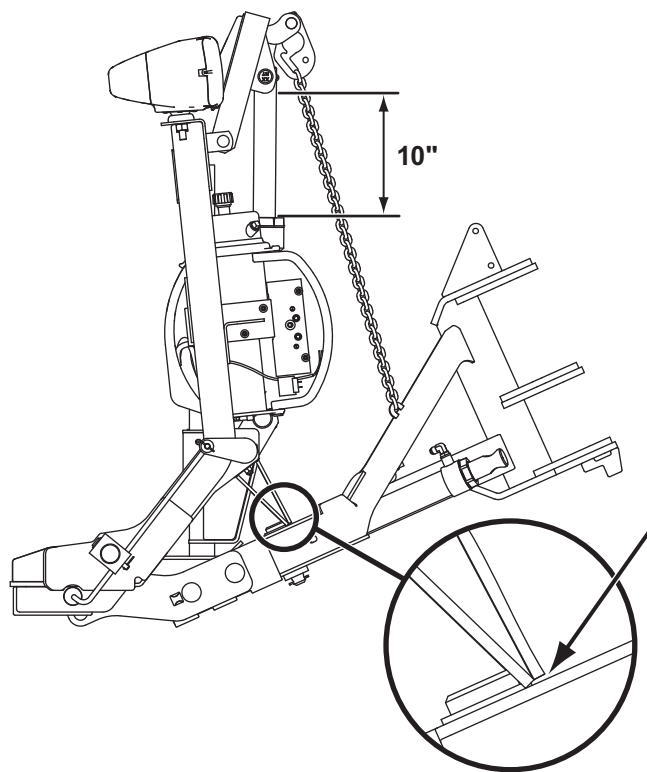


HDX Configuration Shown

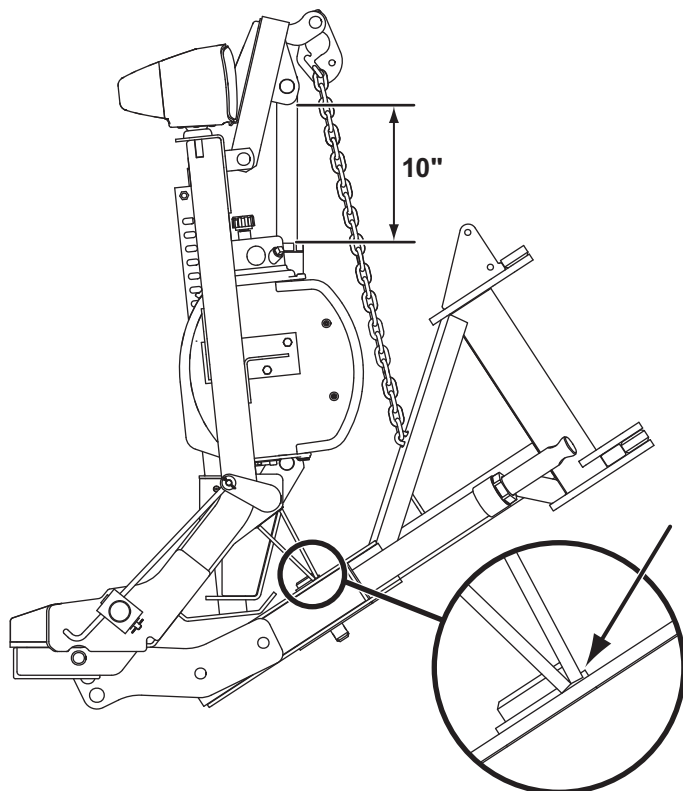
XLS™ Blades



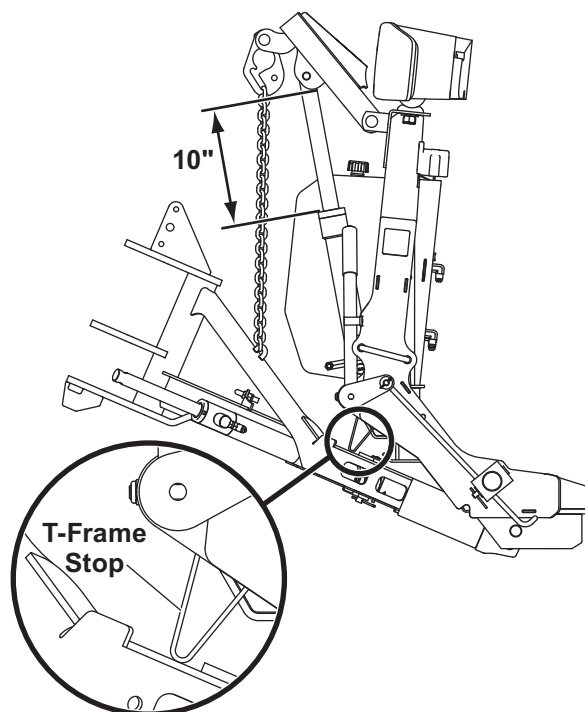
XV2™ Blades



XtremeV™ Blades



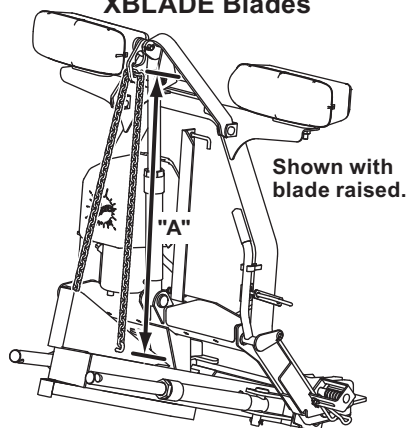
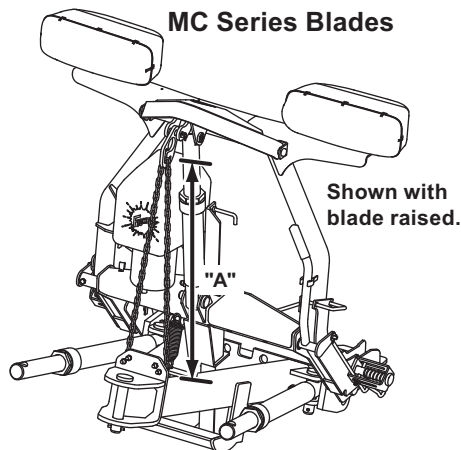
EZ-V® 7'6" Blades



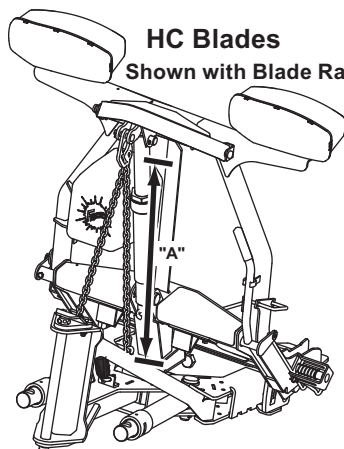
XBLADE™, MC Series & HC Blades Only

1. To prevent the blade from blocking the snowplow headlamps during travel, adjust the chain to the minimum length indicated in the chart below.
(Chain will be slack.)

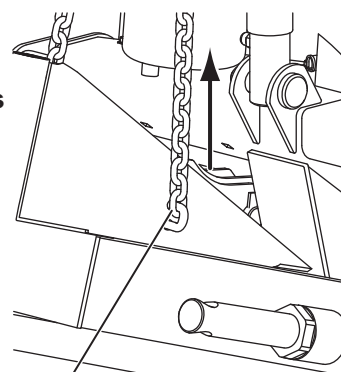
A-Frame Adjustment Holes	Minimum Dimension "A"		
	XBLADE	MC Series	HC
Top	29.0"	30.0"	30.0"
Middle	28.5"	28.5"	29.0"
Bottom	28.0"	27.0"	28.0"

XBLADE Blades**MC Series Blades****HC Blades**

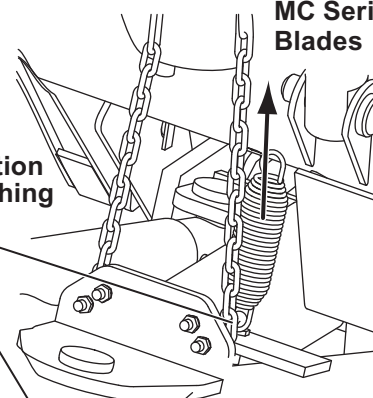
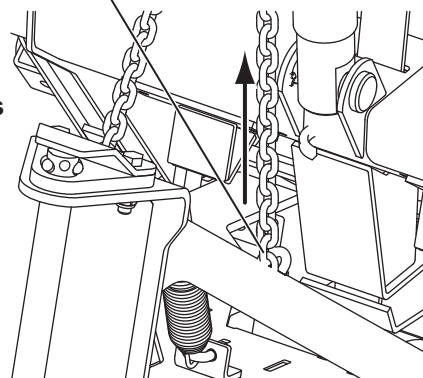
Shown with Blade Raised



2. Remove the U-bolt securing the lift chain on the passenger's side of the A-frame/T-frame. Reposition the U-bolt in the chain so the chain is the same length as the chain on the driver's side.
3. Reattach the U-bolt and loose end of the lift chain to the passenger's side of the A-frame/T-frame using the hardware removed in the previous step. The chain must be the same length on both sides.
4. Fully tighten the U-bolts, with the chain oriented in the direction of lift, before lifting the blade. The chain must pivot freely in the U-bolt.

XBLADE Snowplows**MC Series Blades**

Keep first link oriented in direction of lift when attaching U-bolt.

**HC Blades**

XLS™ Blades Only

Fully angle the blade in raised and lowered positions. Adjust the hose fittings and wraps so that the hoses do not contact the vehicle bumper, have no sharp bends, and are wrapped at contact points with the headgear and blade.

XtremeV™ and XV2™ Blades Only

Raise and lower the snowplow in the fully retracted (vee) position to verify that the hydraulic hoses bow outward and do not interfere with snowplow components.

NOTE: For XtremeV blades, ensure that the base-end angle ram hoses are wrapped over the diagonal brace. Adjust hoses, fittings, and wraps as necessary to prevent any hoses from being pinched.

Fisher Engineering reserves the right under its product improvement policy to change construction or design details and furnish equipment when so altered without reference to illustrations or specifications used. Fisher Engineering or the vehicle manufacturer may require or recommend optional equipment for snow removal. Do not exceed vehicle ratings with a snowplow. Fisher Engineering offers a limited warranty for all snowplows and accessories. See separately printed page for this important information. The following are registered (®) or unregistered (™) trademarks of Douglas Dynamics, LLC: EZ-V®, FISHER®, HD2™, HDX™, XBLADE™, XLS™, XtremeV™, XV2™.

Printed in U.S.A.
