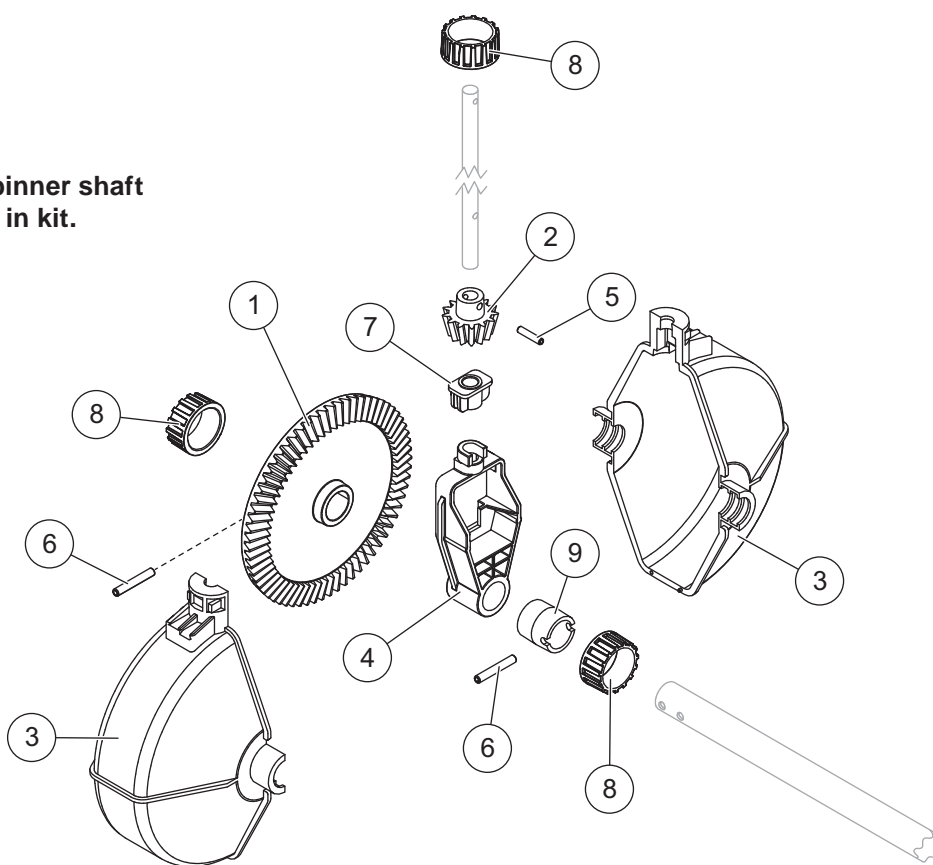


Gear Kit

WB-100B Walk-Behind Broadcast Spreader

PARTS LIST

Axles and spinner shaft
not included in kit.



88261 Gear Kit		
Item	Qty	Description
1	1	5-1/2 Bevel Gear
2	1	1-1/2 Bevel Gear
3	2	Gear Cover
4	1	Gear Support
5	1	5/32 x 3/4 Spring Pin
6	2	3/16 x 1-1/4 Spring Pin
7	1	Spinner Shaft Support
8	3	Lock Ring
9	1	Axle Spacer

⚠ CAUTION

Use standard methods and practices when installing service parts and accessories, including proper personal protective safety equipment.

⚠ CAUTION

Read this document before installing the Gear Kit.

INSTALLATION INSTRUCTIONS

1. Detach the lock rings from the gear cover.
Remove both halves of the gear cover.
2. Remove all spring pins. Separate the axles and spinner shaft from the gear kit.
3. Remove and discard all worn components.
Replace them with new components from the kit during reassembly.
3. Slide a lock ring and the axle spacer onto the non-drive axle and secure the spacer with a supplied 3/16" x 1-1/4" spring pin.
4. Slide a lock ring and the 5-1/2" bevel gear over the drive axle, with the gear facing the gear support, and secure it with a supplied 3/16" spring pin.
5. Insert both axles into the base of the gear support.
6. Replace the gear cover halves over the gear assembly and secure the cover with the three lock rings.

Reassembly

1. Insert the spinner shaft support into the gear support and seat the spinner shaft support firmly in place.
2. Insert the 1-1/2" bevel gear into the gear support. Slide the gear support onto the spinner shaft, keeping it oriented as shown in the illustration. Secure the 1-1/2" bevel gear to the spinner shaft with the supplied 5/32" x 3/4" spring pin.

Copyright © 2013 Douglas Dynamics, LLC. All rights reserved. This material may not be reproduced or copied, in whole or in part, in any printed, mechanical, electronic, film or other distribution and storage media, without the written consent of the company. Authorization to photocopy items for internal or personal use by the company's outlets or spreader owner is granted.

The company reserves the right under its product improvement policy to change construction or design details and furnish equipment when so altered without reference to illustrations or specifications used. This equipment manufacturer or the vehicle manufacturer may require or recommend optional equipment for spreaders. Do not exceed vehicle ratings with a spreader. The company offers a limited warranty for all spreaders and accessories. See separately printed page for this important information.

Printed in U.S.A.