



Fisher Engineering

50 Gordon Drive, Rockland, Maine 04841-2139 • www.fisherplows.com

**90750, 90800, 90850, 90900
93800, 93900, 97400**

November 1, 2016
Lit. No. 57830, Rev. 01



HD2™ and HDX™ Skid Steer Snowplows

HD2 Blade Assembly 90750, 90800, 90850, 90900

HDX Blade Assembly 93800, 93900

A-Frame/Attachment Plate & Hydraulics 97400

Owner's Manual
Original Instructions

⚠ CAUTION

**Read this manual before operating or
servicing snowplow.**

This manual supersedes all editions with an earlier date.

A DIVISION OF FISHER, LLC

SNOWPLOW OWNER DATA SHEET

Register your snowplow online at www.fisherplows.com

Owner Name: _____

Date Purchased: _____

Outlet Name: _____ Phone: _____

Outlet Address: _____

Vehicle Model/Year: _____

Snowplow Model/Year: _____

Snowplow Type/Size: _____ Weight: _____ lb/kg

Ballast: No ___ Yes ___ Amount: _____ lb/kg

Blade Serial Number: _____

TABLE OF CONTENTS

PREFACE	6	MAINTENANCE	17
SAFETY INFORMATION	7	Preseason Check.....	17
SNOWPLOW WEIGHTS AND VEHICLE APPLICATIONS	10	Postseason Maintenance.....	17
GETTING TO KNOW YOUR SNOWPLOW	11	Maintenance and Adjustment	17
Unpacking and Inspection	11	Hydraulic Hose and Fitting Replacement	18
Hydraulics Guide.....	11	Vehicle	19
Accessories	12	Recycle	19
ATTACHING & DETACHING INSTRUCTIONS	13	Blade Finish	19
OPERATING YOUR SNOWPLOW	14	Tools	19
Transporting Snowplow	14	Parts.....	19
Driving and Plowing on Snow and Ice	14	Troubleshooting	19
Plowing Snow	15		
Parking with Snowplow Attached	16		
Towing a Disabled or Stuck Vehicle.....	16		

PREFACE

Congratulations on purchasing the most advanced skid steer snowplow available! FISHER® snowplows are clearing new trails for innovative design, rugged durability, quality craftsmanship, and superior performance. Our innovative products are tested all over the snowbelt.

This manual provides safety, operation, and maintenance information for your new FISHER snowplow. To keep your snowplow in good condition, read and understand this manual and follow its recommendations. Failure to do so may affect your warranty coverage.

When service is necessary, your local FISHER distributor knows your snowplow best. Contact your FISHER outlet for maintenance, service, or any other assistance you require.

If you have not already done so, please visit www.fisherplows.com to register your new snowplow!

Your FISHER snowplow is a valuable investment. The best way to assure original equipment reliability and efficiency is to purchase only **Genuine FISHER Parts and Accessories**. "Will-fit" parts and accessories can alter your plow's performance characteristics and may affect your product warranty.

Protect your investment by staying with the best—original FISHER parts and accessories from your local FISHER outlet.



SAFETY

SAFETY DEFINITIONS

⚠ WARNING

Indicates a potentially hazardous situation, that, if not avoided, could result in death or serious personal injury.

⚠ CAUTION

Indicates a potentially hazardous situation that, if not avoided, may result in minor or moderate injury. It may also be used to alert against unsafe practices.

NOTE: Indicates a situation or action that can lead to damage to your snowplow and vehicle or other property. Other useful information can also be described.

WARNING/CAUTION & INSTRUCTION LABELS

Become familiar with and inform users about the warning and instruction labels on the back of the blade.

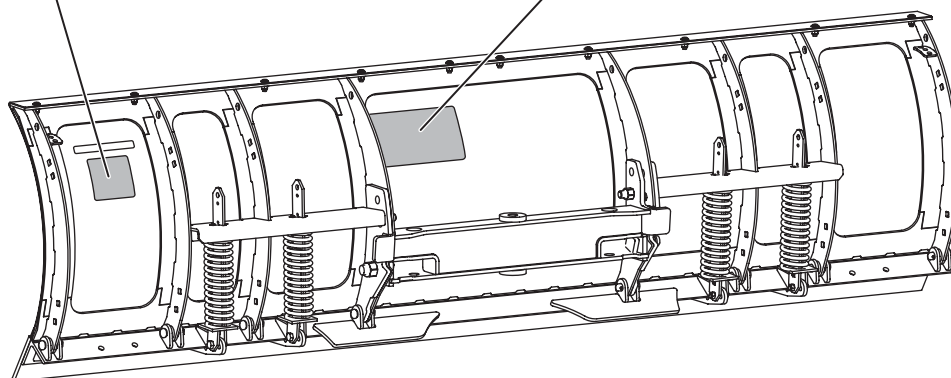
NOTE: If labels are missing or cannot be read, see your sales outlet.

Instruction Label (to be applied by snowplow installer)

Warning/Caution Label

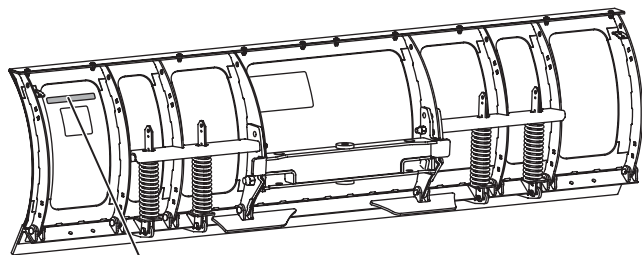
⚠ WARNING	
	Lower blade when vehicle is parked.
	Do not exceed GVWR or GAWR including blade and ballast.
⚠ CAUTION	
	Read Owner's Manual before operating or servicing snowplow.
	Transport speed should not exceed 45 mph (72 km/h). Further reduce speed under adverse travel conditions.
	Plowing speed should not exceed 10 mph (16 km/h).
See your sales outlet/Web site for specific vehicle application recommendations.	

Attach	Detach
<p>Read Owner's Manual for Complete Instructions.</p> <p>Snowplow Attachment Plate, Receiving Hole, Lever Receiving Hole</p>	<p>Read Owner's Manual for Complete Instructions.</p> <p>Snowplow Attachment Plate, Receiving Hole, Lever Receiving Hole</p>
<p>Follow skid steer labeling and Owner's Manual instructions.</p> <p>WARNING: Keep fingers away from snowplow and skid steer pinch points.</p>	
<ul style="list-style-type: none"> Position the skid steer close to the snowplow and align the mount points on the skid steer plate with the snowplow attachment plate. Tilt the skid steer plate forward and position the top edge of the plate under the receiving pocket on the top edge of the snowplow attachment plate. Slowly raise the arms on the skid steer and tilt the skid steer plate toward the cab until the snowplow attachment plate is flush with the skid steer plate. Turn the engine OFF. Engage both locking levers on the skid steer by rotating each handle 90° into a horizontal position. The skid steer locking levers shall insert into the snowplow lever receiving holes. Attach all hydraulic hoses on the snowplow to the auxiliary hydraulic connections located on the skid steer. On some skid steer models, it may be necessary to initiate an auxiliary hydraulic switch on the skid steer prior to operating the snowplow. 	<ul style="list-style-type: none"> Lower the snowplow on a flat, level surface and turn the engine OFF. Disconnect all hydraulic hoses on the snowplow from the auxiliary hydraulic connections located on the skid steer. Disengage both locking levers on the skid steer by rotating each handle 90° into a vertical position. The skid steer locking levers shall withdraw from the snowplow lever receiving holes. Turn the engine ON. Slowly lower the arms on the skid steer and tilt the skid steer plate forward away from the cab until the top edge of the skid steer plate clears the receiving pocket on the top edge of the snowplow attachment plate. Back the skid steer away slowly.



SAFETY

Blade Serial Number Label



ZZZZZ



YYMDDLXXXXZZZZ



Code	Definition
YY	2-Digit Year
MM	2-Digit Month
DD	2-Digit Day
LL	2-Digit Location Code
XXXX	4-Digit Sequential Number
ZZZZZZ	5- to 7-Digit Blade Assembly PN

SAFETY PRECAUTIONS

Improper installation and operation could cause personal injury, and/or equipment and property damage. Read and understand labels and the Owner's Manual before installing, operating, or making adjustments.

⚠ WARNING

Lower the blade when the vehicle is parked. Temperature changes could change hydraulic pressure, causing the blade to drop unexpectedly or damaging hydraulic components. Failure to do this could result in serious personal injury.

⚠ WARNING

The driver shall keep bystanders clear of the blade when it is being raised, lowered, or angled. Do not stand between vehicle and blade or within 8 feet of a moving blade. A moving or falling blade could cause personal injury.

⚠ WARNING



Do not exceed vehicle operative capacity including the blade. See vehicle rating label.

⚠ WARNING

Never stand, work, or reach under lift arms or lift cylinders without employing a lift arm stop or stand.

⚠ CAUTION

Read Owner's Manual before operating or servicing snowplow.

⚠ CAUTION

Transport speed should not exceed vehicle manufacturer's recommendations. Further reduce speed under adverse travel conditions.

⚠ CAUTION

Plowing speed should not exceed 10 mph (16 km/h).

SAFETY

HYDRAULIC SAFETY

WARNING



Hydraulic fluid under pressure can cause skin injection injury. If you are injured by hydraulic fluid, get medical attention immediately.

- Always inspect hydraulic components and hoses before using. Replace any damaged or worn parts immediately.
- If you suspect a hose leak, DO NOT use your hand to locate it. Use a piece of cardboard or wood.

PERSONAL SAFETY

- Remove ignition key and put the vehicle in park or in gear to prevent others from starting the vehicle during installation or service.
- Wear only snug-fitting clothing while working on your vehicle or snowplow.
- Do not wear jewelry or a necktie, and secure long hair.
- Wear safety goggles to protect your eyes from battery acid, gasoline, dirt, and dust.
- Avoid touching hot surfaces such as the engine, radiator, hoses, and exhaust pipes.
- Always have a fire extinguisher rated BC handy, for flammable liquids and electrical fires.

FIRE AND EXPLOSION

WARNING

Gasoline is highly flammable and gasoline vapor is explosive. Never smoke while working on vehicle. Keep all open flames away from gasoline tank and lines. Wipe up any spilled gasoline immediately.

Be careful when using gasoline. Do not use gasoline to clean parts. Store only in approved containers away from sources of heat or flame.

CELL PHONES

A driver's first responsibility is the safe operation of the vehicle. The most important thing you can do to prevent a crash is to avoid distractions and pay attention to the road. Wait until it is safe to operate Mobile Communication equipment such as cell phones, text messaging devices, pagers, or two-way radios.

VENTILATION

WARNING

Vehicle exhaust contains lethal fumes. Breathing these fumes, even in low concentrations, can cause death. Never operate a vehicle in an enclosed area without venting exhaust to the outside.

BATTERY SAFETY

CAUTION

Batteries normally produce explosive gases, which can cause personal injury. Therefore, do not allow flames, sparks, or lit tobacco to come near the battery. When charging or working near a battery, always cover your face and protect your eyes, and also provide ventilation.

- Batteries contain sulfuric acid, which burns skin, eyes, and clothing.
- Disconnect the battery before removing or replacing any electrical components.

NOISE

Airborne noise emission during use is below 70 dB(A) for the snowplow operator.

VIBRATION

Operating snowplow vibration does not exceed 2.5 m/s² to the hand-arm or 0.5 m/s² to the whole body.

SNOWPLOW WEIGHTS / VEHICLE APPLICATIONS

SNOWPLOW BLADE ASSEMBLY WEIGHTS

Size	Blade Assembly	Wt (lb)	Wt (kg)
7'-6"	HD2™ Blade	624	284
8'	HD2 Blade	674	306
8'-6"	HD2 Blade	690	314
9'	HD2 Blade	710	323
8'	HDX™ Blade	777	353
9'	HDX Blade	818	372

VEHICLE APPLICATIONS

CAUTION

See your FISHER® outlet for specific vehicle application recommendations before installation.

Vehicle application recommendations are based on the following:

- The vehicle with the snowplow installed must comply with the vehicle manufacturer's stated gross vehicle and axle weight ratings and the front and rear weight distribution ratio.
- In some cases there may be additional limitations and requirements.
- Installation, modification, and addition of accessories must comply with published FISHER® recommendations and instructions. Available capacity decreases as the vehicle is loaded with cargo or other equipment or snowplow accessories are installed.
- If there is uncertainty as to whether available capacity exists, the actual vehicle as configured must be weighed.

GETTING TO KNOW YOUR SNOWPLOW

UNPACKING AND INSPECTION

Your skid steer snowplow has been packaged to withstand transit and weather related damage. Fully inspect all components upon receipt of your snowplow. In the event of shipping damage or missing parts, immediately contact our customer support department at 1-877-299-2734.

Begin unpacking and inspection in the following order:

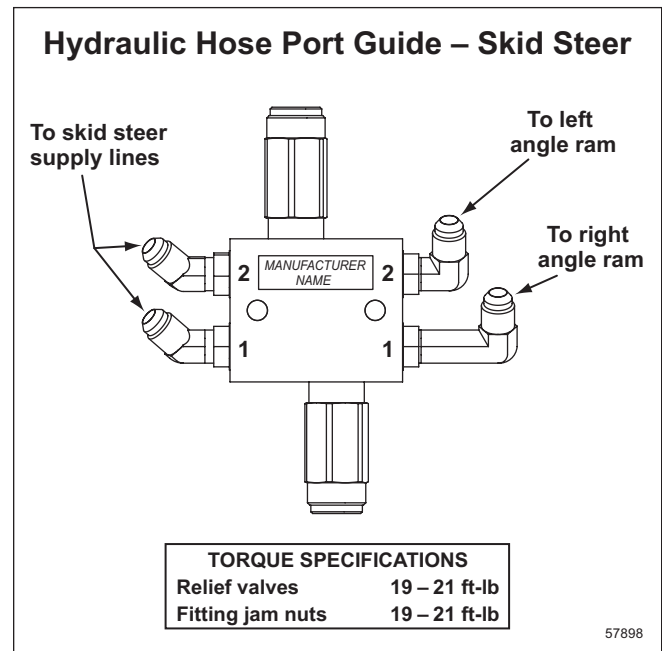
1. Remove the shipping document from the end panel of the pallet wrap. Retain all documentation for your records.
2. All wood framing and polyethylene material should be removed from the pallet for easy access to the snowplow.
3. Due to the odd-shaped components and size of several assembly parts, various cable ties and corrugated material are used for scratch resistance and package orientation. Please remove these items prior to assembly.
4. Place the main blade assembly on a flat, level surface.

Once you have inspected all parts and removed all packaging materials, your snowplow is ready to be fully assembled as described in the Installation Instructions document.

Retain a copy of the Snowplow Owner Data Sheet on page 3 for your records.

HYDRAULICS GUIDE

Hydraulic hose routing information is found on the Hydraulic Hose Port Guide label (shown below), located on the underside of the step plate with the FISHER® logo.



NOTE: The skid steer supply lines use special fittings that restrict the flow entering the block. Do not replace fittings with anything other than approved FISHER hydraulic fittings.

ACCESSORIES

SnoFoil® ASSEMBLY

The SnoFoil accessory improves visibility and plowing efficiency by deflecting light snow away from the windshield. This rigid, curved extension bolts to the top of the snowplow blade.

BLADE WINGS

Blade wings extend out and forward, increasing the length and improving the overall operating performance of the snowplow.

STEEL DEFLECTOR

One-piece deflector keeps fluffy snow from flowing over the top of the blade.

RUBBER DEFLECTOR

Flexible deflector keeps fluffy snow from flowing over the top of the blade. Two widths available.

REPLACEABLE CUTTING EDGES

Carbon Steel

Cutting edges made of high-carbon steel bolt to the base angle for maximum blade life. Depending on the blade series, cutting edges are 3/8", 1/2", and 5/8" thick and 6" or 8" wide.

Carbide Steel

Carbide steel edges provide superior durability and performance and longer wear compared to a traditional steel cutting edge. Unmatched wear resistance ensures long life and exceptional performance.

UHMW Polymer

Durable, 1"-thick cutting edges made of lightweight polymer absorb much of the shock and vibration when the blade encounters rough surfaces.

Rubber

6" cutting edges conform to the surface being plowed, making them perfect for concrete, parking garages, brick, pavers, cobblestone, and other sensitive or uneven surfaces. The tough, high-wear compound provides a clean and quiet "squeegee" action.

FISHER® EZ Flow HYDRAULIC FLUID

Improve the performance of hydraulic systems, especially in extremely cold weather, with FISHER EZ Flow hydraulic fluid. Special antiwear and antifoaming additives keep the system running longer and smoother.

ANTIWEAR SHOES

Antiwear shoes offer maximum protection against blade and/or base angle wear on rocky and/or abrasive surfaces such as hard pack and gravel.

WEAR/CURB SHOE KIT

These shoes offer two types of wear protection. The flat bottom section protects the cutting edge surface from wear against rough surfaces. An abrasion resistant material that extends beyond the edge of the snowplow protects the bottom edge of the blade from scraping against curbs and sidewalks.

CURB GUARD KIT

Designed to fit on the ends of the trip edge, curb guards protect the bottom edge of the blade from scraping against curbs and sidewalks.

TOUCH-UP PAINT

FISHER® touch-up paint is available to keep your snowplow protected from rust.

ATTACHING & DETACHING INSTRUCTIONS

⚠ WARNING

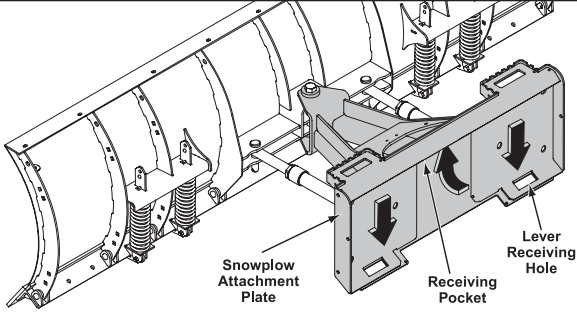
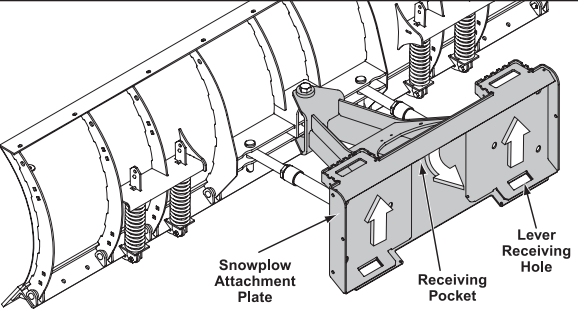



Keep 8 feet clear of the blade when it is being raised, lowered, or angled. Do not stand between vehicle and blade or directly in front of blade. If the blade hits or drops on you, you could be seriously injured.

Prior to operating your snowplow, review the Attach/Detach Instructions label (shown below) on the back left side of the moldboard.

NOTE: If at any time the Attach/Detach Instructions label or any other label attached to your snowplow becomes illegible, promptly replace it.

⚠ WARNING

Inspect snowplow components and fasteners for wear or damage whenever mounting or removing the snowplow. Worn or damaged components could allow the snowplow to drop unexpectedly.

Attach Read Owner's Manual for Complete Instructions.	Detach Read Owner's Manual for Complete Instructions.
 <p>Snowplow Attachment Plate</p> <p>Receiving Pocket</p> <p>Lever Receiving Hole</p>	 <p>Snowplow Attachment Plate</p> <p>Receiving Pocket</p> <p>Lever Receiving Hole</p>
<p> Follow skid steer labeling and Owner's Manual instructions.</p> <ul style="list-style-type: none">• Position the skid steer close to the snowplow and align the mount points on the skid steer plate with the snowplow attachment plate.• Tilt the skid steer plate forward and position the top edge of the plate under the receiving pocket on the top edge of the snowplow attachment plate.• Slowly raise the arms on the skid steer and tilt the skid steer plate toward the cab until the snowplow attachment plate is flush with the skid steer plate. Turn the engine OFF.• Engage both locking levers on the skid steer by rotating each handle 90° into a horizontal position. The skid steer locking levers shall insert into the snowplow lever receiving holes.• Attach all hydraulic hoses on the snowplow to the auxiliary hydraulic connections located on the skid steer. On some skid steer models, it may be necessary to initiate an auxiliary hydraulic switch on the skid steer prior to operating the snowplow. <p> Patents pending.</p>	<p>⚠ WARNING: Keep fingers away from snowplow and skid steer pinch points. </p> <ul style="list-style-type: none">• Lower the snowplow on a flat, level surface and turn the engine OFF.• Disconnect all hydraulic hoses on the snowplow from the auxiliary hydraulic connections located on the skid steer.• Disengage both locking levers on the skid steer by rotating each handle 90° into a vertical position. The skid steer locking levers shall withdraw from the snowplow lever receiving holes.• Turn the engine ON. Slowly lower the arms on the skid steer and tilt the skid steer plate forward away from the cab until the top edge of the skid steer plate clears the receiving pocket on the top edge of the snowplow attachment plate.• Back the skid steer away slowly. <p>57990.03</p>

OPERATING YOUR SNOWPLOW

TRANSPORTING SNOWPLOW

WARNING

Position the blade so it does not block the vehicle headlamp beams.

Do not change blade position while traveling. You could suddenly lower blade accidentally.

CAUTION

Transport speed should not exceed vehicle manufacturer's recommendations. Further reduce speed under adverse travel conditions.

These instructions are for driving short distances to and from plowing jobs. For longer trips, remove the snowplow from the vehicle, following recommended mechanical lifting cautions and procedures.

1. Completely raise the blade.
2. Adjust the blade height for maximum vehicle headlamp illumination.
3. Adjust the blade to the straight position.

DRIVING AND PLOWING ON SNOW AND ICE

CAUTION

Drinking then driving or plowing is very dangerous. Your reflexes, perceptions, attentiveness, and judgement can be affected by even a small amount of alcohol. You can have a serious or even fatal collision if you drive after drinking. Please do not drink and then drive or plow.

Refer to vehicle owner's manual instructions for driving in snow and ice conditions. Remember, when you drive on snow or ice, your wheels will not get good traction. You cannot accelerate as quickly, turning is more difficult, and you will need longer braking distance.

Wet and hard-packed snow or ice offers the worst traction. It is very easy to lose control. You will have difficulty accelerating. If you do get moving, you may have poor steering and difficult braking, which can cause you to slide out of control.

Here are some tips for driving in these conditions:

- Drive defensively.
- Do not drink, then drive or plow snow.
- Plow or drive only when you have good visibility for operating a vehicle.
- If you cannot see well due to snow or icy conditions, you will need to slow down and keep more space between you and other vehicles.
- Slow down, especially on higher-speed roads. Your headlamps can light up only so much road ahead.
- If you are tired, pull off in a safe place and rest.
- Keep your windshield and all glass on your vehicle clean to see around you.
- Dress properly for the weather. Wear layers of clothing; as you get warm, you can take off layers.

OPERATING YOUR SNOWPLOW

PLOWING SNOW

CAUTION

Wear a seat belt when plowing snow. Hidden obstructions could cause the vehicle to stop suddenly, resulting in personal injury.

CAUTION

Flag any obstructions that are hard to locate under snow to prevent damage to product or property.

CAUTION

Never stack snow with the blade angled. This could damage the snowplow.

CAUTION

Plowing speed should not exceed 10 mph (16 km/h).

NOTE: Only the driver should be in the vehicle cab when the snowplow is attached.

General Instructions

1. Before plowing, make sure you know of any obstructions hidden beneath the snow, such as bumper stops in parking lots, curbs, sidewalk edges, shrubs, fences, or pipes sticking up from the ground. If unfamiliar with the area to be plowed, have someone familiar with the area point out obstacles.
2. If possible and you have good visibility, plow during the storm rather than letting snow accumulate.
3. Do not exceed 10 mph (16 km/h) when plowing snow.

Hard-Packed Snow

1. Raise the disc shoes (if so equipped) so that the cutting edge comes into direct contact with the pavement.
2. Use the lowest gear to place maximum power behind the cutting edge.
3. An angled blade is more effective for removing hard-packed snow.

Deep Snow

1. Shear off top layers by plowing with the blade raised 3 to 4 inches for the initial pass.
2. Bite into the edges using only partial blade width until the job is cut down to size for full-blade plowing.

Rule of thumb:

6" of snow — Plow with entire blade width.

9" of snow — Plow with 3/4 blade width.

12" of snow — Plow with 1/2 of the blade.

Experience and "feel" are the best guides.

3. When plowing deep snow, be sure to keep the vehicle moving.
4. For increased traction, use tire chains where legal.

OPERATING YOUR SNOWPLOW

Clearing Driveways

1. Head into the driveway with the blade angled and plow the snow away from any buildings. Widen the driveway by rolling snow away from any buildings.
2. If a building is at the end of the driveway, plow to within a vehicle length of the building. Push as much snow as possible off the driveway.
3. With a raised blade, drive through the remaining snow to the building. Drop the blade and "back drag" snow away from the building at least one vehicle length. Repeat if necessary.
4. Back the vehicle to the building and plow forward, removing the remaining snow from the driveway. Check municipal ordinances for proper disposal of snow.

Clearing Parking Lots

1. Clear areas in front of buildings first. With the blade raised, drive up to the building. Drop the blade and "back drag" the snow away from the building. When snow is clear of the buildings, turn the vehicle around and push snow away from the buildings toward the outer edges of the lot.
2. Plow a single path down the center in the lengthwise direction.
3. With the blade in the angled position, plow successive strips lengthwise until the area is cleared and snow is "stacked" around the outer edges.
4. If snow is too deep to clear in the above manner, clear the main traffic lanes as much as possible. Check municipal ordinances for proper disposal of snow.

PARKING WITH SNOWPLOW ATTACHED

WARNING

Lower the blade when the vehicle is parked. Keep 8 feet clear of the blade when it is being raised, lowered, or angled. Temperature changes could change hydraulic pressure, causing the blade to drop unexpectedly or damaging hydraulic components. Failure to do this could result in serious personal injury.

Whenever you park your vehicle, completely lower the blade to the ground.

TOWING A DISABLED OR STUCK VEHICLE

Do not use any snowplow components as an attaching point when retrieving, towing, or winching a disabled or stuck vehicle.

MAINTENANCE

WARNING

Lower the blade when the vehicle is parked. Keep 8 feet clear of the blade when it is being raised, lowered, or angled. Temperature changes could change hydraulic pressure, causing the blade to drop unexpectedly or damaging hydraulic components. Failure to do this could result in serious personal injury.

Your FISHER® snowplow is designed for rugged, dependable service. However, like the vehicle on which it is mounted, it needs regular care and maintenance.

DURING THE PLOWING SEASON

Check the following before and frequently during the plowing season:

- Make sure all fasteners, mounting bolts, and hydraulic connections are tight. Pay particular attention to the 1" pivot bolt.
- Check all plugs and seals for hydraulic fluid leaks. Repair as necessary.
- If the powder-coated finish on the blade or mounting plate is nicked or scratched, repair the surface and paint with FISHER yellow or black paint.

PRESEASON CHECK

Before the snow season, check your equipment to make sure it's in working condition.

- Replace worn or damaged parts.
- Check all mounting points and tighten fasteners on both snowplow and vehicle. Verify that all cotter pins are in place.
- Repaint blade assembly, as necessary, to protect the metal. FISHER® yellow or black paint is available in aerosol or quart cans.
- Install auxiliary and flashing lights for compliance and visibility in accordance with local regulations.
- Check vehicle headlamps, auxiliary lights, heater, and windshield wipers for proper operation.
- Inspect and test your battery. Recharge or replace as necessary.
- Ballast may be necessary, or beneficial, on some vehicles to provide maximum traction, braking, and handling.
- Any ballast material (such as sand and blocks) must be solidly secured to the vehicle to prevent it from moving under harsh plowing conditions.

POSTSEASON MAINTENANCE

- Clean and paint blade and components as needed.
- Apply general purpose petroleum grease to the exposed chrome surfaces of the rams to prevent rust.
- Lubricate all pivot points with general purpose petroleum grease.

MAINTENANCE

HYDRAULIC HOSE AND FITTING REPLACEMENT

WARNING

Lower the blade when the vehicle is parked. Keep 8 feet clear of the blade when it is being raised, lowered, or angled. Temperature changes could change hydraulic pressure, causing the blade to drop unexpectedly or damaging hydraulic components. Failure to do this could result in serious personal injury.

DO NOT use any type of sealant or tape on the fittings or hoses. This could damage the product. Follow recommended replacement procedures for fittings and hoses.

1. Lower the snowplow completely.
2. Carefully note hose routing for proper reassembly.
3. Loosen hoses or fittings slowly to relieve any residual pressure.
4. To remove a hose, loosen and unscrew the hose flare nut from the fitting.
5. To remove a fitting, loosen the jam nut and unscrew the fitting from the port.

Installing Hydraulic Fittings and Hoses

NOTE: Overtightening JIC hose fitting ends will result in a fractured fitting.

DO NOT use any type of sealant or tape on the fittings or hoses. This could damage the product. Always use two wrenches to ensure proper tightening of fittings and hoses.

Use the following procedure to install SAE O-ring fittings in valve block and rams:

1. Turn the jam nut on the fitting as far back as possible.
2. Lubricate the O-ring with clean hydraulic fluid.
3. Screw the fitting into the port by hand until the washer contacts the port face and shoulder of the jam nut threads.
4. Unscrew the fitting to proper position, no more than one full turn.
5. Using two wrenches, hold the fitting body in position and tighten the jam nut until the washer again contacts the port face, then tighten an additional 1/8 to 1/4 turn to lock the fitting in place. Final torque on the jam nut should be approximately 20 ft-lb.

Use the following procedure to install hydraulic hoses:

1. Screw the flare nut onto the fitting flare and hand tighten.
2. Align the hose so there are no twists or sharp bends and so it will not be pinched or pulled by moving parts.
3. Hold the hose in position with a pair of adjustable pliers and use a wrench to tighten the flare nut 1/8–1/4 turn beyond hand tight. Final torque on the flare nut should be approximately 20 ft-lb.
4. Reinstall any protective hose wraps in their original positions.

Once all parts are installed, top off the hydraulic fluid level as recommended by the skid steer manufacturer.

MAINTENANCE

VEHICLE

The snowplow operating vehicle shall be maintained according to manufacturer's recommendations. Tire pressure shall be maintained according to manufacturer's recommendation.

RECYCLE

When your snowplow has performed its useful life, the majority of its components can be recycled as steel or aluminum. Hydraulic fluid shall be disposed according to local regulations. Balance of parts made of plastic shall be disposed of in a customary manner.

BLADE FINISH

If the powder-coated finish on the blade and mounting plate is nicked or scratched, repair the surface with FISHER® yellow or black paint (available in aerosol or quart cans from your FISHER outlet).

TOOLS

We suggest that you keep the following items in your vehicle for emergency use:

- 10" adjustable wrench
- Pliers (locking, adjustable, etc.)
- Medium screwdriver
- 11/16" open-end wrench
- 3/4" open-end wrench
- Miscellaneous fasteners

PARTS

Always use FISHER designed and tested replacement parts.

TROUBLESHOOTING

If you have followed all the guidelines listed in the Maintenance Section of this manual and cannot resolve issues with the operation of your FISHER snowplow, contact one of our authorized outlets for repair information or visit us online at www.fisherplows.com. Our website has a complete listing of authorized outlets in your area as well as a complete library of Parts Lists, Mechanic's Guides, and service information to assist the qualified mechanic with repair.

Fisher Engineering does not recommend repairs by other than our factory-trained outlets. Failure to use an authorized outlet could affect the warranty coverage on your snowplow.





Fisher Engineering
50 Gordon Drive
Rockland, ME 04841-2139
www.fisherplows.com

A DIVISION OF FISHER, LLC



This product conforms to EU Machinery Directive 2006/42/EC and Directive 2011/65/EC (RoHS2).

Copyright © 2016 Douglas Dynamics, LLC. All rights reserved. This material may not be reproduced or copied, in whole or in part, in any printed, mechanical, electronic, film, or other distribution and storage media, without the written consent of Fisher Engineering. Authorization to photocopy items for internal or personal use by Fisher Engineering outlets or snowplow owner is granted.

Fisher Engineering reserves the right under its product improvement policy to change construction or design details and furnish equipment when so altered without reference to illustrations or specifications used. Fisher Engineering or the vehicle manufacturer may require or recommend optional equipment for snow removal. Do not exceed vehicle ratings with a snowplow. Patents pending. Fisher Engineering offers a limited warranty for all snowplows and accessories. See separately printed page for this important information. The following are registered (®) or unregistered (™) trademarks of Douglas Dynamics, LLC: FISHER®, HD2™, HDX™, SnoFoil®™.

Printed in U.S.A.