



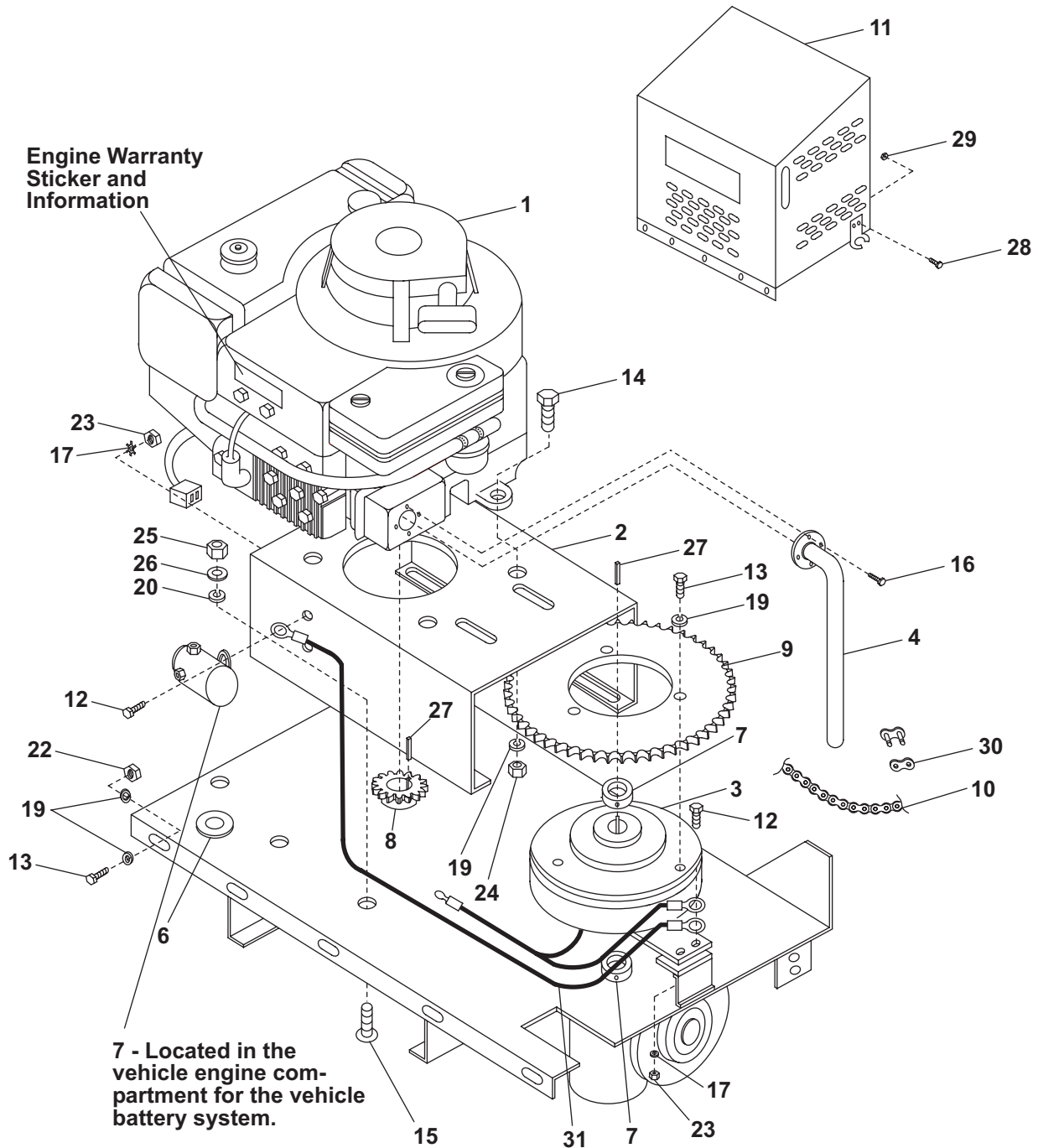
FISHER ENGINEERING

P.O. Box 529, Rockland, ME 04841

Briggs and Stratton Engine Drive Regular Capacity - Parts List

November 1, 1999

Form No. 68916



This parts list is for FISHER® Hopper Spreaders with serial numbers
4764 and higher.

- over -

Briggs and Stratton Engine Drive - Regular Capacity - Parts List

Briggs and Stratton Engine Drive – Regular Capacity – Parts List							
Item	Part	Qty	Description	Item	Part	Qty	Description
1	9106	1	8.5 Horsepower Engine	18	90359	3	1/4" Lock Washer Zinc Plated
2	20084	1	Engine Mount Regular Capacity	18	91017	3	1/4" Lock Washer Stainless Steel
3	9207	1	Electric Clutch	19	90360	6	5/16" Lock Washer Stainless Steel
4	9000	1	Tubular Exhaust Extension	20	90361	6	3/8" Lock Washer Zinc Plated
5	20136	1	Relay – Hopper Spreader	20	91007	6	3/8" Lock Washer Stainless Steel
6	9221	1	Rubber Grommet, 1"	21	90980	10	5/16" Plain Washer Stainless Steel
7	9206	2	Locking Collar, 1"	22	90987	4	5/16" Hex Locknut Stainless Steel
8	9209	1	Sprocket, #40 x 12T x 1" ID	23	90330	3	1/4"-20 Hex Nut Zinc Plated
9	9202	1	Sprocket, Clutch - #40 x 52T	23	91019	3	1/4"-20 Hex Nut Stainless Steel
10	68350	1	#40 Roller Chain, 29.5" Long	24	90332	4	5/16"-18 Hex Nut Zinc Plated
11	68373	1	Engine Cover Regular Capacity Mild Steel	24	90988	4	5/16"-18 Hex Nut Stainless Steel
11	68499	1	Engine Cover Regular Capacity Stainless Steel	25	90334	6	3/8"-16 Hex Nut Zinc Plated
12	90461	3	1/4"-20 x 3/4" Hex Cap Screw Zinc Plated	25	91008	6	3/8"-16 Hex Nut Stainless Steel
12	91012	3	1/4"-20 x 3/4" Hex Cap Screw Stainless Steel	26	90315	4	3/8" Plain Washer Zinc Plated
13	90974	7	5/16"-18 x 3/4" Hex Cap Screw Stainless Steel	26	91006	4	3/8" Plain Washer Stainless Steel
14	90054	4	5/16"-18 x 1-1/2" Hex Cap Screw Zinc Plated	27	9166	2	Machine Key, 1/4" Square x 1-1/2"
15	90965	4	3/8"-16 x 1" Carriage Bolt Zinc Plated	28	67092	4	#10-24 x 1/2" Socket Button Head Cap Screw Stainless Steel
15	91023	6	3/8"-16 x 1" Carriage Bolt Stainless Steel	29	91330	4	#10-24 Hex Locknut Stainless Steel
16	91160	6	#8-18 x 3/8" Lock Screw Zinc Plated	30	20353	1	#40 Roller Chain Master Link
17	91031	3	1/4" External Tooth Lock Washer Zinc Plated	31	67241	1	Clutch Ground Wire
17	67083	3	1/4" External Tooth Lock Washer Stainless Steel				

Copyright© 1999 Douglas Dynamics, L.L.C. All rights reserved. This material may not be reproduced or copied, in whole or in part, in any printed, mechanical, electronic, film or other distribution and storage media, without the written consent of Fisher Engineering. Authorization to photocopy items for internal or personal use by Fisher Engineering outlets is granted.

Fisher Engineering reserves the right under its product improvement policy to change construction or design details and furnish equipment when so altered without reference to illustrations or specifications used herein. Fisher Engineering and the vehicle manufacturer may require and/or recommend optional equipment for hopper spreaders. Fisher Engineering offers a limited warranty for all hopper spreaders and accessories. See separately printed page for this important information. The following is a registered® trademark of Douglas Dynamics, L.L.C.: FISHER®.

Printed in USA