



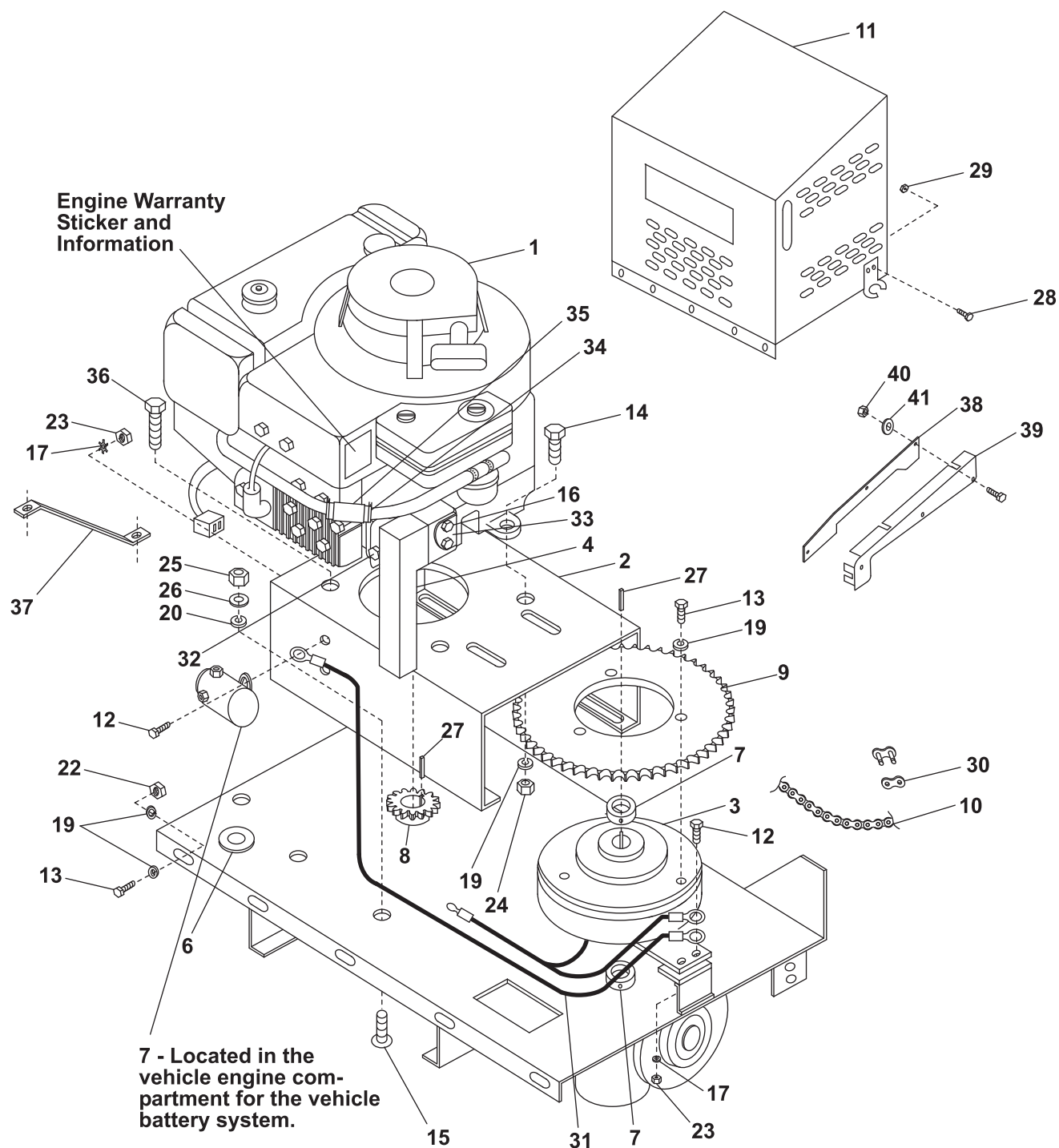
FISHER ENGINEERING

50 Gordon Drive, Rockland, ME 04841-2139 www.fisherplows.com

Tecumseh Engine Drive Regular Capacity - Parts List

March 1, 2013

Lit. No. 68959, Rev. 04



This parts list is for FISHER® Hopper Spreaders with serial numbers
4809 and higher.

Tecumseh Engine Drive - Regular Capacity - Parts List

| Tecumseh Engine Drive – Regular Capacity – Parts List | | | | | | | |
|---|-------|-----|------------------------------------|------|-------|-----|--|
| Item | Part | Qty | Description | Item | Part | Qty | Description |
| 1 | 68805 | 1 | Horsepower Engine | 22 | 90987 | 4 | 5/16" Hex Locknut SS |
| 2 | 65356 | 1 | Engine Mount Regular Capacity | 23 | 90330 | 3 | 1/4-20 Hex Nut |
| 3 | 65212 | 1 | Electric Clutch | 23 | 91019 | 3 | 1/4-20 Hex Nut SS |
| 4 | 68855 | 1 | Muffler | 24 | 90332 | 4 | 5/16-18 Hex Nut |
| 5 | 20136 | 1 | Relay – Hopper Spreader | 24 | 90988 | 4 | 5/16-18 Hex Nut SS |
| 6 | 9221 | 1 | Rubber Grommet, 1" | 25 | 90334 | 6 | 3/8-16 Hex Nut |
| 7 | 65211 | 2 | Locking Collar, 1" | 25 | 91008 | 6 | 3/8-16 Hex Nut SS |
| 8 | 9209 | 1 | Sprocket, #40 x 12T x 1 ID | 26 | 90315 | 4 | 3/8" Plain Washer |
| 9 | 65209 | 1 | Sprocket, Clutch - #40 x 52T | 26 | 91006 | 4 | 3/8" Plain Washer SS |
| 10 | 68350 | 1 | #40 Roller Chain, 29.5" Long | 27 | 9166 | 2 | Machine Key, 1/4" Square x 1-1/2" |
| 11 | 68373 | 1 | Engine Cover Regular Capacity MS | 28 | 67092 | 4 | #10-24 x 1/2 Socket Button Head Cap Screw SS |
| 11 | 68499 | 1 | Engine Cover Regular Capacity SS | 29 | 91330 | 4 | #10-24 Hex Locknut SS |
| 12 | 90461 | 6 | 1/4-20 x 3/4 Hex Cap Screw | 30 | 20353 | 1 | #40 Roller Chain Master Link |
| 12 | 91012 | 9 | 1/4-20 x 3/4 Hex Cap Screw SS | 31 | 67241 | 1 | Clutch Ground Wire |
| 13 | 90974 | 7 | 5/16-18 x 3/4 Hex Cap Screw SS | 32 | 68848 | 1 | Muffler Bolt |
| 14 | 90054 | 3 | 5/16-18 x 1-1/2 ex Cap Screw | 33 | 68847 | 1 | Muffler Bolt Retainer |
| 15 | 90965 | 4 | 3/8-16 x 1 Carriage Bolt | 34 | 68862 | 2 | Clamp |
| 15 | 91023 | 6 | 3/8-16 x 1 Carriage Bolt SS | 35 | 68861 | 1 | Inline Fuel Filter |
| 16 | 68846 | 2 | Muffler Bolt | 36 | 90067 | 1 | 5/16-18 x 2 Hex Cap Screw |
| 17 | 91031 | 3 | 1/4" External Tooth Lock Washer | 37 | 68854 | 1 | Engine Mount Brace |
| 17 | 67083 | 3 | 1/4" External Tooth Lock Washer SS | 38 | 94522 | 1 | Engine Cover Baffle |
| 18 | 90359 | 3 | 1/4" Lock Washer | 39 | 94532 | 1 | Engine Cover Baffle Extension |
| 18 | 91017 | 3 | 1/4" Lock Washer SS | 40 | 67076 | 6 | 1/4-20 Hex Locknut SS |
| 19 | 90360 | 6 | 5/16" Lock Washer SS | | | | |
| 21 | 90980 | 10 | 5/16" Plain Washer SS | | | | |
| SS = Stainless Steel | | | | | | | |

Copyright © 2013 Douglas Dynamics, LLC. All rights reserved. This material may not be reproduced or copied, in whole or in part, in any printed, mechanical, electronic, film or other distribution and storage media, without the written consent of Fisher Engineering. Authorization to photocopy items for internal or personal use by Fisher Engineering outlets or spreader owner is granted.

Fisher Engineering reserves the right under its product improvement policy to change construction or design details and furnish equipment when so altered without reference to illustrations or specifications used. Fisher Engineering or the vehicle manufacturer may require or recommend optional equipment for spreaders. Fisher Engineering offers a limited warranty for all spreaders and accessories. See separately printed page for this important information. The following is a registered (®) trademark of Douglas Dynamics, LLC: FISHER®.

Printed in U.S.A.