



Fisher Engineering

85450

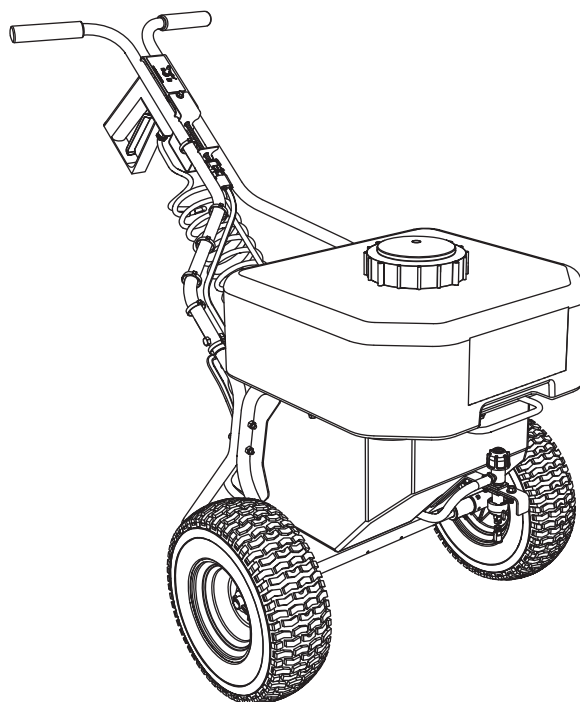
50 Gordon Drive, Rockland, Maine 04841-2139 • www.fisherplows.com

March 15, 2019
Lit. No. 76653, Rev. 01

Walk-Behind Sprayer

SS-120

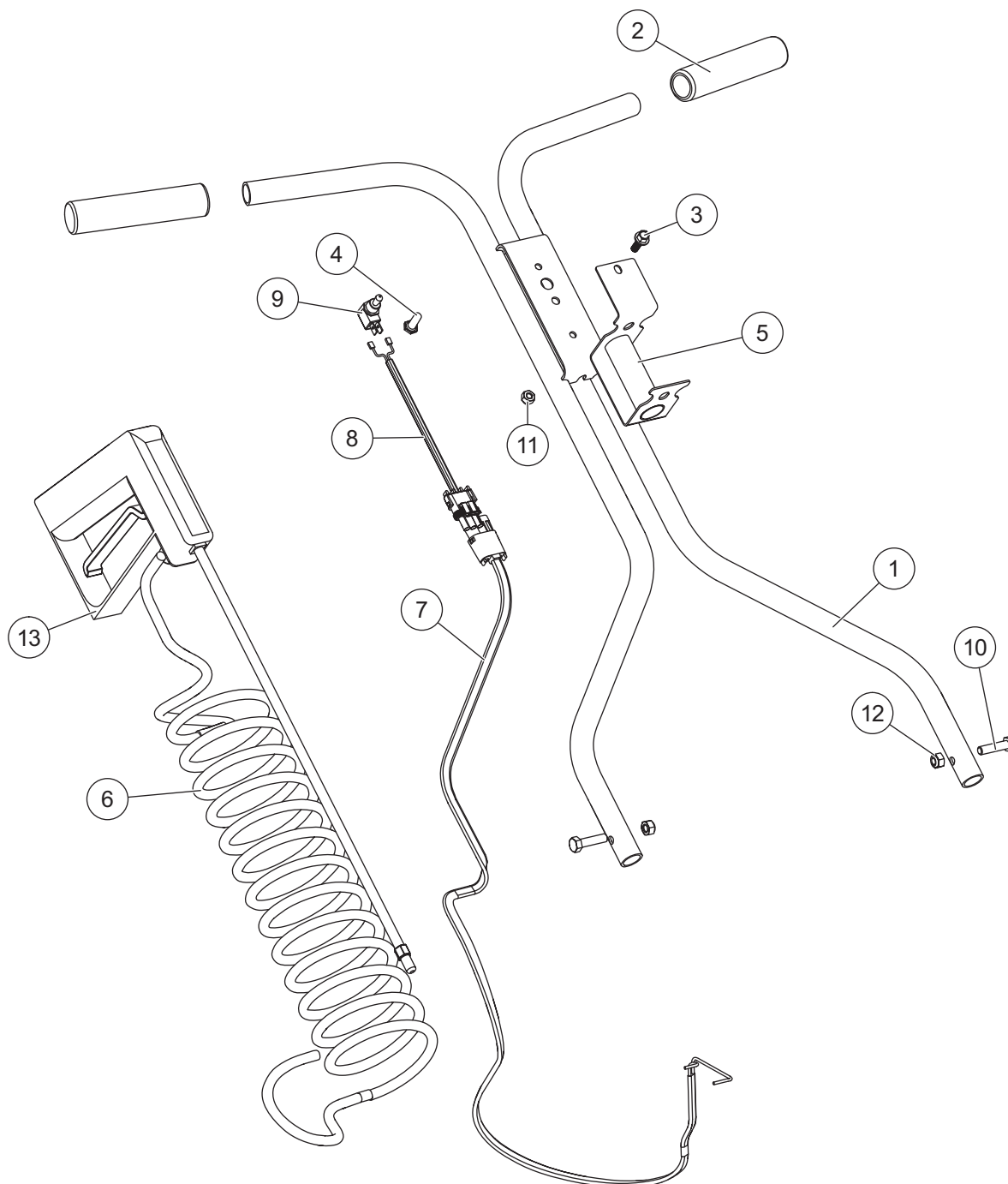
Parts List



This manual is for FISHER® walk-behind sprayers with serial numbers beginning with 170301 and higher.

SS-120 WALK-BEHIND SPRAYER

HANDLE ASSEMBLY

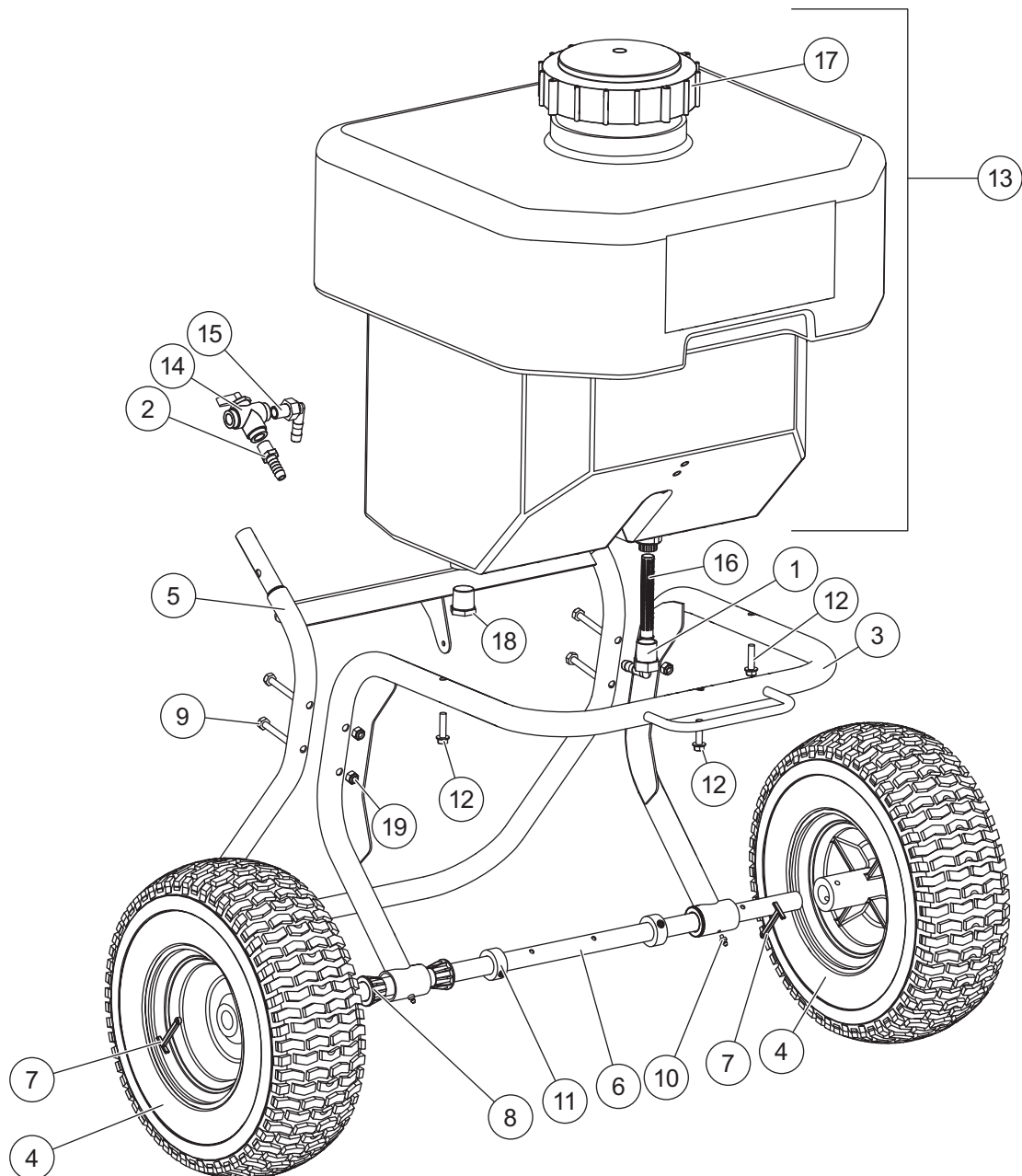


SS-120 WALK-BEHIND SPRAYER

Handle Assembly Components							
Item	Part	Qty	Description	Item	Part	Qty	Description
1	50912	1	Handle	7	11252	1	Pump Harness
2	50917	2	Handle Grip	8	11253	1	Switch Harness
3	51031	1	1/4-20 x 3/4 Serrated Flange Hex Cap Screw SS	9	11254	1	Switch
4	11236	1	Rubber Switch Boot	10	11257	2	5/16-18 x 1-1/4 Hex Cap Screw SS
5	11239	1	Wand Bracket	11	50970	1	1/4-20 Locknut SS
6	11246	1	Coil Hose	12	50971	2	5/16-18 Locknut SS
				13	11261	1	Spot Spray Wand
SS = Stainless Steel							

SS-120 WALK-BEHIND SPRAYER

TANK ASSEMBLY

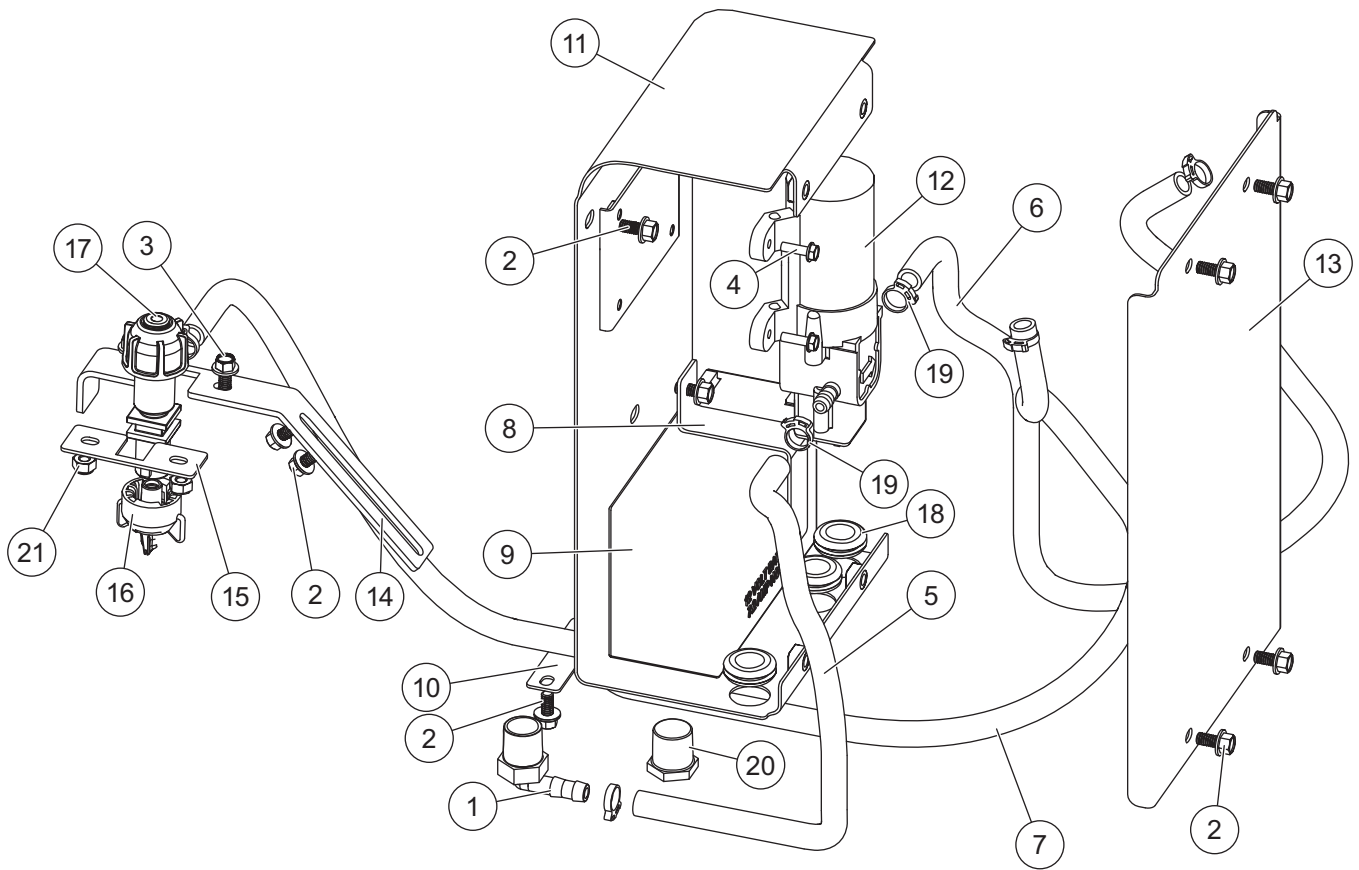


SS-120 WALK-BEHIND SPRAYER

Tank Assembly Components							
Item	Part	Qty	Description	Item	Part	Qty	Description
1	11233	1	1/2 Male Thread x 3/8 90° Hose Barb	11	50965	2	Shaft Collar
2	11234	1	1/4 Male Thread x 3/8 Hose Barb	12	11237	3	1/4-20 x 1 Serrated Flange Hex Cap Screw SS
3	11235	1	Hopper Frame	13	11151	1	Tank (incl. item 17)
4	50907	2	13 x 5 Wheel	14	11247	1	Panel Mount Valve
5	50909	1	Frame Stand	15	11249	1	1/4 Male Thread x 3/8 90° Hose Barb
6	50915	1	Axle	16	11255	1	Tank Strainer
7	50933	2	2" Cotter Pin SS	17	11259	1	Tank Lid, 6" Vented
8	50935	4	Wheel Bushing	18	11260	1	1/2 Pipe Plug
9	50948	4	1/4-20 x 2-1/4 Hex Cap Screw SS	19	50970	4	1/4-20 Locknut SS
10	50964	2	Grease Fitting				
SS = Stainless Steel							

SS-120 WALK-BEHIND SPRAYER

PUMP ASSEMBLY

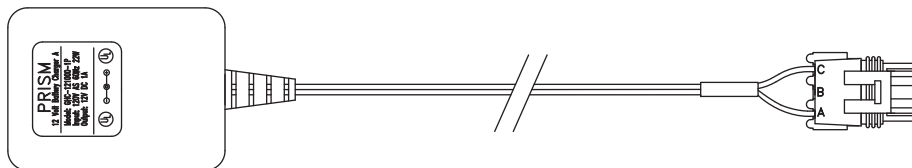


SS-120 WALK-BEHIND SPRAYER

Pump Assembly Components							
Item	Part	Qty	Description	Item	Part	Qty	Description
1	11233	1	1/2 Male Thread x 3/8 90° Hose Barb	10	11241	1	Hose Guide
2	51030	11	1/4-20 x 1/2 Serrated Flange Hex Cap Screw SS	11	11242	1	Pump Enclosure
3	51031	2	1/4-20 x 3/4 Serrated Flange Bolt Cap Screw SS	12	11243	1	Pump
4	51039	4	#10-32 x 5/8 Serrated Flange Bolt Cap Screw SS	13	11244	1	Pump Enclosure Cover
5	10823	1	Hose, 3/8 x 16.5	14	11245	1	Inside Nozzle Body Bracket
6	10823	1	Hose, 3/8 x 30	15	11248	1	Outside Nozzle Body Bracket
7	10823	1	Hose, 3/8 x 40	16	11250	1	Push Sprayer Nozzle
8	11238	1	Battery Bracket	17	11251	1	Nozzle Body
9	11240	1	Battery	18	11256	3	Rubber Grommet
				19	11258	6	3/8 Hose Clamp
				20	11260	1	1/2 Pipe Plug
				21	50970	2	1/4-20 Locknut SS

SS = Stainless Steel

ELECTRICAL ACCESSORY



Electrical Accessory		
Part	Qty	Description
11145	1	Battery Charger, 110V AC/12V DC

SS-120 WALK-BEHIND SPRAYER



Fisher Engineering
50 Gordon Drive
Rockland, ME 04841-2139
www.fisherplows.com

A DIVISION OF FISHER, LLC

Copyright © 2019 Douglas Dynamics, LLC. All rights reserved. This material may not be reproduced or copied, in whole or in part, in any printed, mechanical, electronic, film or other distribution and storage media, without the written consent of Fisher Engineering. Authorization to photocopy items for internal or personal use by Fisher Engineering outlets or sprayer owner is granted.

Fisher Engineering reserves the right under its product improvement policy to change construction or design details and furnish equipment when so altered without reference to illustrations or specifications used. Fisher Engineering may require or recommend optional equipment for sprayers. Fisher Engineering offers a limited warranty for all sprayers and accessories. See separately printed page for this important information. The following is a registered (®) trademark of Douglas Dynamics, LLC: FISHER®.

Printed in U.S.A.