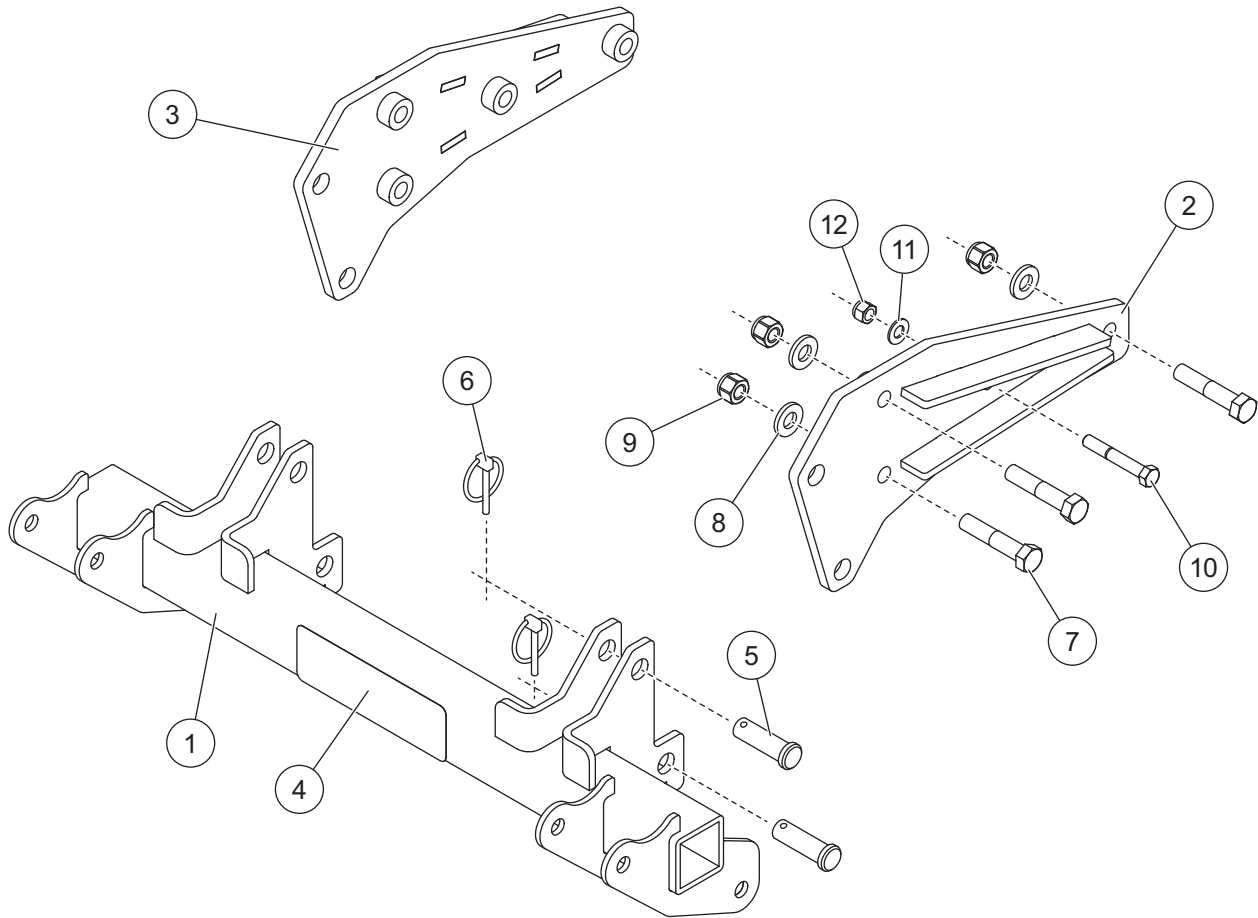


**PARTS LIST**



| 35301 Mount Kit |       |     |                                     |           |        |     |                                 |
|-----------------|-------|-----|-------------------------------------|-----------|--------|-----|---------------------------------|
| Item            | Part  | Qty | Description                         | Item      | Part   | Qty | Description                     |
| 1               | 78791 | 1   | Mount Beam                          | ns        | 74077  | 1   | Jumper Connector, 4-Position    |
| 2               | 78792 | 1   | Side Plate, Left                    | ns        | 28587  | 1   | Vehicle Control Harness         |
| 3               | 78793 | 1   | Side Plate, Right                   | ns        | 61548K | 1   | Plug Cover Kit                  |
| 4               | 77506 | 1   | Label – Caution, Tractor RMV Loader | ns        | 90730  | 1   | Fuse Kit, 200A                  |
| 5               | 50601 | 4   | 5/8 x 2 Clevis Pin                  | ns        |        | 12  | Cable Tie                       |
| 6               | 93042 | 4   | 3/16 Linchpin                       | ns        |        | 1   | Heat Shrink Tubing              |
| ns              | 78795 | 1   | Bolt Bag                            | ns        |        | 1   | Splice Package                  |
| ns              | 72168 | 1   | Vehicle Cable Assembly              |           |        |     |                                 |
| 78795 Bolt Bag  |       |     |                                     |           |        |     |                                 |
| 7               |       | 6   | 1/2-13 x 2-1/2 Hex Cap Screw G5     | 10        |        | 2   | 3/8-16 x 2-1/2 Hex Cap Screw G8 |
| 8               |       | 6   | 1/2 Hardened Flat Washer Type 1     | 11        |        | 2   | 3/8 Flat Washer Type A Narrow   |
| 9               |       | 6   | 1/2-13 Hex Locknut GB               | 12        |        | 2   | 3/8-16 Hex Locknut GB           |
| ns = not shown  |       |     |                                     | G = Grade |        |     |                                 |

Copyright © 2021 Douglas Dynamics, LLC. All rights reserved. This material may not be reproduced or copied, in whole or in part, in any printed, mechanical, electronic, film, or other distribution and storage media, without the written consent of the company. Authorization to photocopy items for internal or personal use by the company's outlets or snowplow owner is granted.

The company reserves the right under its product improvement policy to change construction or design details and furnish equipment when so altered without reference to illustrations or specifications used. This equipment manufacturer or the vehicle manufacturer may require or recommend optional equipment for snow removal. Do not exceed vehicle ratings with a snowplow. The company offers a limited warranty for all snowplows and accessories. See separately printed page for this important information.

**Printed in U.S.A.**

---