



Fisher Engineering

50 Gordon Drive, Rockland, Maine 04841-2139 • www.fisherplows.com

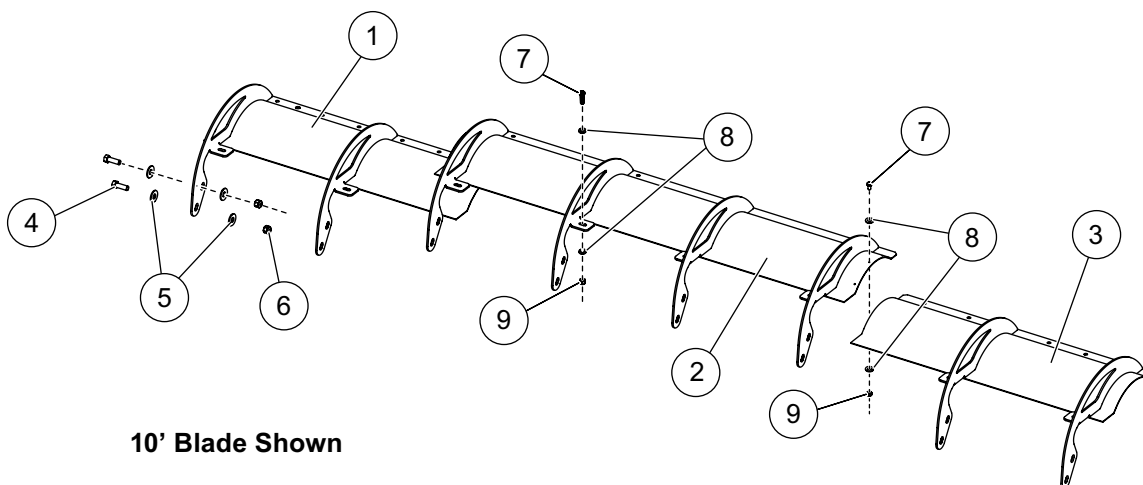
57434, 57523

June 15, 2018
Lit. No. 96311, Rev. 00

SnoFoil® Assemblies

9' & 10' HC Blades

PARTS LIST



10' Blade Shown

57523 / 57434 SnoFoil Assemblies – 9' & 10' Blades							
Item	Part	Qty	Description	Item	Part	Qty	Description
1	57431	1	SnoFoil HC – DS (10' Blade)	3	57432	1	SnoFoil HC – PS (10' Blade)
ns	57519	1	SnoFoil HC – DS (9' Blade)	ns	57522	1	SnoFoil HC – PS (9' Blade)
2	57433	1	SnoFoil HC – Center (9' & 10' Blade)	ns	76867	1	Bolt Bag
76867 Bolt Bag							
4		16	1/2-13 x 1-1/2 Hex Cap Screw G5	7		14	3/8-16 x 1 Hex Cap Screw G5
5		32	1/2 Flat Washer	8		28	3/8 Hardened Flat Washer
6		16	1/2-13 Hex Locknut GB	9		14	3/8-16 Hex Locknut GB
ns = not shown				G = Grade			

⚠ WARNING

Do not exceed GVWR or GAWR, including blade and ballast. The rating label is found on the driver-side vehicle door cornerpost.

⚠ CAUTION

Read this document before installing the SnoFoil assembly.

⚠ CAUTION

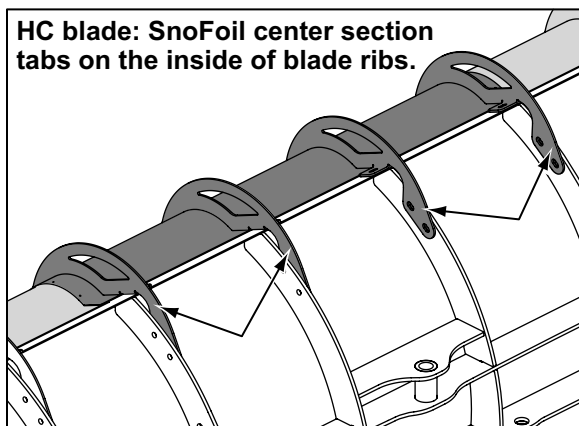
Use standard methods and practices when attaching snowplow and installing accessories, including proper personal protective safety equipment.

⚠ CAUTION

See your FISHER® outlet/website for specific vehicle application recommendations before installation. SnoFoil assembly weight information may be found in the eMatch selection system.

INSTALLATION INSTRUCTIONS

1. Park the vehicle on a smooth, level, hard surface, such as concrete. Lower the blade to the ground, and turn the control OFF. Disconnect the snowplow from the vehicle, or turn the vehicle ignition to the "OFF" position and remove the key.
2. Place the passenger- and driver-side SnoFoil® sections on top of the blade, aligning their edges with the ends of the blade. Place the center SnoFoil section on top of the side sections, positioning the attachment tabs as shown below.



3. Install the SnoFoil assembly to the blade ribs using one 1/2" x 1-1/2" hex cap screw, two 1/2" washers, and one 1/2" hex locknut at each rib connection. The washers should be placed outside the slotted holes on both the blade ribs and the SnoFoil attachment tabs. Hand tighten.
4. Install the SnoFoil assembly to the top of the blade using a 3/8" x 1" hex cap screw, two 3/8" washers, and a 3/8" hex locknut at each attachment point.
5. Fully tighten all 3/8" fasteners to 31 ft-lb and all 1/2" fasteners to 75 ft-lb.
6. Clamp the overlapping sections of the SnoFoil assembly together. Using the holes in the center section as a guide, drill 11/32" holes through the side sections.
7. Fasten the SnoFoil sections together using a 3/8" x 1" hex cap screw, two 3/8" washers, and a 3/8" locknut at each hole.
8. Tighten fasteners to 31 ft-lb.

⚠ WARNING

Do not block headlamp beams.

Copyright © 2018 Douglas Dynamics, LLC. All rights reserved. This material may not be reproduced or copied, in whole or in part, in any printed, mechanical, electronic, film, or other distribution and storage media, without the written consent of Fisher Engineering. Authorization to photocopy items for internal or personal use by Fisher Engineering outlets or snowplow owner is granted.

Fisher Engineering reserves the right under its product improvement policy to change construction or design details and furnish equipment when so altered without reference to illustrations or specifications used. Fisher Engineering or the vehicle manufacturer may require or recommend optional equipment for snow removal. Do not exceed vehicle ratings with a snowplow. Fisher Engineering offers a limited warranty for all snowplows and accessories. See separately printed page for this important information. The following are registered (®) or unregistered (™) trademarks of Douglas Dynamics, LLC: FISHER®, SnoFoil®.

Printed in U.S.A.