



Fisher Engineering

P.O. Box 529 Rockland, Maine 04841

**8445
8446-1
27255**

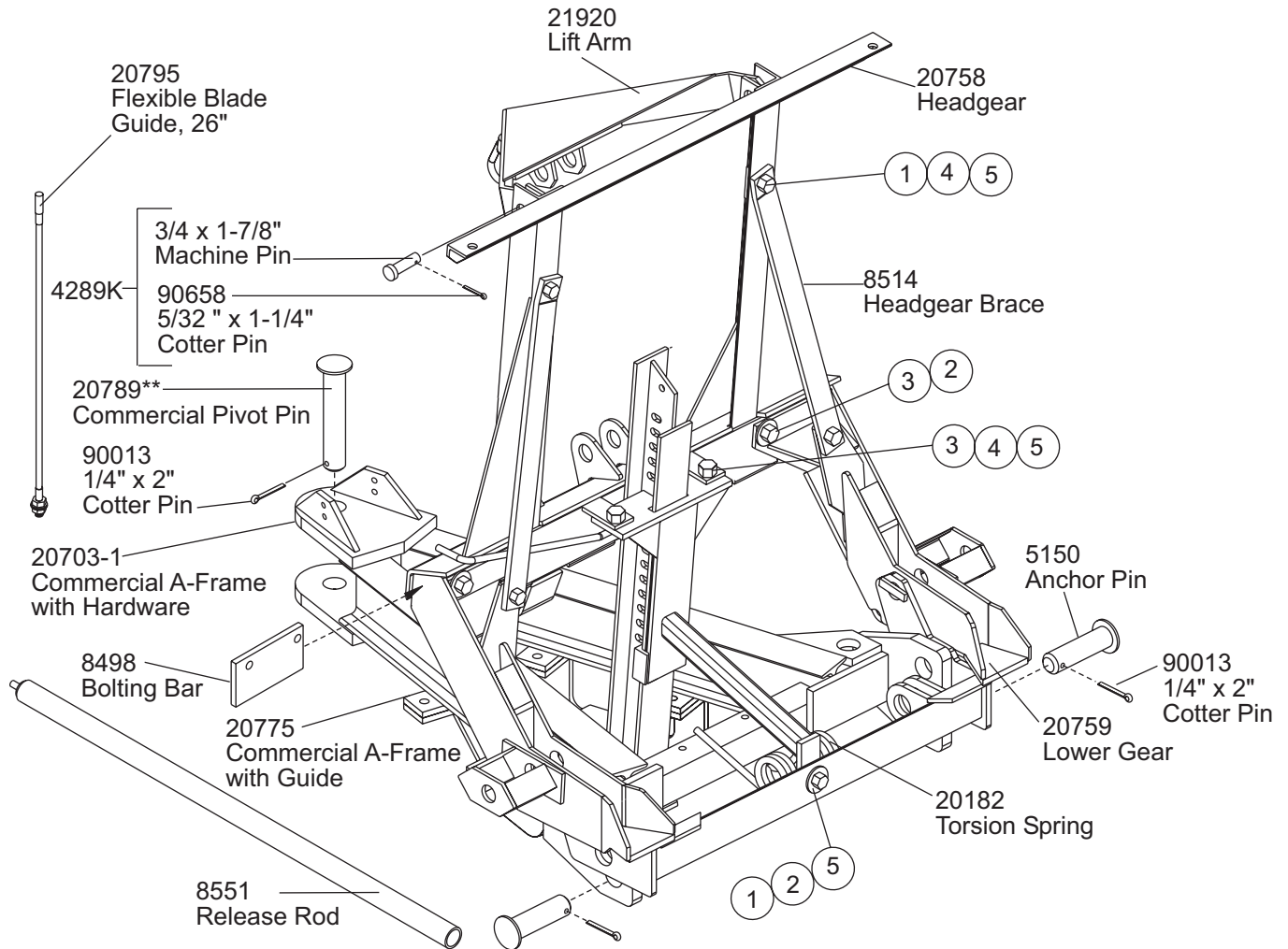
March 4, 2002
Lit. No. 20796



Commercial Common Attachments Parts List and Diagrams

Headgear Kit - 8445					
Part #	Qty Req	Description	Part #	Qty Req	Description
20759	1	Lower Gear	20786	1	Bolt Bag
20758	1	Head Gear	95228	1	Small Parts Kit, 8445
21920	1	Lift Arm	95228 Small Parts Kit		
8514	2	Head Gear Brace (19-3/4 OAL)	20795	2	Flexible Blade Guide – 26"
21851	1	Chain 3/8 x 108"	20182	1	Torsion Spring
20488	1	Jack Support - HD	8499	1	Jack Lever- RD & HD
20491	1	Jack Leg - HD	8498	2	Bolting Bar
8551	1	Release Rod – HD & RD	20244	1	Torsion Spring Stop Kit
A-Frame Kit – 8446-1					
20703-1	1	Commercial A-Frame w/ Hardware	20702	1	Angle Frame – MC w/ Hardware
20775	1	Commercial Angle Frame Guide	20764	1	Angle Frame Bolt Bag
20785	1	Commercial A-Frame Bolt Bag			
A-Frame Kit – 27255					
20703-1	1	Commercial A-Frame w/ Hardware	27237	1	Angle Frame – MC w/ Hardware
20775	1	Commercial Angle Frame Guide	20764	1	Angle Frame Bolt Bag
20785	1	Commercial A-Frame Bolt Bag			

8445
8446-1
27255

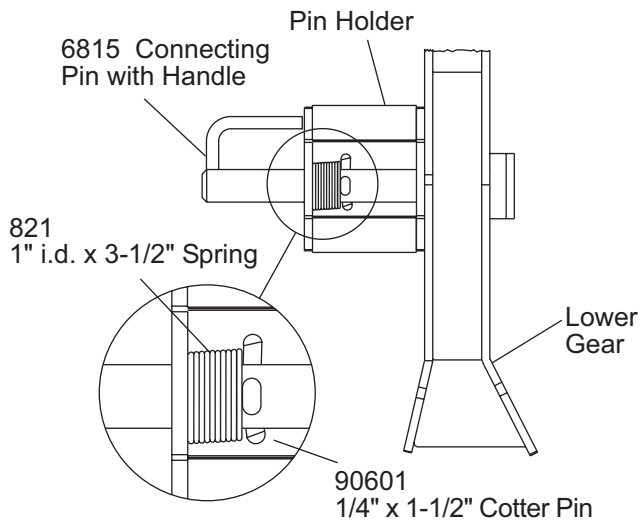


** Packed in
 20703-1 A-Frame Kit

Bolt Bag - 20786

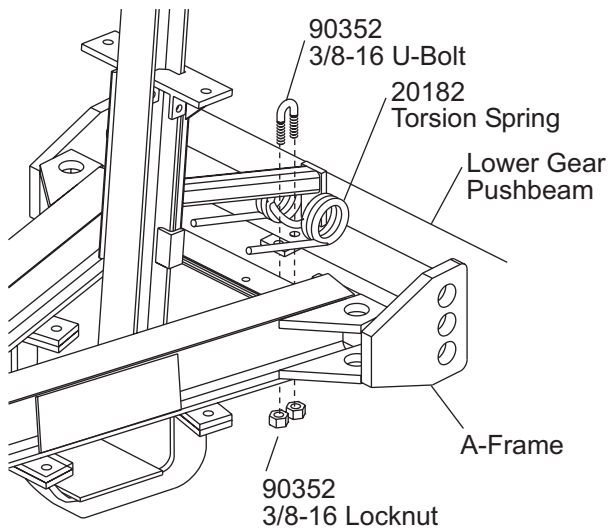
Ref #	Part #	Qty	Description	Ref #	Part #	Qty	Description
-	6815	2	Connecting Pin w/Handle	-	90361	5	3/8" Split Lock Washer
-	5150	2	1-1/4" x 5" Anchor Pin	-	90334	6	3/8-16 Hex Nut
-	90658	3	5/32" x 1-1/4" Cotter Pin	1	90210	5	1/2-13 x 1-1/2" Hex Cap Screw Steel G5 ZYC
-	90601	2	1/4" x 1-1/2" Cotter Pin	2	90572	5	1/2" Gr. 8 Flat Washer
-	90013	2	1/4" x 2" Cotter Pin	3	90575	7	1/2-13 x 1-1/4" Hex Cap Screw Steel G5 ZYC
-	8173	1	Jack Handle	4	90364	7	1/2" Split Lock Washer
-	7794	1	Spring - 1/2" o.d. x 2"	5	90337	7	1/2-13 Hex Nut
-	821	2	Spring - 1" i.d. x 3-1/2"	-	90352	2	3/8-16 PT Hex Locknut
-	90453	2	3/8 - 16 U-Bolt RD Bend Gr. 5	-	4289K	2	3/4 x 1-7/8" Machine Pin

Connecting Pin Assembly - 6920K



Connecting Pin Assembly Kit – 6920K			
Ref #	Part #	Qty	Description
-	6815	2	Connecting Pin w/ Handle
-	821	2	1" i.d. x 3-1/2" Spring
-	90601	2	1/4" x 1-1/2" Cotter Pin

Torsion Spring Kit - 20185

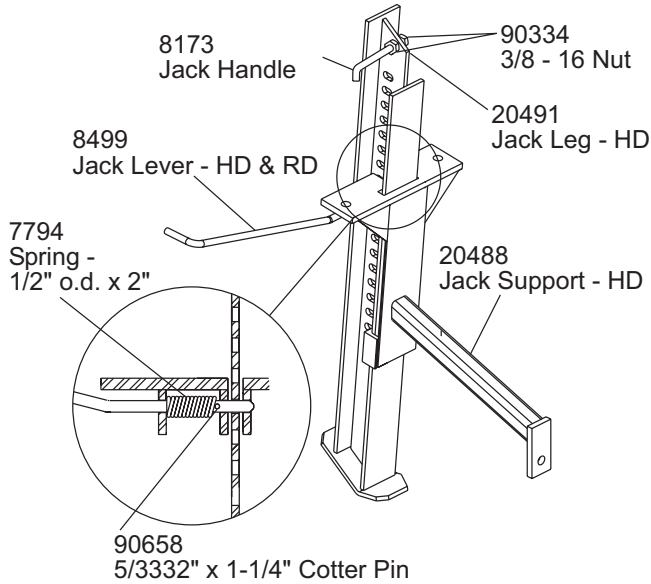


Torsion Spring Kit – 20185			
Ref #	Part #	Qty	Description
-	20182	1	Torsion Spring
-	*	1	3/8-16 U-Bolt
-	90352	2	3/8-16 Locknut
ns	20183	1	Tab
ns	*	1	Gusset

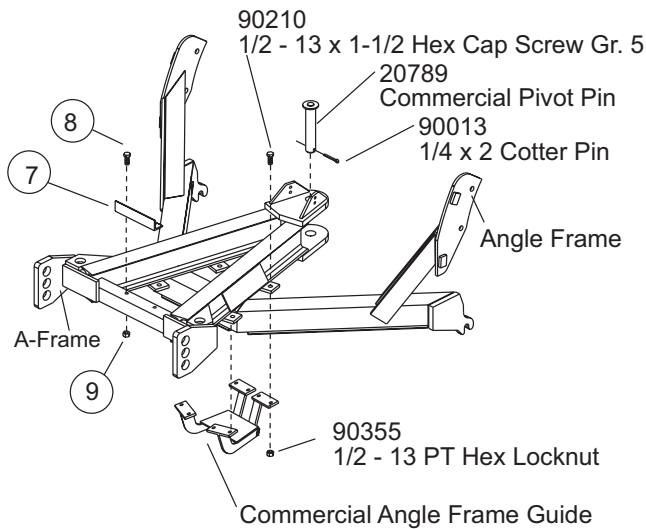
• available as part of service kit only
ns = not shown

8445
8446-1
27255

Jack Support



A-Frame to Angle Frame



U-Bolt Assembly – A6148K

Ref #	Part #	Qty	Description
-	90453	1	3/8-16 U-Bolt Gr. 5
-	90361	2	3/8" Lock Washer
-	90334	2	3/8-16 Nut

Bolt Bag – 20764

Ref #	Part #	Qty	Description
ns	5573	4	5/8-11 Locknut
ns	90127	4	5/8-11 x 1-1/2" Hex Cap Screw Steel G5 ZYC
ns = not shown			

Bolt Bag – 20785

Ref #	Part #	Qty	Description
-	20789	1	Commercial Pivot Pin
ns	90326	1	3/4 Flat Washer
-	90013	1	1/4 x 2 Cotter Pin
-	90210	8	1/2 - 13 x 1-1/2" Hex Cap Screw Steel G5 ZYC
-	90355	8	1/2 - 13 PT Hex Locknut
ns = not shown			

Torsion Spring Stop Kit – 20244

Ref #	Part #	Qty	Description
7	20184	1	Angle
8	90039	2	3/8-16 x 1 Hex Cap Screw Steel G5 ZYC
9	90334	2	3/8-16 Hex Nut
ns	90361	2	3/8 Split Lock Washer
ns = not shown			

Copyright © 2002 Douglas Dynamics. L.L.C. All rights reserved. This material may not be reproduced or copied, in whole or in part, in any printed, mechanical, electronic, film or other distribution and storage media, without the written consent of Fisher Engineering. Authorization to photocopy items for internal or personal use by Fisher Engineering outlets is granted.

Fisher Engineering reserves the right under its product improvement policy to change construction or design details and furnish equipment when so altered without reference to illustrations or specifications used herein. Fisher Engineering and the vehicle manufacturer may require and/or recommend optional equipment for snow removal. Fisher Engineering offers a limited warranty for all snowplows and accessories. See separately printed page for this important information. The following are registered (®) trademarks of Douglas Dynamics, L.L.C.: FISHER®, Minute Mount®

Printed in USA